

Supplementary Online Content

Friedman DJ, Parzynski CS, Varosy PD, et al. Trends and in-hospital outcomes associated with adoption of the subcutaneous implantable cardioverter defibrillator in the United States. *JAMA Cardiol*. Published online September 7, 2016. doi:10.1001/jamacardio.2016.2782.

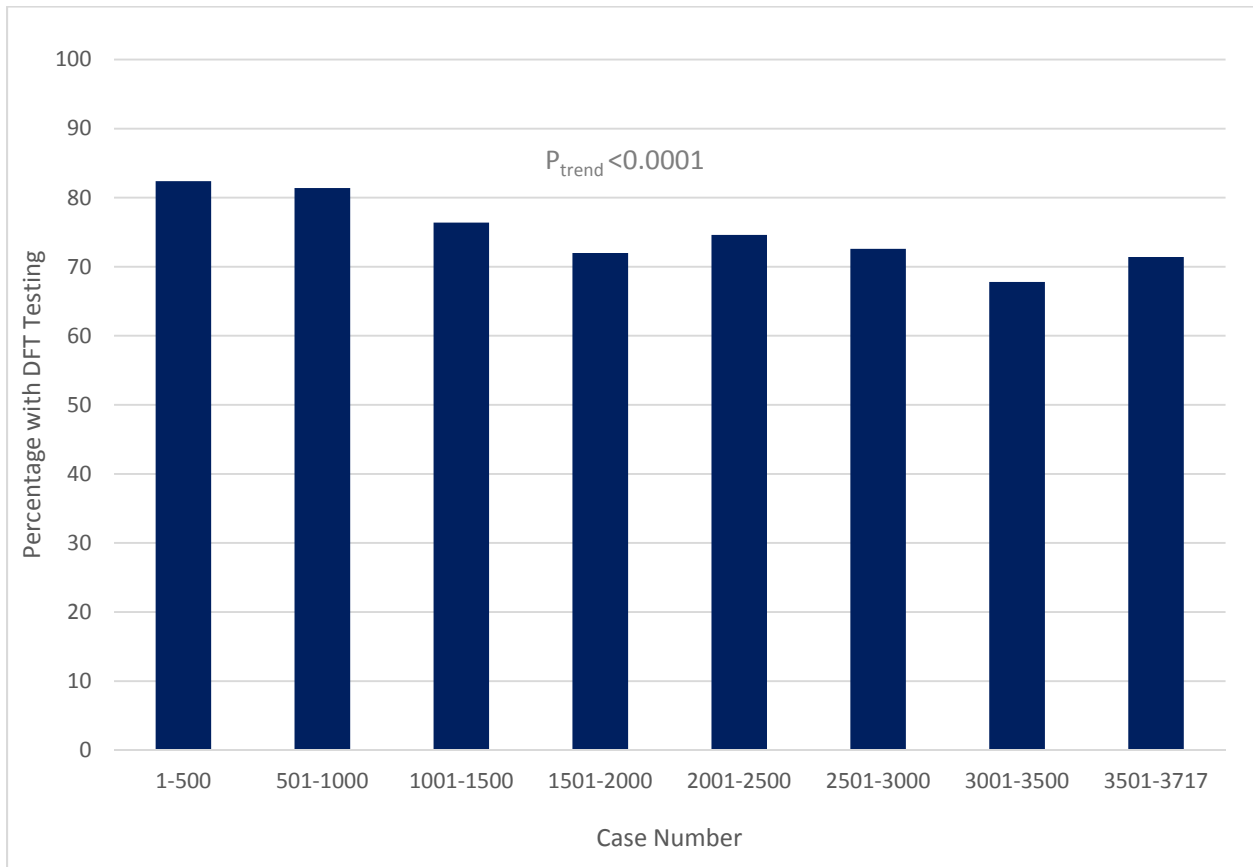
eFigure 1. Use of DFT Over Time

eFigure 2. Propensity Scores for Receiving S-ICD, SC-ICD, and DC-ICD

eTable. Patient, Hospital, and Physician Characteristics of the Unmatched Cohorts

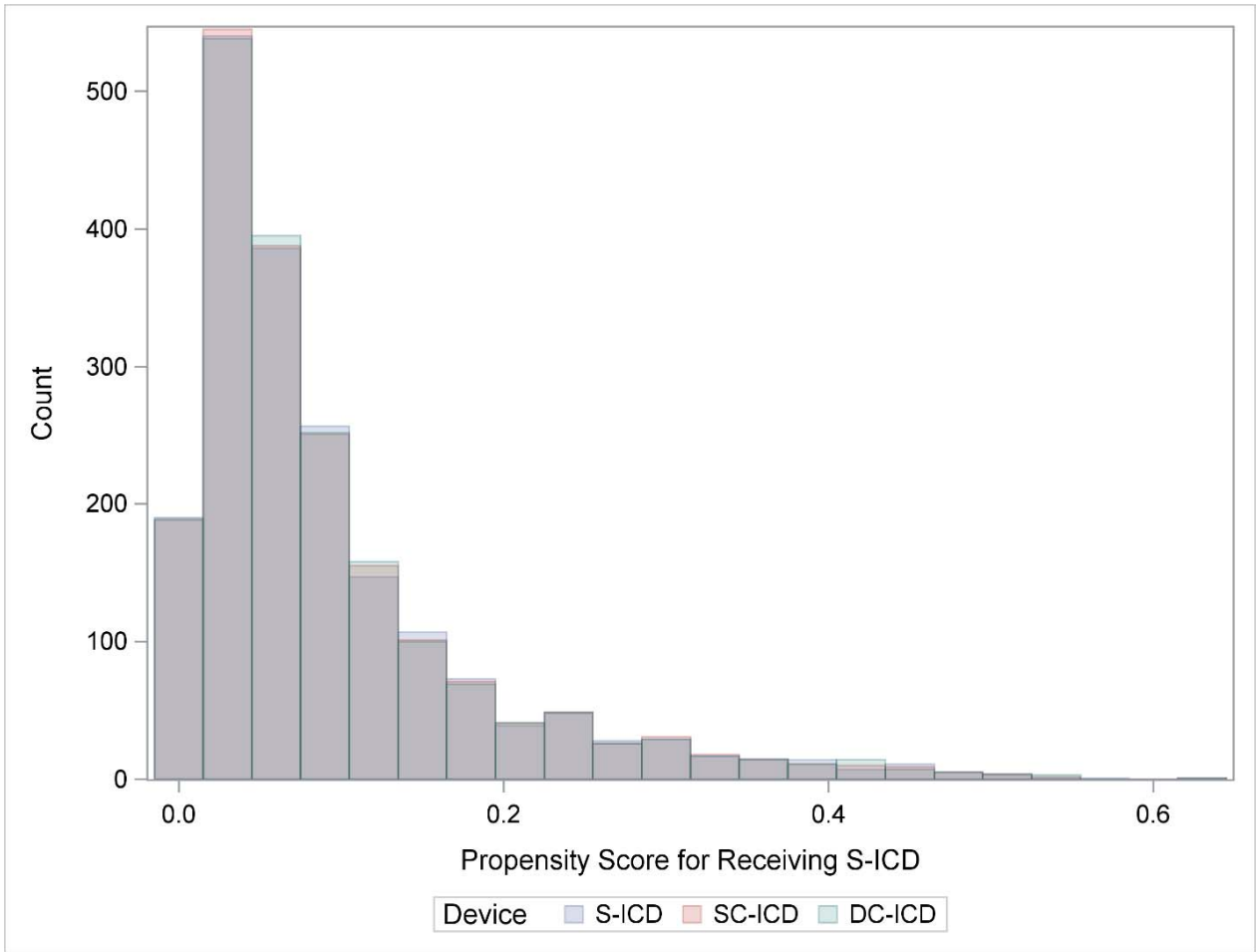
This supplementary material has been provided by the authors to give readers additional information about their work.

eFigure 1. Use of DFT Over Time

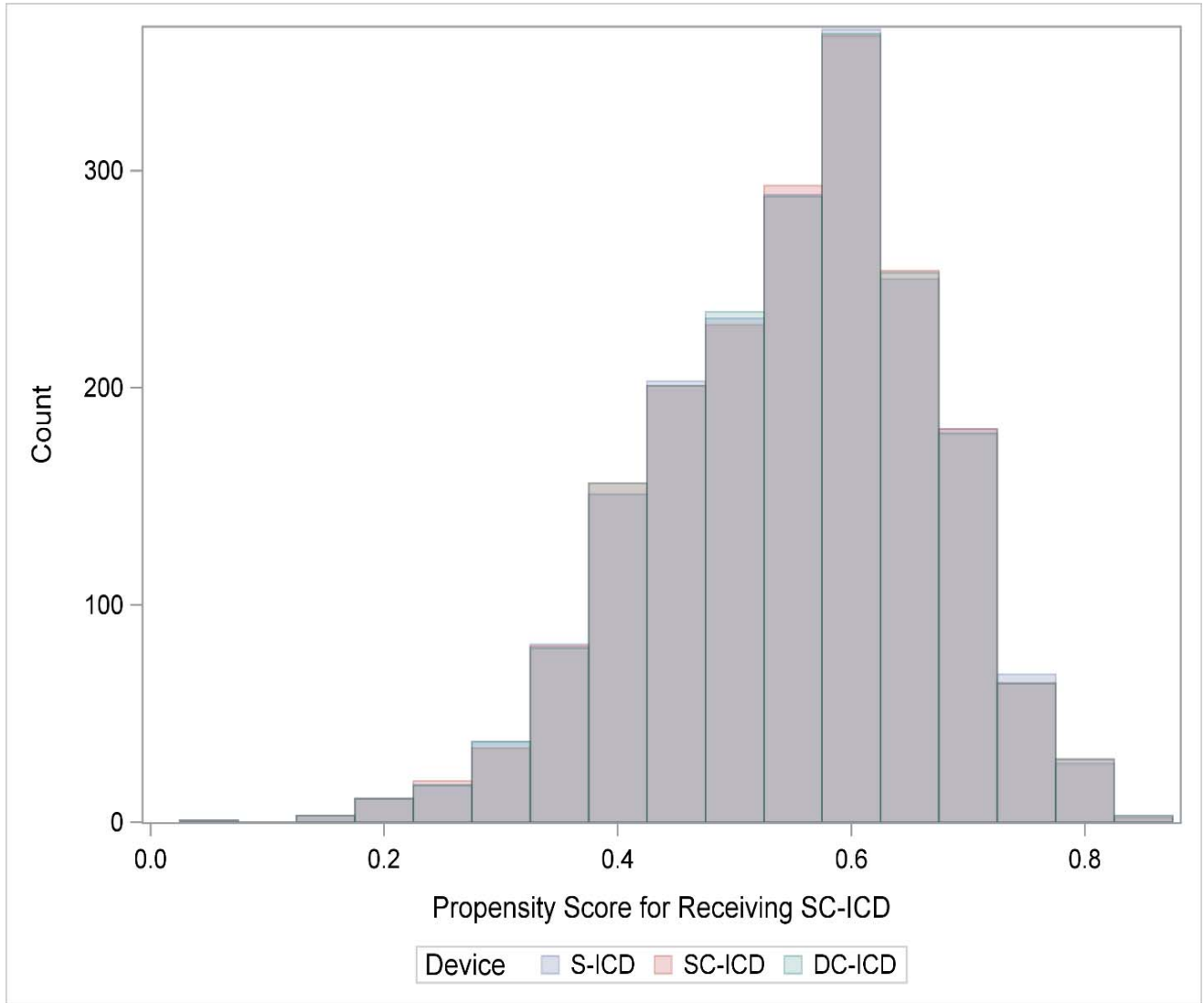


eFigure 2. Propensity Scores for Receiving S-ICD, SC-ICD, and DC-ICD

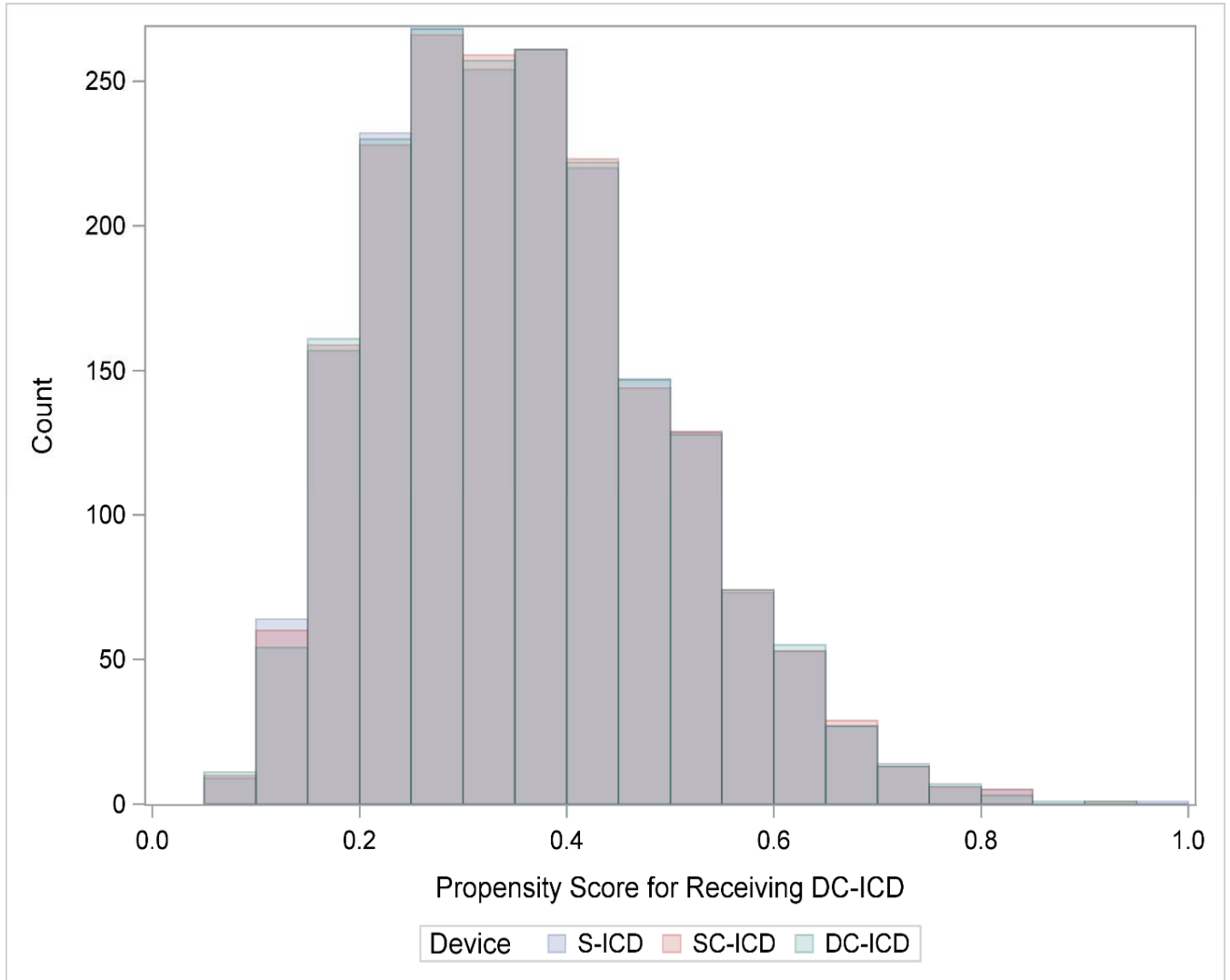
eFigure 2A. S-ICD



eFigure 2B. SC-ICD



eFigure 2C. DC-ICD



eTable. Patient, Hospital, and Physician Characteristics of the Unmatched Cohorts			
	S-ICD	SC-ICD	DC-ICD
Characteristic			
N	2,107	36,560	32,967
Age - Mean (SD)	53.2 (15.3)	59.9 (13.6)	63.9 (12.4)
Female	32.9	29.8	25.9
Race			
White non-Hispanic	63.4	67.9	75.8
Black non-Hispanic	26.9	22.8	15.4
Hispanic	6	6.1	6
Other	3.8	3.1	2.7
Insurance Payer (not mutually exclusive)			
Private	61.5	60.1	63.4
Medicare	44.3	47	56
Medicaid	20.2	17.4	13.1
Other	3.6	4.2	4.4
None	2.5	4	2.5
BMI - Mean (SD), km/m ²	29.8 (6.8)	30 (7.0)	29.5 (6.5)
QRS Duration, ms - Mean (SD)	99.6 (15.2)	100 (14.7)	102.5 (16.9)
PR Interval, ms - Mean (SD)	171.8 (31.6)	172.3 (30.7)	178.6 (35.9)
Non-Ischemic Dilated Cardiomyopathy	44.3	40.1	32
Ischemic Heart Disease	45.1	56.2	61.4
Atrial Fibrillation / Flutter	16.9	20.8	27.3
Ventricular Tachycardia	20	18.9	28.1
Preoperative Warfarin			
Not on warfarin	82.7	80	81
On warfarin - Not held	4.7	5.1	4.7
On warfarin - Held	12.7	14.9	14.3
NYHA Class			
I	22.3	15.3	17.8
II	47.7	52.3	47.6
III	29.3	31.7	33.8
IV	0.6	0.7	0.8
Previous PCI	29.9	36.5	39.8
Previous CABG	16.7	22.2	28.1
Diabetes	36.8	38.5	36.5
Previous MI	40.8	50.7	54.6

Structural Abnormalities			
Amyloidosis	0	0.1	0.2
Ebsteins anomaly	0.1	0	0
Transpositon of the Great Vessels	0.3	0	0.1
Giant Cell Myocarditis	0	0	0
Left Ventricular non-compaction	1.1	0.4	0.2
Tetrology of Fallot	0.3	0.1	0.2
Hypertrophic cardiomyopathy	6.4	2.6	4.8
Arrhythmogenic Right Ventricular Dysplasia	0.6	0.3	0.2
Common Ventricle	0.1	0	0
Syndromes Associated with Sudden Cardiac Death			
None	93	95.7	94.3
Long QT Syndrome	3.3	1.5	2.3
Short QT Syndrome	0	0	0.1
Brugada Syndrome	1	0.6	0.3
Catecholeminergic Polymorphic VT	0	0.1	0
Idiopathic VF	0.9	0.8	1
Other	1.7	1.2	2
Chronic Lung Disease	15.5	19.1	19.5
Cerebrovascular Disease	11.4	12.6	13.9
Cardiac Arrest	9.5	6.1	6.3
Hypertension	71.8	78	80
Syncope	14.2	10.5	15.6
CHF Duration > 9 months	50.7	52.2	49.8
EF % - Mean (SD)	31.2 (13.7)	28.4 (10.7)	31.3 (12.3)
Glomerular Filtration Rate, ml/min/1.73m ²			
≥60	62.6	68.9	65.4
30-59	16.2	25.1	29.1
15-29	3.1	2.9	3.1
<15 including those on dialysis	18.1	3.1	2.3
BUN, mg/dl			
≤20	57.9	62.2	60
20-40	29.7	32.1	34.7
>40	12.4	5.7	5.3
Sodium Level, mEq/L			
≤135	12.7	11.5	10
135-145	86.7	87.3	88.5
>145	0.6	1.2	1.5

Systolic BP, mmHg			
≤100	9.9	7.2	6
100-130	48.5	46.7	43.3
>130	41.6	46	50.7
Operator Training			
Board Certified or Eligible EP	78.2	69.5	67.1
Surgeon	0.6	0.9	1.2
Other	18.2	22.5	24
None	2.7	6.3	6.7
Unknown	0.4	0.9	1.1
Region			
New England	5	5	2.3
Atlantic	44.3	40.1	34.2
Central	36.3	42.8	48
Mountain	3.5	3.1	4.6
Pacific	10.7	8.2	8.9
Other	0	0	0
Teaching hospital Status			
COTH	49.1	33.1	24.4
Teaching	23.6	28	30.2
Not-teaching	27.1	38	43.5
Unknown	0.2	0.9	1.9
Beds up and staffed			
Unknown	0.2	0.9	1.9
≤100	1.8	3	4
100-500	49.3	58.5	61.2
>500	48.7	37.7	32.8
Implant Year			
2012	1.5	8.3	9.8
2013	9.3	39.2	40.6
2014	68	42.1	39.8
2015	21.2	10.4	9.7
CABG and PCI Capable	93.1	85.8	83.9
PCI Capable	1.5	5	4.1
BMI = body mass index, CABG = coronary artery bypass grafting, BUN = blood urea nitrogen, CHF = congestive heart failure, COTH = Counsel of Teaching Hospitals, ICD = implantable cardioverter defibrillator, EP = Electrophysiology, INR = international normalized ratio, NYHA = New York Heart Association, MI = myocardial infarction, PCI = percutaneous coronary intervention, SD = standard deviation, VF = ventricular fibrillation, VT = ventricular tachycardia			