

Supplementary Online Content

Pokharel Y, Tang F, Jones PG, et al. Adoption of the 2013 American College of Cardiology/American Heart Association Cholesterol Management Guideline in cardiology practices nationwide. *JAMA Cardiol*. Published online March 1, 2017. doi:10.1001/jamacardio.2016.5922

eTable. Overall Use of Statin and Its Dose Intensity During Each Guideline Period

eFigure 1. Eligible Patients Not on Any Lipid-Lowering Therapy During Each Guideline Period

eFigure 2. Trends in the Use of Moderate-High Intensity Statin and Non-statin LLT in Patients ≥ 21 Years With ASCVD

eFigure 3. Trends in the Use of Moderate-High Intensity Statin and Non-statin LLT in Patients ≥ 21 Years With LDL-C ≥ 190 mg/dL

eFigure 4. Trends in the Use of Moderate-High Intensity Statin and Non-statin LLT in 40-75 Years Old Diabetic Patients With LDL-C 70-189 mg/dL and Without ASCVD

eFigure 5. Trends in the Use of Moderate-High Intensity Statin and Non-statin LLT in 40-75 Years Old Primary Prevention Cohort With 10 Year ASCVD Risk $\geq 7.5\%$ and LDL-C 70-189 mg/dL, and Without Diabetes

eFigure 6. Trends in the Use of Moderate-High Intensity Statin and Non-statin LLT in 40-75 Years Old Primary Prevention Cohort With 10 Year FRS $\geq 10\%$ and LDL-C ≥ 130 mg/dL or 10 Year FRS $< 10\%$ and LDL-C ≥ 160 mg/dL

eFigure 7. Overall Use of LLT During Each Guideline Period in the ATP III Primary Prevention Cohort

This supplementary material has been provided by the authors to give readers additional information about their work.

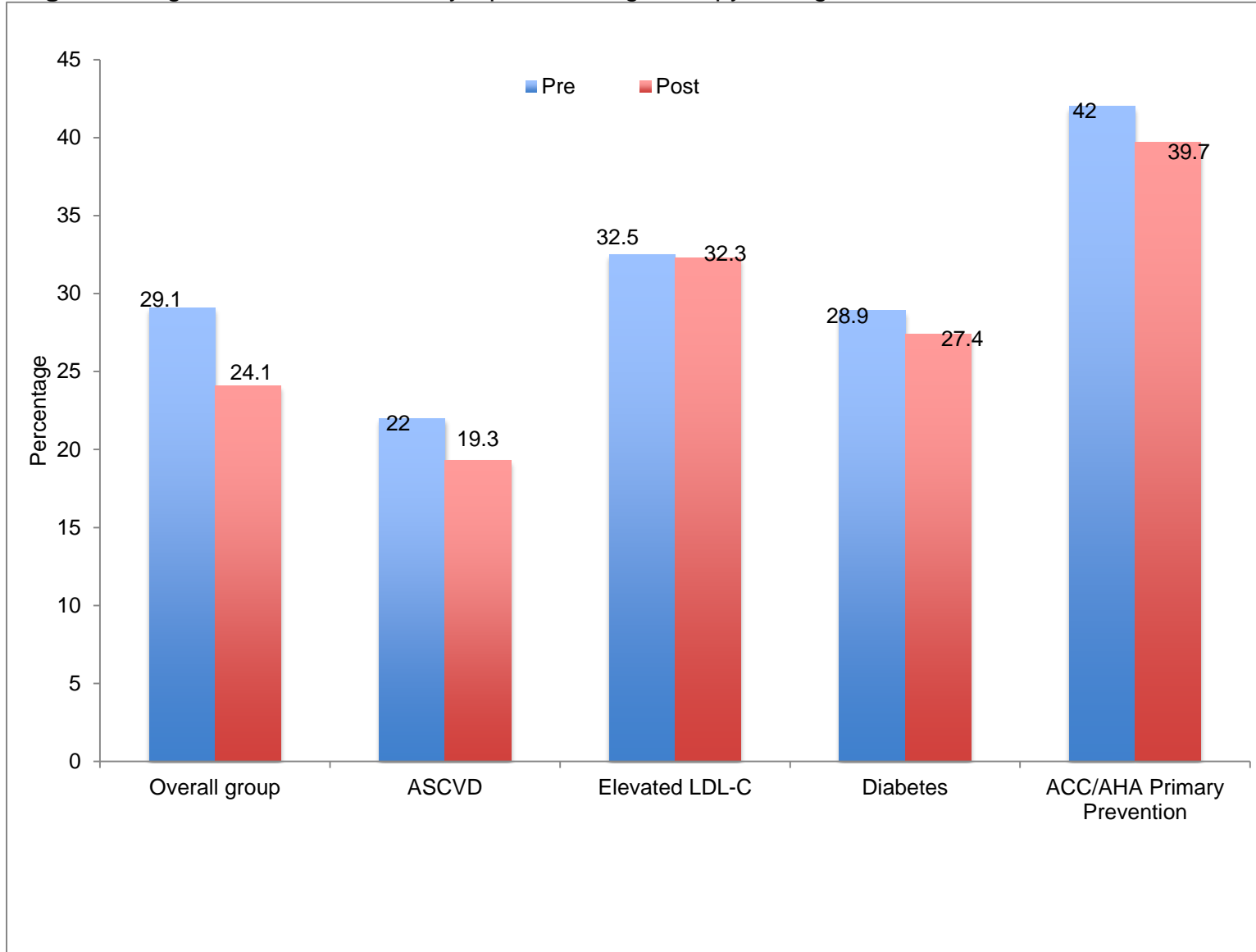
eTable. Overall Use of Statin and Its Dose Intensity During Each Guideline Period

Cohorts	Statin therapy (%)									
	Any intensity statin		Low intensity statin		Moderate intensity statin		High intensity statin		Statin dose unknown	
	Pre	Post	Pre	Post	Pre	Post	Pre	Post	Pre	Post
Overall group	70.9	75.9	7.2	7.7	39.0	39.1	23.1	27.5	1.6	1.6
ASCVD	71.4	76.2	7.1	7.7	39.2	39.2	23.5	27.8	1.6	1.6
Elevated LDL-C	59.2	60.9	7.5	6.9	32.6	31.0	18.0	21.3	1.0	1.7
Diabetes	63.8	67.0	10.5	10.3	38.4	38.0	14.0	17.2	1.0	1.5
ACC/AHA primary prevention	51.2	55.1	8.9	7.3	32.1	35.2	9.8	11.7	0.5	0.9
Without heart failure^a	50.8	55.2	8.7	7.2	31.8	35.7	9.7	11.3	0.5	1.0

^aAmong patients from the ACC/AHA primary prevention group

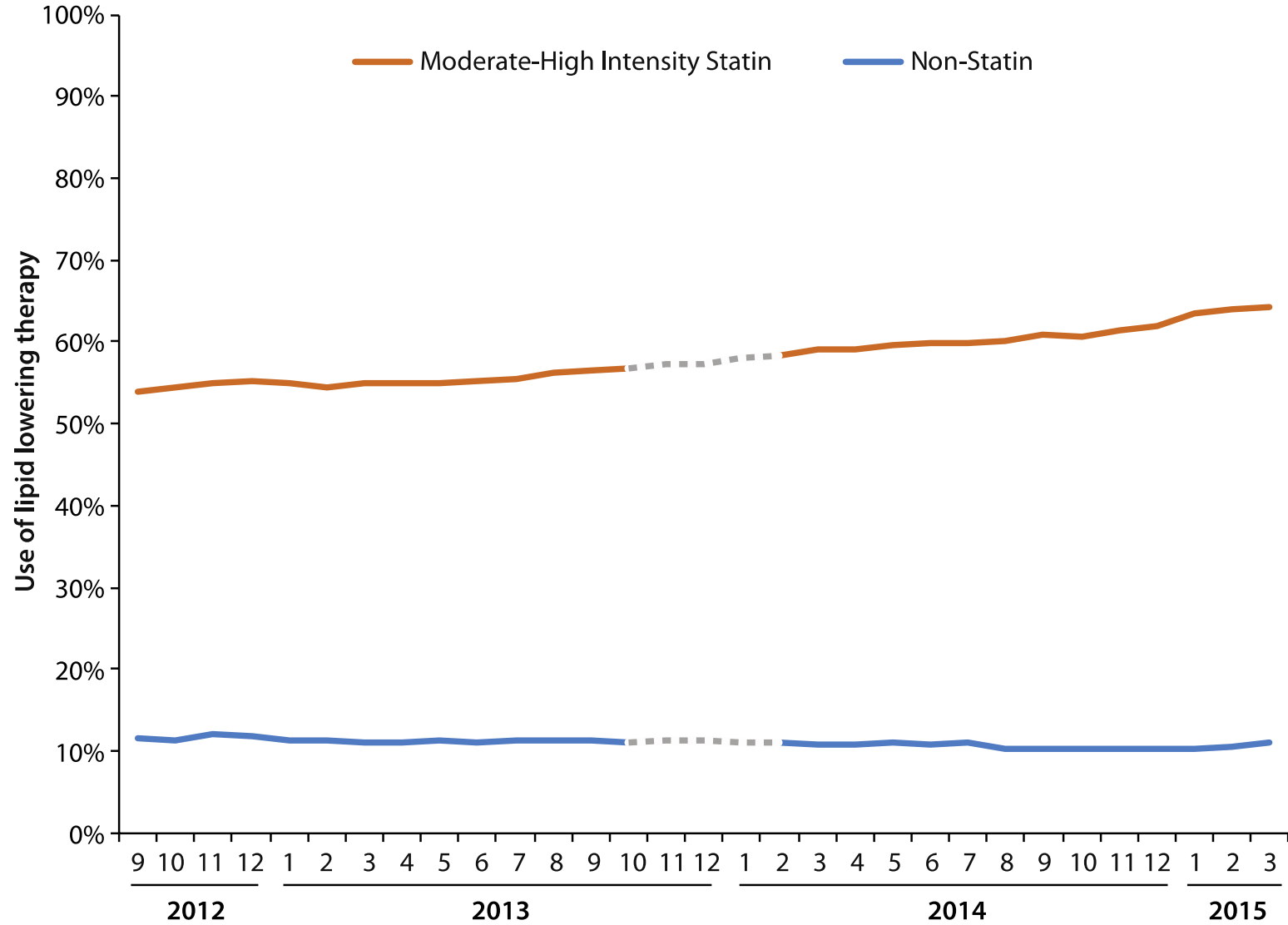
ACC/AHA = American College of Cardiology/American Heart Association, ASCVD = atherosclerotic cardiovascular disease, LDL-C = low-density lipoprotein cholesterol, LLT = lipid lowering therapy

eFigure 1. Eligible Patients Not on Any Lipid-Lowering Therapy During Each Guideline Period



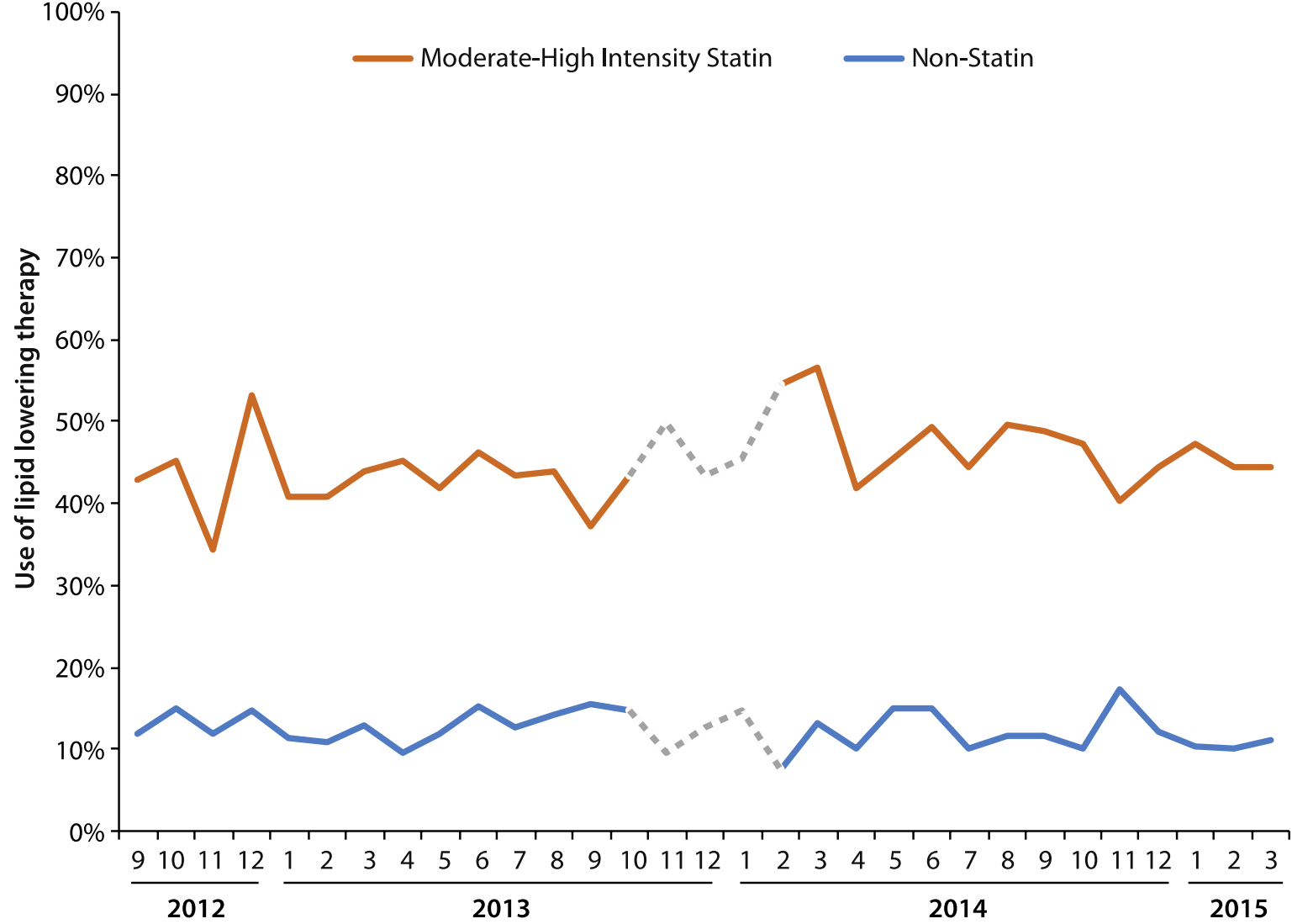
ACC/AHA = American College of Cardiology/American Heart Association, ASCVD = atherosclerotic cardiovascular disease, LDL-C = low-density lipoprotein cholesterol

eFigure 2. Trends in the Use of Moderate-High Intensity Statin and Non-statin LLT in Patients ≥21 Years With ASCVD



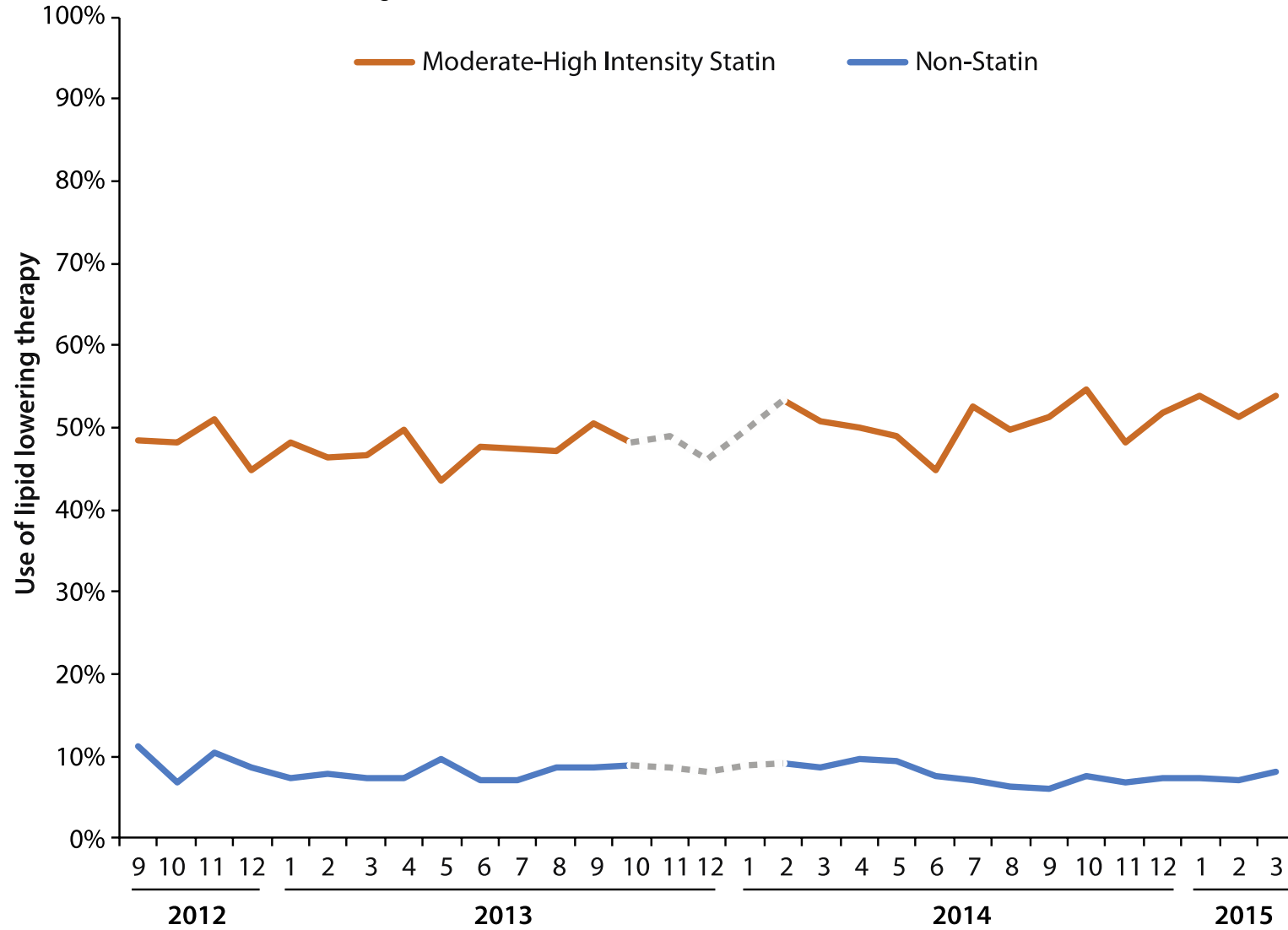
Dashed line reflects transition period. Patient encounters before and after ACC/AHA guidelines were 2,369,562 and 2,331,640, respectively
 ASCVD = atherosclerotic cardiovascular disease, LLT = lipid lowering therapy

eFigure 3. Trends in the Use of Moderate-High Intensity Statin and Non-statin LLT in Patients ≥ 21 Years With LDL-C ≥ 190 mg/dL



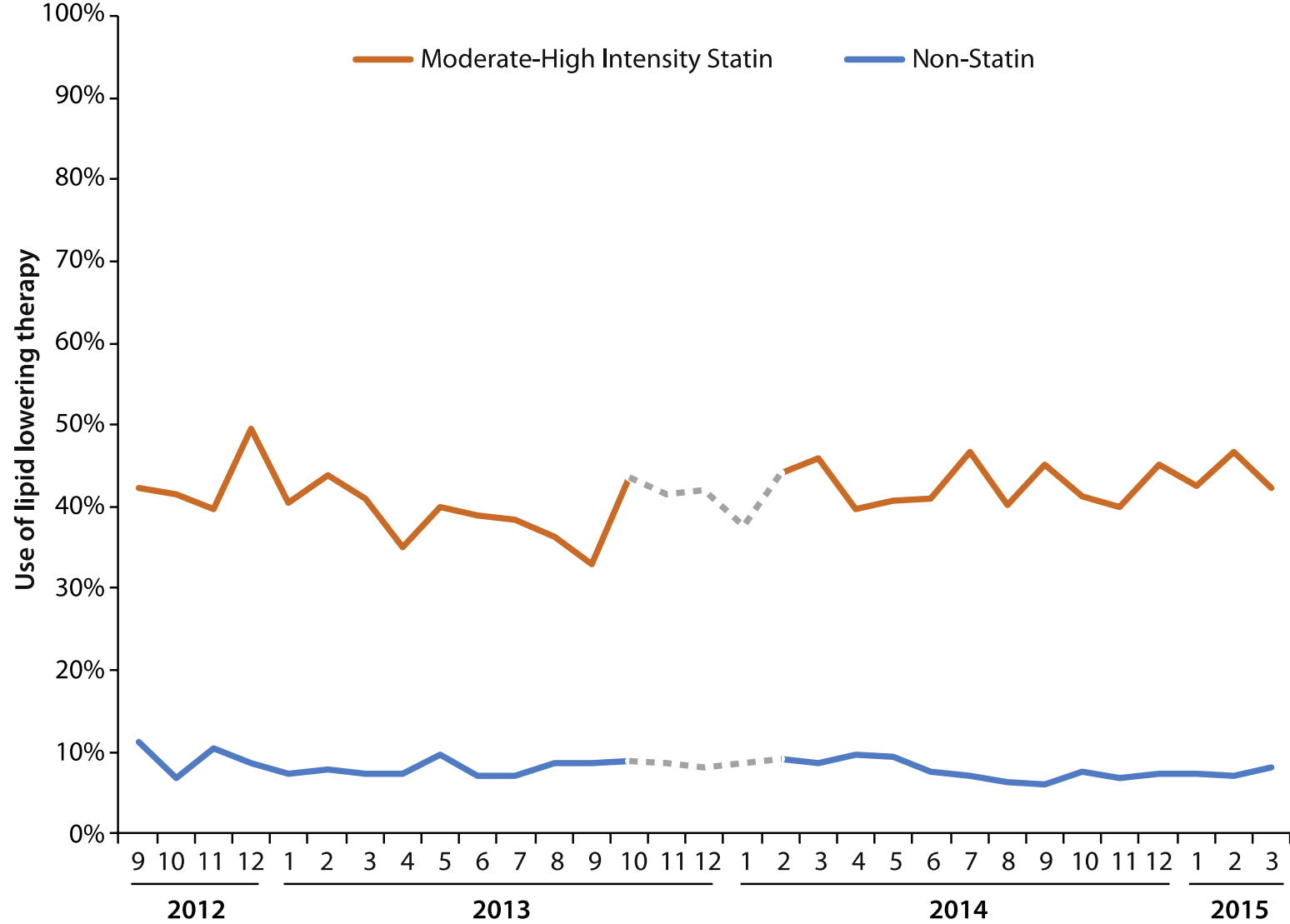
Dashed line reflects transition period. Patient encounters before and after ACC/AHA guidelines were 4,830 and 4,260, respectively
 LDL-C = low-density lipoprotein cholesterol, LLT = lipid lowering therapy

eFigure 4. Trends in the Use of Moderate-High Intensity Statin and Non-statin LLT in 40-75 Years Old Diabetic Patients With LDL-C 70-189 mg/dL and Without ASCVD



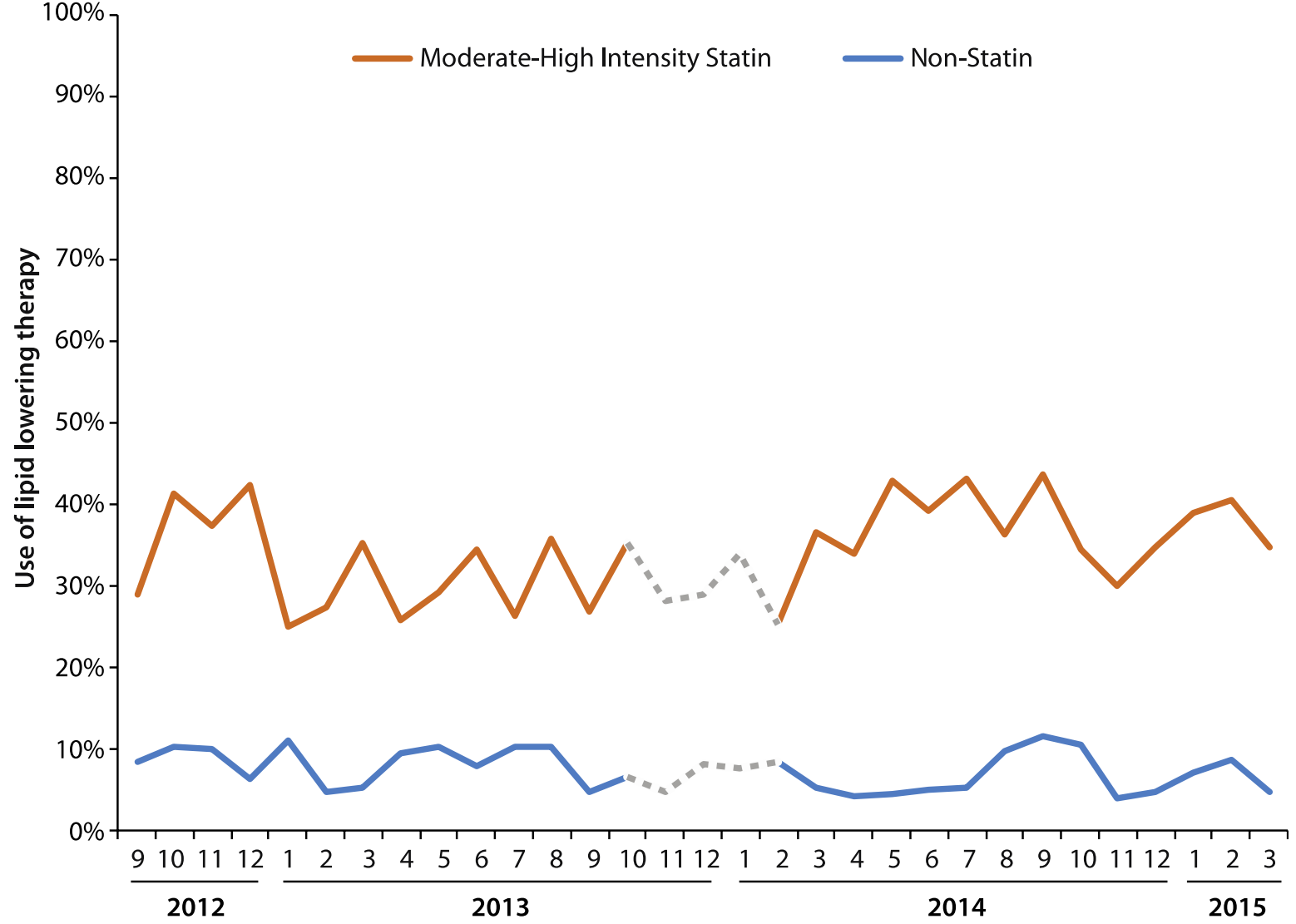
Dashed line reflects transition period. Patient encounters before and after ACC/AHA guidelines were 27,511 and 21,387, respectively
 ASCVD = atherosclerotic cardiovascular disease, LDL-C = low-density lipoprotein cholesterol, LLT = lipid lowering therapy

eFigure 5. Trends in the Use of Moderate-High Intensity Statin and Non-statin LLT in 40-75 Years Old Primary Prevention Cohort With 10 Year ASCVD Risk $\geq 7.5\%$ and LDL-C 70-189 mg/dL, and Without Diabetes



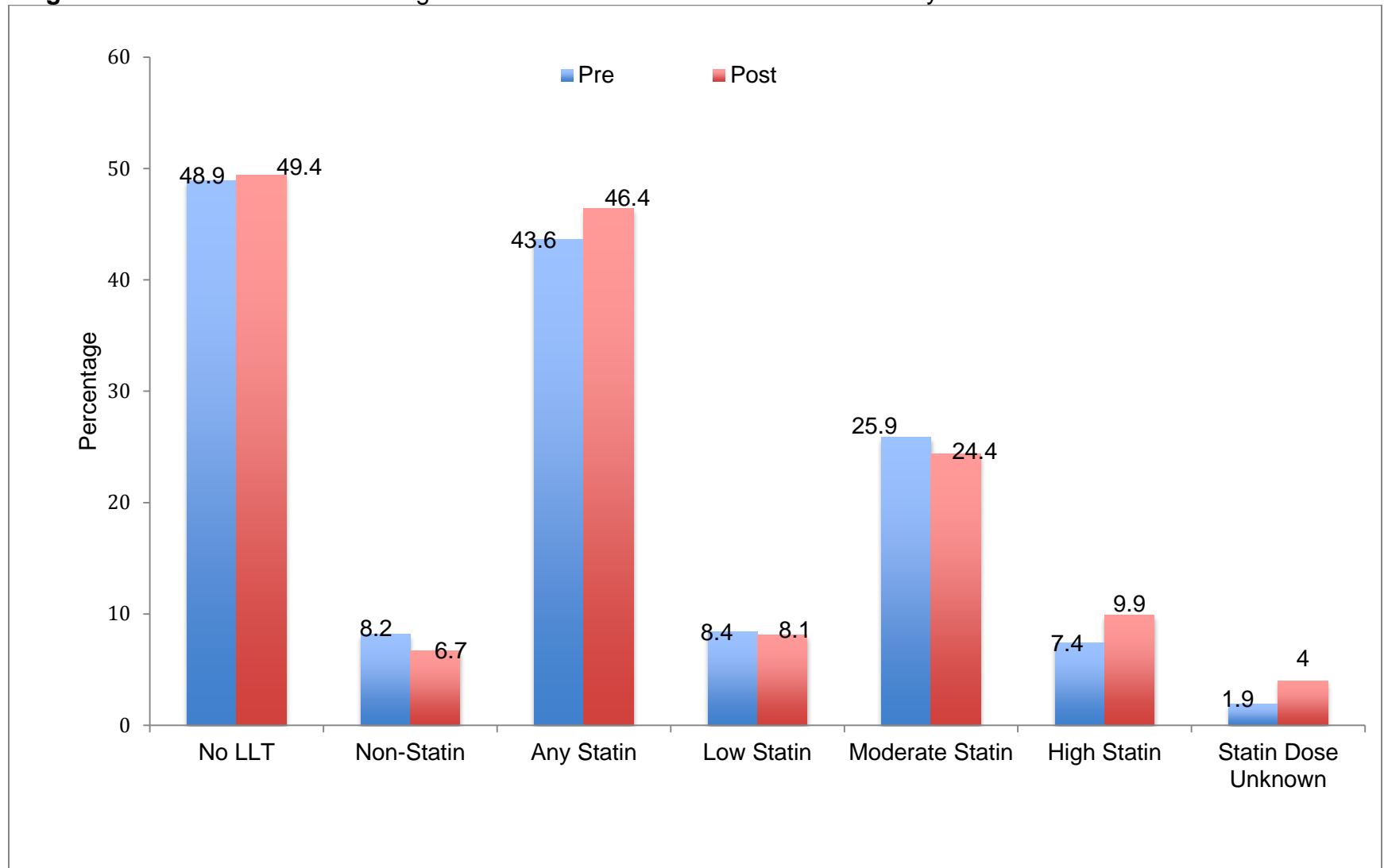
Dashed line reflects transition period. Patient encounters before and after ACC/AHA guidelines were 26,163 and 16,880, respectively
 ASCVD = atherosclerotic cardiovascular disease, LDL-C = low-density lipoprotein cholesterol, LLT = lipid lowering therapy

eFigure 6. Trends in the Use of Moderate-High Intensity Statin and Non-statin LLT in 40-75 Years Old Primary Prevention Cohort With 10 Year FRS $\geq 10\%$ and LDL-C ≥ 130 mg/dL or 10 Year FRS $< 10\%$ and LDL-C ≥ 160 mg/dL



Dashed line reflects transition period. Patient encounters before and after ACC/AHA guidelines were 4,599 and 3,949, respectively
 FRS = Framingham's risk score, LDL-C = low-density lipoprotein cholesterol, LLT = lipid lowering therapy

eFigure 7. Overall Use of LLT During Each Guideline Period in the ATP III Primary Prevention Cohort



ATP III = Third Adult Treatment Panel for the Detection Evaluation and Treatment of High Blood Cholesterol in Adults, LLT = lipid lowering therapy