

Supplementary Online Content

Navar AM, Wang TY, Mi X, et al. Influence of cardiovascular risk communication tools and presentation formats on patient perceptions and preferences. *JAMA Cardiol*. Published online November 7, 2018. doi:10.1001/jamacardio.2018.3680

eFigure 1. Survey Study Design and Participation Rates

eFigure 2. Screenshots of risk scenario questions

eTable 1. Characteristics of patients randomized to pictogram, bar graph, and text only

eTable 2. Question-specific response rates

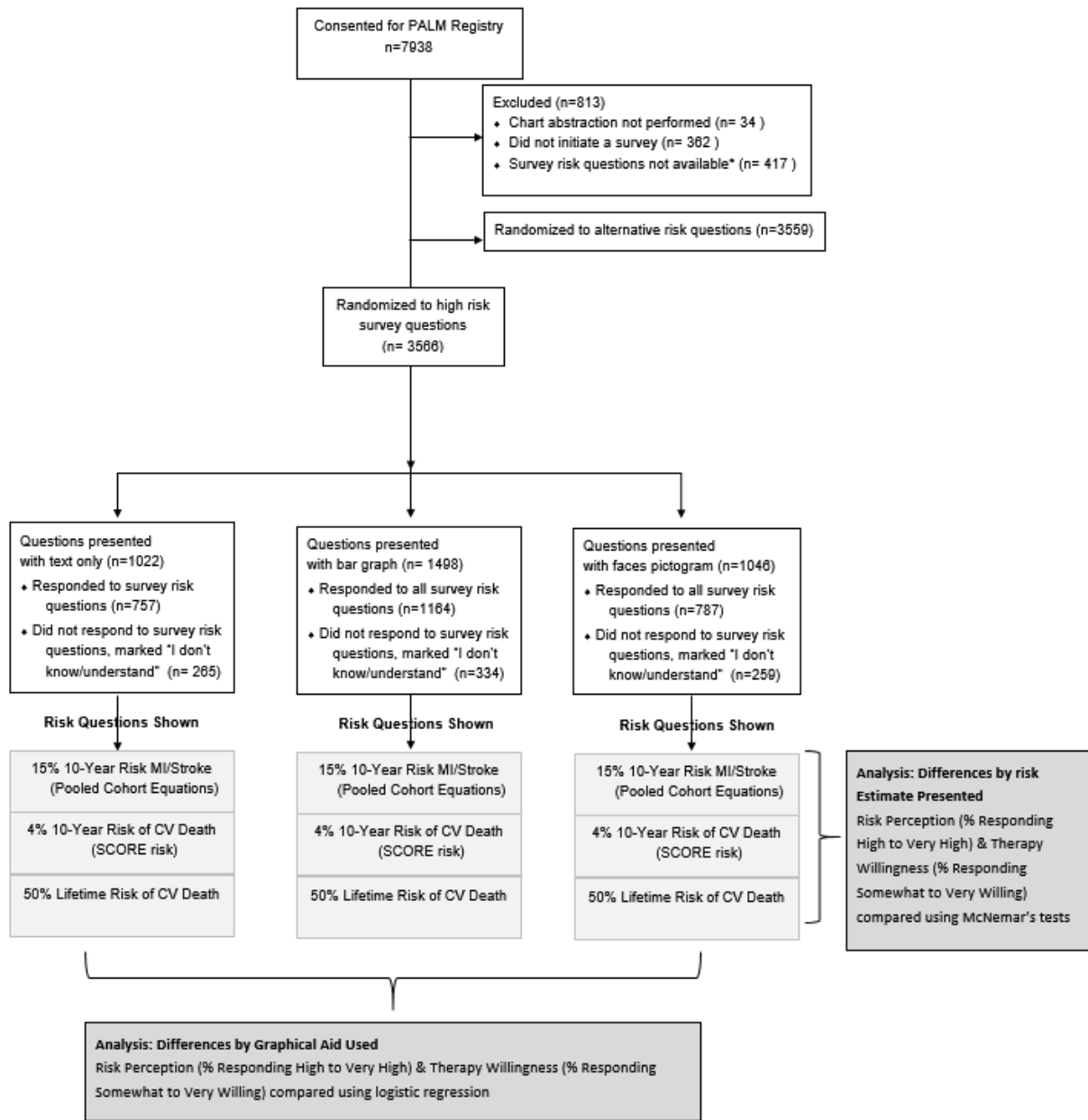
eTable 3. Characteristics of Responders vs. Non-Responders (Text Only) (N=1022)

eTable 4. Characteristics of Responders vs. Non-Responders (Bar Graph) (N=1498)

eTable 5. Characteristics of Responders vs. Non-Responders (Pictogram) (N=1046)

This supplementary material has been provided by the authors to give readers additional information about their work.

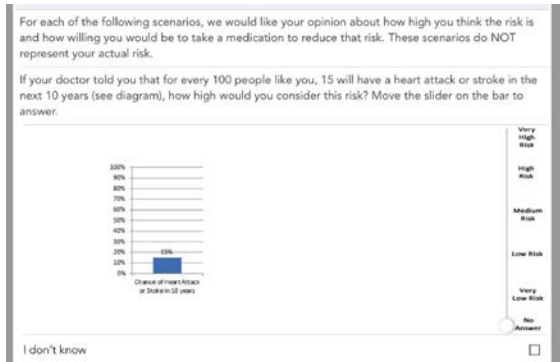
eFigure 1. Survey Study Design and Participation Rates



*Due to a technical problem with the initial survey programming, n=417 did not receive any risk questions. This affected the number of adults shown the text only and pictogram scenarios, but not the bar graph.

eFigure 2. Screenshots of risk scenario questions

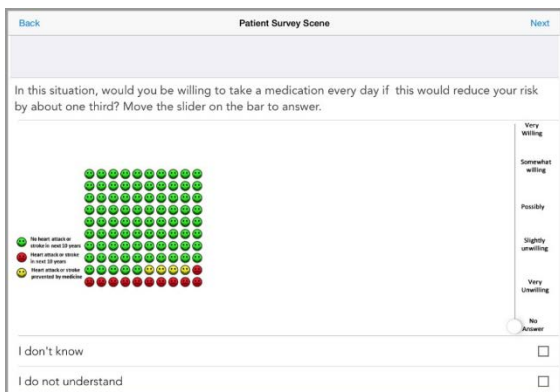
1a. Bar graph and question about perceived risk



1b. Bar graph showing risk reduction and question about therapy willingness



2. Pictogram showing risk reduction and question about therapy willingness



eTable 1. Characteristics of patients randomized to pictogram, bar graph, and text only

name	Pictogram	Bar Graph	Text Only	
Age (median, IQR)	67.0 (59.0-75.0)	68.0 (60.0-75.0)	67.0 (59.0-74.0)	0.7859
Numeracy score (median, IQR)	16.0 (11.0-21.0)	17.0 (12.0-21.0)	16.0 (12.0-21.0)	0.0227
Prior ASCVD (%)	464 (44.4%)	701 (46.8%)	469 (45.9%)	0.4782
Sex (% male)	553 (52.9%)	820 (54.7%)	558 (54.6%)	0.6111
Race				0.9192
White	892 (85.3%)	1,291 (86.2%)	877 (85.8%)	
Black	130 (12.4%)	169 (11.3%)	119 (11.6%)	
Other/unknown	24 (2.3%)	38 (2.5%)	26 (2.5%)	
Education				0.3756
Below college	380 (36.3%)	500 (33.4%)	368 (36.0%)	
College or above	651 (62.2%)	980 (65.4%)	637 (62.3%)	
Missing	15 (1.4%)	18 (1.2%)	17 (1.7%)	
Income				
<35,000	251 (24.0%)	334 (22.3%)	254 (24.9%)	0.1661
35,000-75,000	252 (24.1%)	345 (23.0%)	217 (21.2%)	
75,000-100,000	83 (7.9%)	130 (8.7%)	70 (6.8%)	
>=100,000	129 (12.3%)	226 (15.1%)	135 (13.2%)	
Missing/refused/don't know	331 (31.6%)	463 (30.9%)	346 (33.9%)	
Insurance				0.1813
Private	639 (61.1%)	953 (63.6%)	621 (60.8%)	
Medicare	307 (29.3%)	415 (27.7%)	315 (30.8%)	
Medicaid	43 (4.1%)	47 (3.1%)	28 (2.7%)	
No insurance	19 (1.8%)	31 (2.1%)	20 (2.0%)	
Others	19 (1.8%)	39 (2.6%)	20 (2.0%)	
Missing	19 (1.8%)	13 (0.9%)	18 (1.8%)	
Clinic type				0.0411
Cardiology	337 (32.2%)	563 (37.6%)	359 (35.1%)	
Primary care	431 (41.2%)	601 (40.1%)	419 (41.0%)	
Other	278 (26.6%)	334 (22.3%)	244 (23.9%)	
Survey Response Rate	787 (75.2%)	1,164 (77.7%)	757 (74.1%)	0.0913

P value for response rate: pictogram vs. bar graph $p=0.1481$, bar graph vs. text only $p=0.0355$, pictogram vs. text only $p=0.5413$ (Note: $\alpha=0.01$ used for significance).

eTable 2. Question-specific response rates

	Pictogram	Bar Graph	Text Only
Number Eligible	1046	1498	1022
Perceived Risk			
N responding (%)			
10-Year ASCVD Risk	n=924 (88.3%)	n=1316 (87.9%)	n=892 (87.3%)
10-Year CVD Death Risk	n=961 (91.9%)	n=1395 (93.1%)	n=924 (90.4%)
Lifetime Risk	n=983 (94.0%)	n=1414 (94.4%)	n=959 (93.8%)
Therapy Willingness			
N responding (%)			
10-Year ASCVD Risk	n=946 (90.4%)	n=1385 (92.5%)	n=921 (90.1%)
10-Year CVD Death Risk	n=979 (93.6%)	n=1411 (94.2%)	n=934 (91.4%)
Lifetime Risk	n=989 (94.6%)	n=1412 (94.3%)	n=962 (94.1%)

eTable 3. Characteristics of Responders vs. Non-Responders (TEXT ONLY) (N=1022)

name	Non-Responders (N=265)	Responders (N=757)	P-value
Age (median, IQR)	69.0 (61.0-76.0)	67.0 (59.0-74.0)	0.0114
Numeracy score (median, IQR)	14.0 (8.0-20.0)	16.0 (12.0-21.0)	<.0001
Prior ASCVD (%)	121 (45.7%)	348 (46.0%)	0.9304
Sex (% male)	134 (50.6%)	424 (56.0%)	0.1255
Race			0.0034
White	213 (80.4%)	664 (87.7%)	
Black	46 (17.4%)	73 (9.6%)	
Other/unknown	6 (2.3%)	20 (2.6%)	
Education			0.0050
Below college	114 (43.0%)	254 (33.6%)	
College or above	144 (54.3%)	493 (65.1%)	
Missing	7 (2.6%)	10 (1.3%)	
Income			0.0236
<35,000	76 (28.7%)	178 (23.5%)	
35,000-75,000	61 (23.0%)	156 (20.6%)	
75,000-100,000	11 (4.2%)	59 (7.8%)	
>=100,000	24 (9.1%)	111 (14.7%)	
Missing/refused/don't know	93 (35.1%)	253 (33.4%)	
Insurance			0.0670
Private	143 (54.0%)	478 (63.1%)	
Medicare	97 (36.6%)	218 (28.8%)	
Medicaid	10 (3.8%)	18 (2.4%)	
No insurance	4 (1.5%)	16 (2.1%)	
Others	4 (1.5%)	16 (2.1%)	
Missing	7 (2.6%)	11 (1.5%)	
Clinic type			0.2454
Cardiology	83 (31.3%)	276 (36.5%)	
Primary care	119 (44.9%)	300 (39.6%)	
Other	63 (23.8%)	181 (23.9%)	
Aspirin use (from RS)	131 (49.4%)	382 (50.5%)	0.7732
Statin use (From RS)	193 (72.8%)	543 (71.7%)	0.7315
BP medication use (From RS)	207 (78.1%)	585 (77.3%)	0.7795

*Responders = completed all 6 questions, non-responders = skipped at least 1 questions or put "I don't know".

eTable 4. Characteristics of Responders vs. Non-Responders (BAR GRAPH) (N=1498)

name	Non-Responders (N=334)	Responders (N=1164)	P-value
Age (median, IQR)	70.0 (62.0-76.0)	67.0 (59.0-74.0)	0.0003
Numeracy score (median, IQR)	16.0 (10.0-20.0)	17.0 (12.0-21.0)	0.0071
Prior ASCVD (%)	153 (45.8%)	548 (47.1%)	0.6816
Sex (% male)	169 (50.6%)	651 (55.9%)	0.0846
Race			0.0058
White	271 (81.1%)	1,020 (87.6%)	
Black	49 (14.7%)	120 (10.3%)	
Other/unknown	14 (4.2%)	24 (2.1%)	
Education			0.0001
Below college	121 (36.2%)	379 (32.6%)	
College or above	202 (60.5%)	778 (66.8%)	
Missing	11 (3.3%)	7 (0.6%)	
Income			0.5285
<35,000	74 (22.2%)	260 (22.3%)	
35,000-75,000	77 (23.1%)	268 (23.0%)	
75,000-100,000	22 (6.6%)	108 (9.3%)	
>=100,000	49 (14.7%)	177 (15.2%)	
Missing/refused/don't know	112 (33.5%)	351 (30.2%)	
Insurance			0.3778
Private	205 (61.4%)	748 (64.3%)	
Medicare	97 (29.0%)	318 (27.3%)	
Medicaid	10 (3.0%)	37 (3.2%)	
No insurance	6 (1.8%)	25 (2.1%)	
Others	10 (3.0%)	29 (2.5%)	
Missing	6 (1.8%)	7 (0.6%)	
Clinic type			0.0042
Cardiology	101 (30.2%)	462 (39.7%)	
Primary care	156 (46.7%)	445 (38.2%)	
Other	77 (23.1%)	257 (22.1%)	
Aspirin use (from RS)	154 (46.1%)	631 (54.2%)	0.0090
Statin use (From RS)	218 (65.3%)	887 (76.2%)	<.0001
BP medication use (From RS)	249 (74.6%)	893 (76.7%)	0.4120

*Responders = completed all 6 questions, non-responders = skipped at least 1 questions or put "I don't know".

eTable 5. Characteristics of Responders vs. Non-Responders (PICTOGRAM) (N=1046)

name	Non-Responders (N=259)	Responders (N=787)	P-value
Age (median, IQR)	69.0 (60.0-75.0)	67.0 (59.0-75.0)	0.1281
Numeracy score (median, IQR)	14.7 (10.0-20.0)	16.0 (12.0-21.0)	0.0244
Prior ASCVD (%)	111 (42.9%)	353 (44.9%)	0.5748
Sex (% male)	137 (52.9%)	416 (52.9%)	0.9918
Race			0.0628
White	210 (81.1%)	682 (86.7%)	
Black	43 (16.6%)	87 (11.1%)	
Other/unknown	6 (2.3%)	18 (2.3%)	
Education			0.3660
Below college	91 (35.1%)	289 (36.7%)	
College or above	162 (62.5%)	489 (62.1%)	
Missing	6 (2.3%)	9 (1.1%)	
Income			0.1811
<35,000	69 (26.6%)	182 (23.1%)	
35,000-75,000	69 (26.6%)	183 (23.3%)	
75,000-100,000	21 (8.1%)	62 (7.9%)	
>=100,000	34 (13.1%)	95 (12.1%)	
Missing/refused/don't know	66 (25.5%)	265 (33.7%)	
Insurance			0.1681
Private	150 (57.9%)	489 (62.1%)	
Medicare	85 (32.8%)	222 (28.2%)	
Medicaid	6 (2.3%)	37 (4.7%)	
No insurance	4 (1.5%)	15 (1.9%)	
Others	7 (2.7%)	12 (1.5%)	
Missing	7 (2.7%)	12 (1.5%)	
Clinic type			0.2571
Cardiology	79 (30.5%)	258 (32.8%)	
Primary care	101 (39.0%)	330 (41.9%)	
Other	79 (30.5%)	199 (25.3%)	
Aspirin use (from RS)	127 (49.0%)	394 (50.1%)	0.7739
Statin use (From RS)	189 (73.0%)	570 (72.4%)	0.8644
BP medication use (From RS)	214 (82.6%)	593 (75.3%)	0.0156

*Responders = completed all 6 questions, non-responders = skipped at least 1 questions or put "I don't know".