

Supplementary Online Content

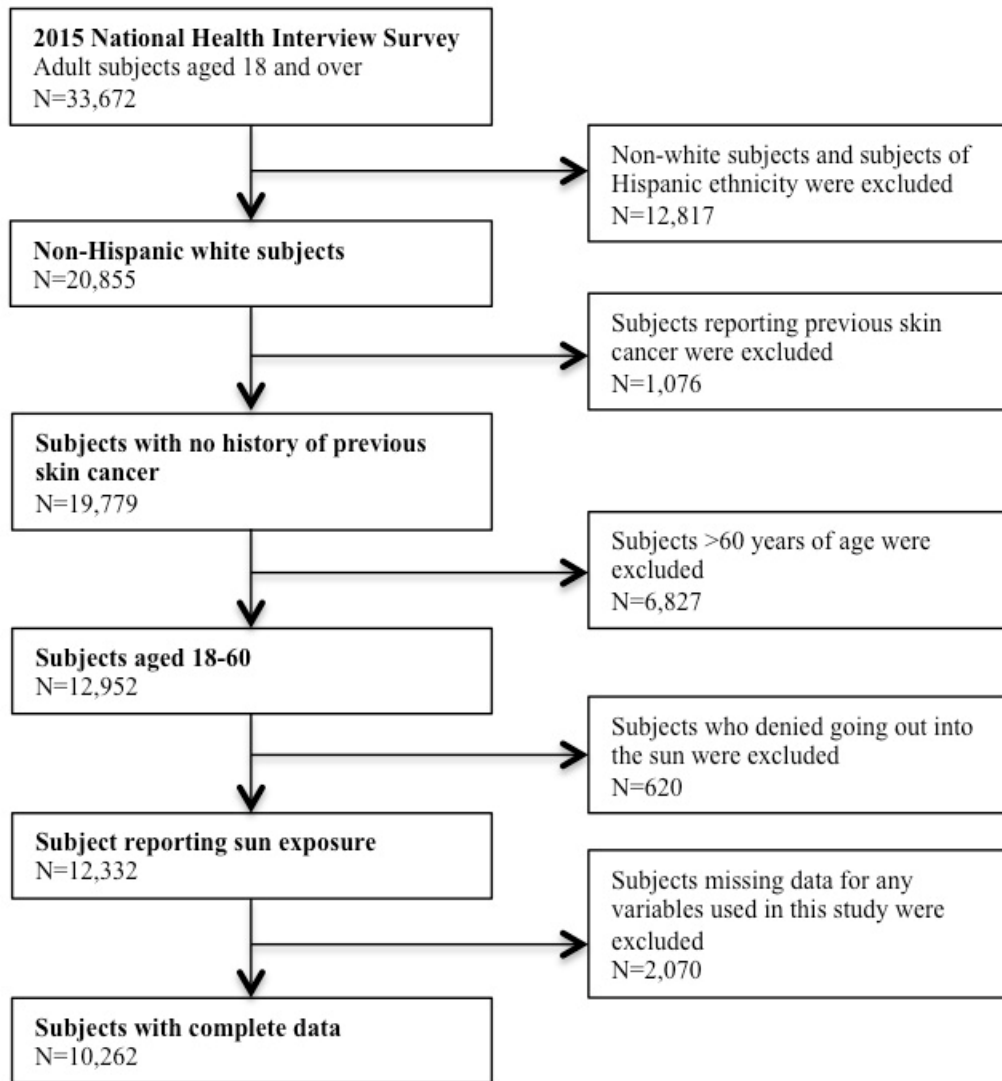
Fischer AH, Wang TS, Yenokyan G, Kang S, Chien AL. Association of indoor tanning frequency with risky sun protection practices and skin cancer screening. *JAMA Dermatol*. Published online October 12, 2016.
doi:10.1001/jamadermatol.2016.3754

eFigure. Inclusion and exclusion criteria of study subjects

eTable. Prevalence (wt %) and adjusted prevalence ratios (aPR) of rare/never use of photo-protection, multiple sunburns in the last year, and previous full-body skin examination, according to indoor tanning frequency in the last year

This supplementary material has been provided by the authors to give readers additional information about their work.

eFigure. Inclusion and exclusion criteria of study subjects



eTable. Prevalence (wt %) and adjusted prevalence ratios (aPR) of rare/never use of photoprotection, multiple sunburns in the last year, and previous full-body skin examination, according to indoor tanning frequency in the last year

	Indoor tanning frequency in the last year ^a			
	None	Moderate	Frequent	
	N=9475	N=393	N=394	
	Wt % (SE) ^b	Wt % (SE) ^b	Wt % (SE) ^b	
	aPR (95% CI) ^c	aPR (95% CI) ^c	aPR (95% CI) ^c	<i>P</i> trend ^d
Rarely/never use sunscreen ^e	33.2 (0.7)	31.8 (3.1)	39.8 (3.6)	
	1.00 (Reference)	1.02 (0.85-1.22)	1.24 (1.05-1.47)	.01
Rarely/never use protective clothing ^e	43.4 (0.8)	61.5 (3.6)	69.0 (3.4)	
	1.00 (Reference)	1.25 (1.11-1.41)	1.31 (1.18-1.45)	<.001
Rarely/never use shade ^e	27.3 (0.6)	37.4 (3.1)	46.1 (3.5)	
	1.00 (Reference)	1.28 (1.08-1.52)	1.53 (1.30-1.82)	<.001
Multiple sunburns in the last year ^f	30.1 (0.7)	36.1 (3.5)	36.0 (3.2)	
	1.00 (Reference)	1.24 (1.03-1.49)	1.19 (1.01-1.40)	.02
Previous full-body skin examination ^g	24.4 (0.6)	24.7 (2.8)	22.1 (2.8)	
	1.00 (Reference)	1.11 (0.89-1.39)	1.21 (0.93-1.57)	.14

Study population included sun-exposed non-Hispanic white individuals aged 18-60 years reporting no history of skin cancer with complete data from the 2015 National Health Interview Survey.

^aIndoor tanning frequency is defined as none (0 times), moderate (1-9 times), and frequent (≥ 10 times) in the past year.

^bPercentages and mean values are weighted according to US census data.

^cPrevalence ratios (PR) are adjusted for continuous age, sex, region, tanning ability, education, physical activity, and continuous BMI.

^dThe *P* value for linear trend (*P* trend) was calculated using the Wald statistic treating the median frequency in each indoor tanning category as continuous.

^eOutcome variable: rarely/never use of the photoprotective practice vs at least sometimes using the photoprotective practice.

^fOutcome variable: multiple (≥ 2) sunburns vs fewer than 2 sunburns in the past year.

^gOutcome variable: having had a previous full-body skin examination vs never having had a full-body skin examination.