

Supplementary Online Content

Jonas Karl Eriksson, Martin Neovius, Johan Bratt, Ingemar F. Petersson, Ronald F. van Vollenhoven; Pierre Geborek, Sofia Ernestam. Biological vs conventional combination treatment and work loss in early rheumatoid arthritis: a randomized trial. *JAMA Internal Medicine*. Published online July 1, 2013. doi:10.1001/jamainternmed.2013.7801.

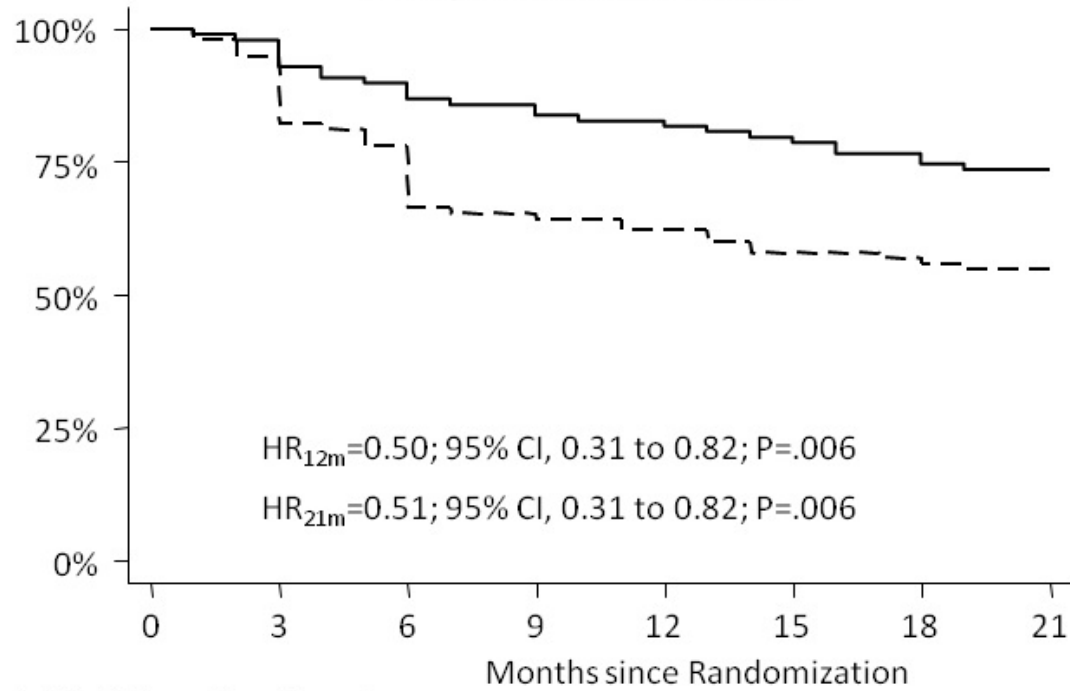
eFigure 1. Time to discontinuation by randomly allocated drug.

eFigure 2. Flow Chart of the Swedish pharmacotherapy (Swefot) trial and number of patients by type of analysis in the present study.

eFigure 3. Monthly days on sick leave and disability pension in randomized and non-randomized patients.

This supplementary material has been provided by the authors to give readers additional information about their work.

Drug Discontinuation

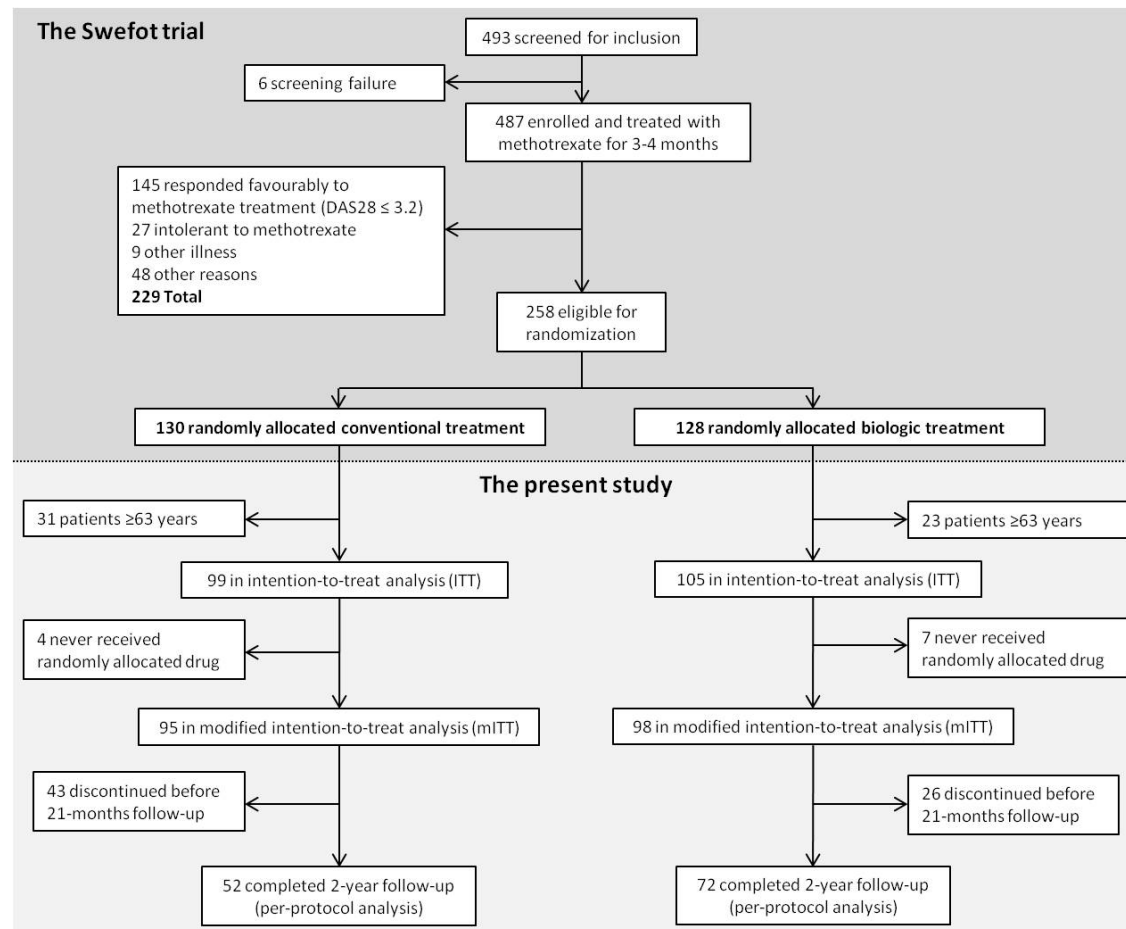


Number at risk (Discontinuations)

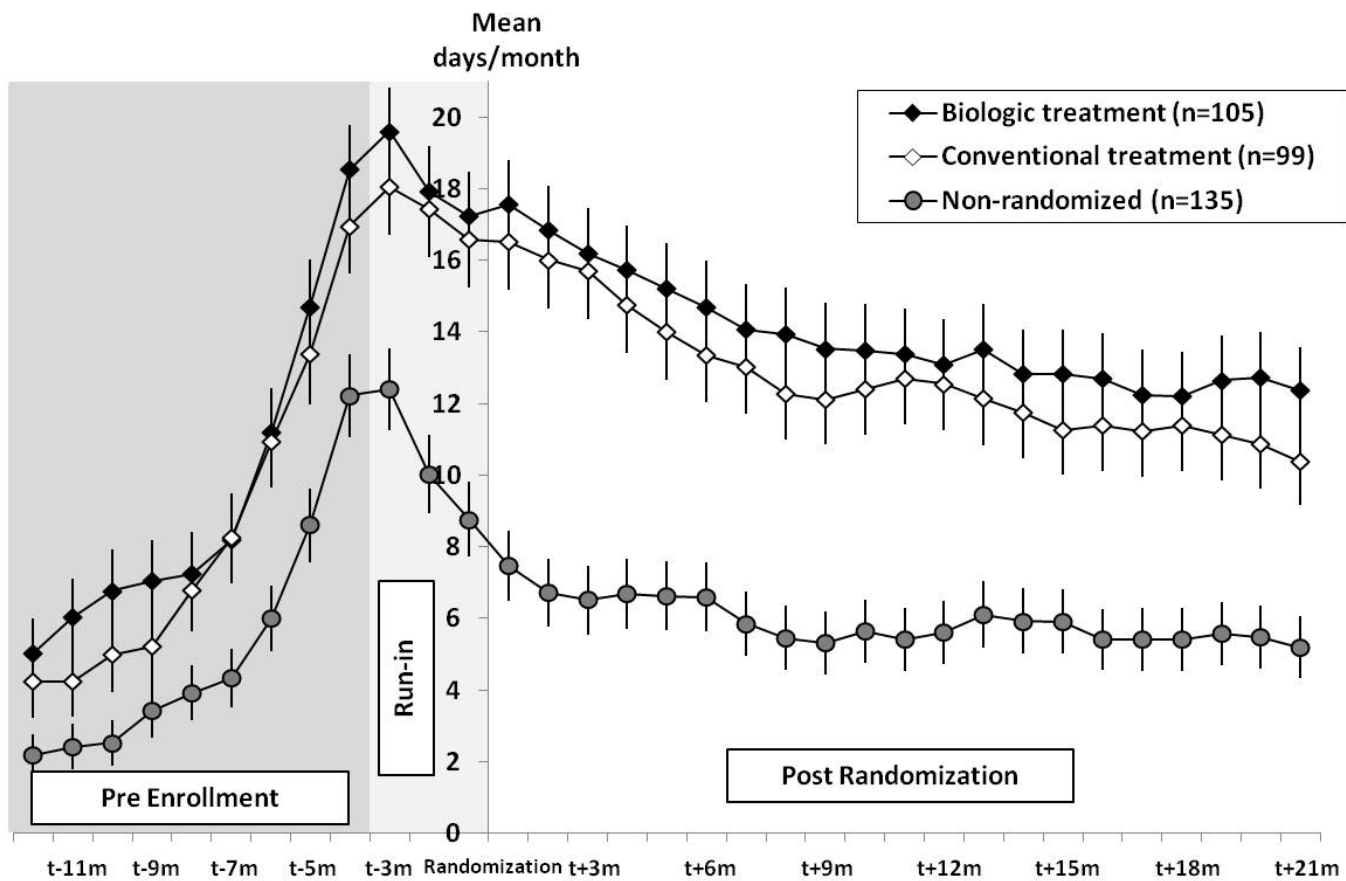
— Biologic treatment	98	(2)	96	(8)	88	(4)	84	(3)	81	(3)	78	(3)	75	(3)	72
- - - Conventional treatment	95	(5)	90	(16)	74	(12)	62	(3)	59	(4)	55	(1)	54	(2)	52

eFigure 1 Time to discontinuation by randomly allocated drug

HR: Hazard ratio



eFigure 2 Flow chart of the Swedish pharmacotherapy (Swefot) trial and number of patients by type of analysis in the present study



eFigure 3 Mean monthly days (maximum 30 days) on sick leave and disability pension in relation to date of randomization for randomized and non-randomized patients

Run-in: Mono-therapy with methotrexate; Bars indicate standard errors

©2013 American Medical Association. All rights reserved.