

Supplementary Online Content

Garzillo CL, Hueb W, Gersh B, et al. Association between stress testing–induced myocardial ischemia and clinical events in patients with multivessel coronary artery disease. *JAMA Intern Med*. Published online July 22, 2019.
doi:10.1001/jamainternmed.2019.2227

eTable. Baseline Characteristics of the 535 Patients With Exercise Stress Tests According to Treatment in MASS II Trial

eFigure 1. Survival Free of Cardiovascular Events According to Initial Assigned Treatment in Patients With (1A) and Without (1B) Stress Induced Ischemia

eFigure 2. Changes in Left Ventricular Ejection Fraction According to the Presence or Absence of Myocardial Ischemia in Each Treatment Group After 10-Year Follow-up

This supplementary material has been provided by the authors to give readers additional information about their work.

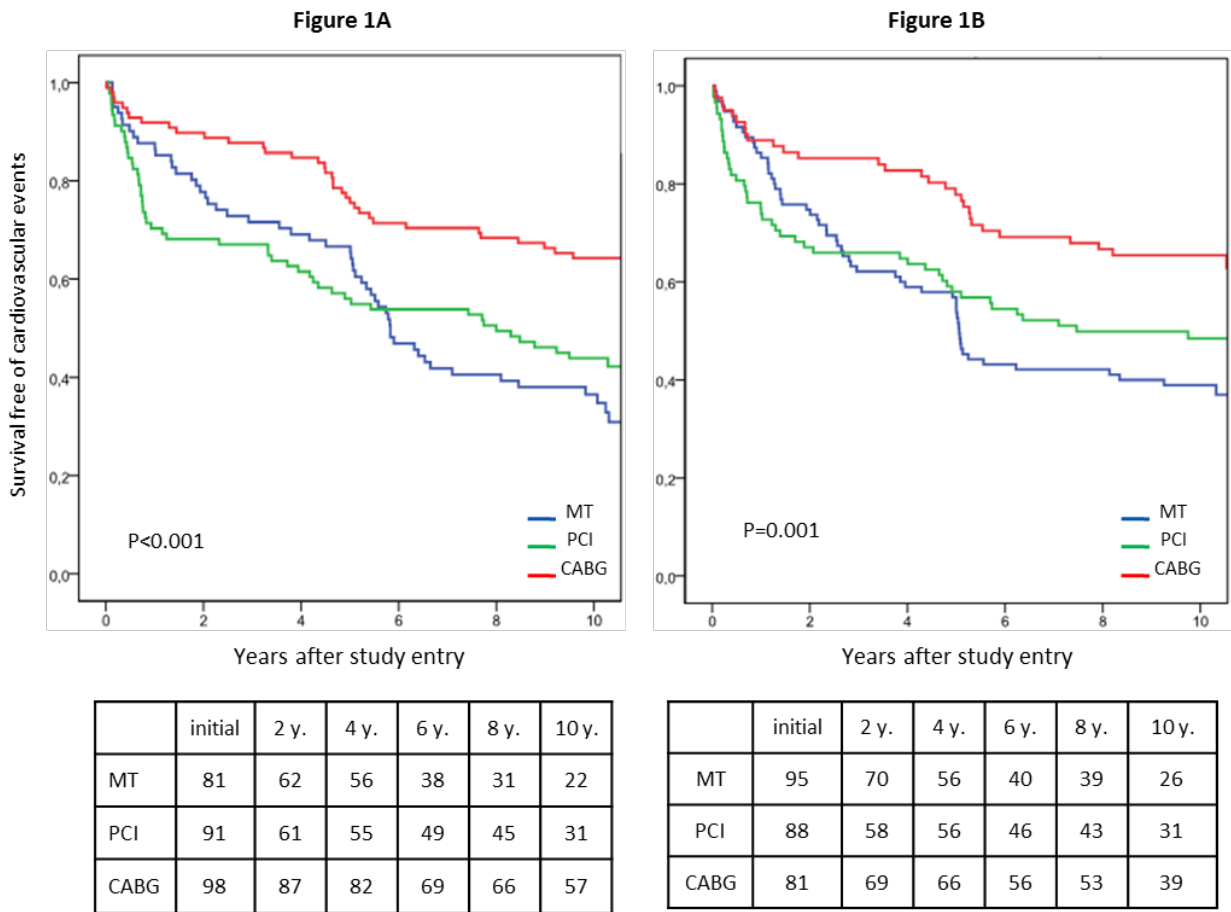
eTable. Baseline Characteristics of the 535 Patients With Exercise Stress Tests According to Treatment in MASS II Trial

	PCI (N=180)	CABG (N=179)	MT (N=176)	P-value
Demographic variables				
Age, mean (SD), y	59.5 (9.4)	59.5 (8.7)	59.9 (9.3)	0.91
Age ≥ 65 years (%)	32	31	33	0.90
Male (%)	66	73	70	0.24
Current or past smoker (%)	31	35	36	0.62
Clinical History and Status				
History of MI (%)	50	42	38	0.04
History of hypertension (%)	60	62	53	0.21
Treated diabetes mellitus (%)	31	39	40	0.14
Laboratory values				
Total Cholesterol, mean (SD)	230.1 (51.2)	217.7 (47.4)	223.6 (42.1)	0.048
LDL cholesterol, mean (SD)	151.0 (44.9)	144.1 (43.0)	149.1 (37.2)	0.27
HDL cholesterol, mean (SD)	36.8 (9.5)	37.8 (10.7)	37.9 (10.8)	0.56
Triglycerides, mean (SD)	205.9 (115.1)	182.3 (102.9)	189.2 (10.7)	0.11
Positive treadmill test (%)	50	54	46	0.26
Angiographic profile				
Double-vessel disease (%)	41	44	41	0.85
Triple vessel disease (%)	59	56	59	
Proximal LAD disease (%)	89	92	88	0.42

PCI, percutaneous coronary intervention; CABG, coronary artery bypass graft; MT, medical therapy; LDL, low-density lipoprotein; HDL, high-density lipoprotein; LAD,

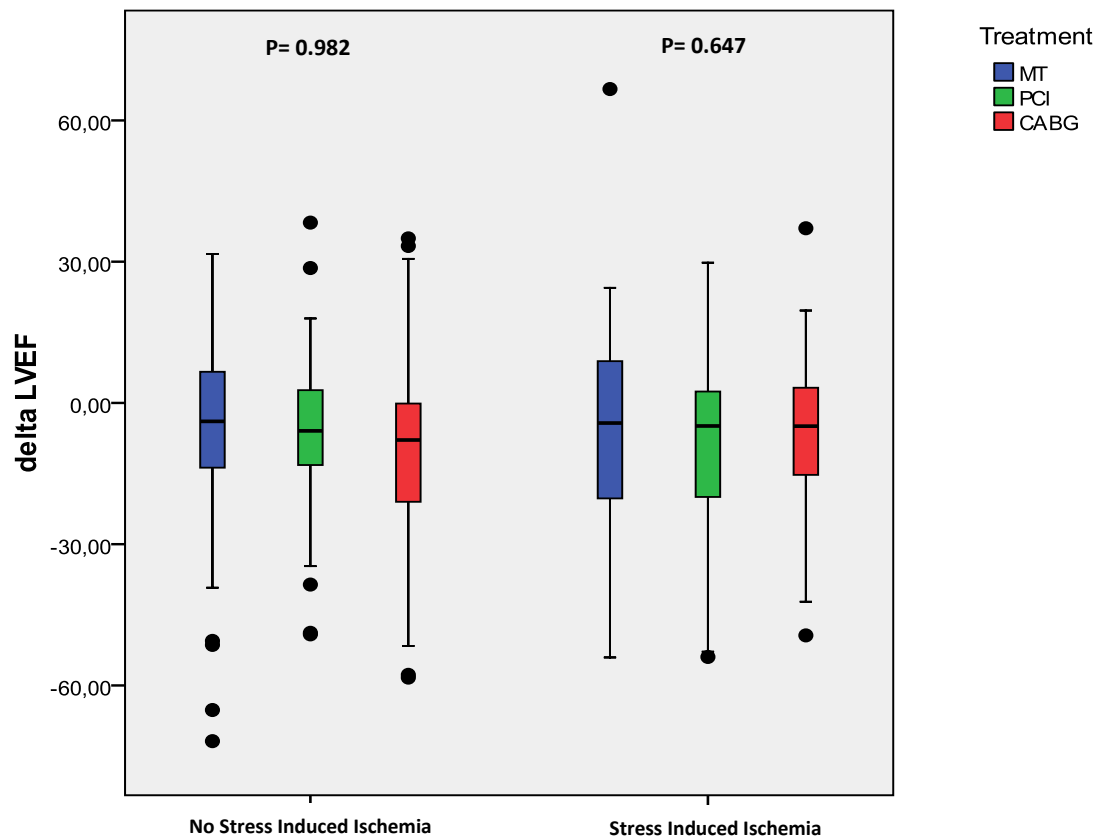
left anterior descending coronary artery. Unless otherwise indicated, data are mean \pm SD. Laboratory values are expressed in mg/dL.

eFigure 1. Survival Free of Cardiovascular Events According to Initial Assigned Treatment in Patients With (1A) and Without (1B) Stress Induced Ischemia



MT, medical treatment; PCI, percutaneous coronary intervention; CABG, coronary artery bypass graft. The primary endpoint is the sum of the first clinical event (AMI, additional interventions and overall mortality).

eFigure 2. Changes in Left Ventricular Ejection Fraction According to the Presence or Absence of Myocardial Ischemia in Each Treatment Group After 10-Year Follow-up



MT: medical therapy; PCI: percutaneous coronary intervention; CABG: coronary artery bypass graft; delta LVEF: $100 \times (\text{LVEF 10 year} - \text{LVEF baseline}) / \text{LVEF baseline}$; values expressed in median \pm SD.