

Supplementary Online Content

Statland JM, Bundy BN, Wang Y, et al; Consortium for Clinical Investigation of Neurologic Channelopathies. Mexiletine for symptoms and signs of myotonia in nondystrophic myotonia: a randomized controlled trial. *JAMA*. doi:10.1001/jama.2012.12607.

eTable. Homogeneity Testing: Treatment Effect Mean Difference (Mexiletine – Placebo) With 95% Confidence Interval

eFigure. IVR Flow Diagram

This supplementary material has been provided by the authors to give readers additional information about their work.

eTable. Homogeneity testing: Treatment Effect Mean Difference (Mexiletine – Placebo) with 95% Confidence Interval

Endpoint	Overall Treatment Effect Estimate*	Treatment Effect within Chloride†	Treatment Effect within Sodium‡	Treatment Effect within No Identified Mutation¤	Homogeneity Test
IVR—Stiffness – period 1§	-1.69 (-2.66, -0.723)	-1.67 (-2.73, -0.614)	-2.11 (-3.28, -0.933)	1.37 (-3.48, 6.22)	0.003
IVR—Stiffness – period 2§	-3.67 (-4.66, -2.68)	-4.18 (-5.25, -3.12)	-2.67 (-3.84, -1.51)	-2.57 (-4.50, -0.633)	0.003
IVR—Pain	-1.63 (-1.99, -1.26)	-1.55 (-2.04, -1.06)	-1.91 (-2.48, -1.34)	0.0507 (-1.64, 1.74)	0.08
IVR—Weakness	-1.26 (-1.67, -0.857)	-1.10 (-1.65, -0.550)	-1.44 (-2.08, -0.804)	-1.63 (-3.46, 0.196)	0.66
IVR—Tiredness	-0.916 (-1.30, -0.528)	-1.21 (-1.70, -0.709)	-0.494 (-1.12, 0.128)	-0.316 (-2.92, 2.29)	0.18
SF36 – Physical Component	5.57 (3.41, 7.72)	6.05 (3.34, 8.75)	5.47 (2.02, 8.92)	-6.83 (-21.4, 7.7)	0.2
SF36 – Mental Component	4.91 (2.30, 7.53)	5.85 (2.53, 9.18)	3.88 (-0.352, 8.12)	-3.92 (-21.5, 13.7)	0.44
INQoL – QOL	-2.69 (-4.09, -1.29)	-3.11 (-4.89, -1.34)	-2.28 (-4.55, -0.0124)	-	0.26
Clinical assessment – eye closure (seconds) €	-0.796 (-1.15, -0.438)	-0.751 (-1.22, -0.285)	-0.856 (-1.45, -0.263)	-1.04 (-3.48, 1.41)	0.94
Clinical assessment – hand grip (seconds) €	-0.851 (-1.28, -0.424)	-1.24 (-1.77, -0.711)	-0.355 (-1.03, 0.316)	1.06 (-1.61, 3.73)	0.04

* treatment effect estimate from model when adjusting for period and mutation class

†chloride channel mutations n=34

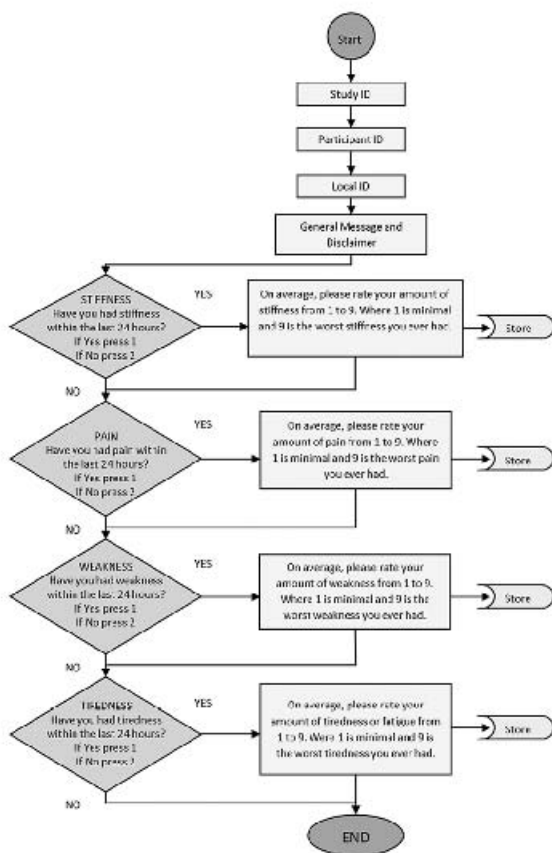
‡ sodium channel mutations n=21

¤ No identified mutation n=4

§ Primary endpoint

€ estimates are on the log(t + 0.1) scale

¥ The significance level of the combined homogeneity test was 0.007 i.e., including both sets of treatment-specific mutation class interaction terms in the model



eFigure 1. IVR Flow Diagram. Participants answer yes/no to whether they experienced symptoms since the prior call. If they answer “yes”, they are asked to rank symptom severity on a 1-9 scale.