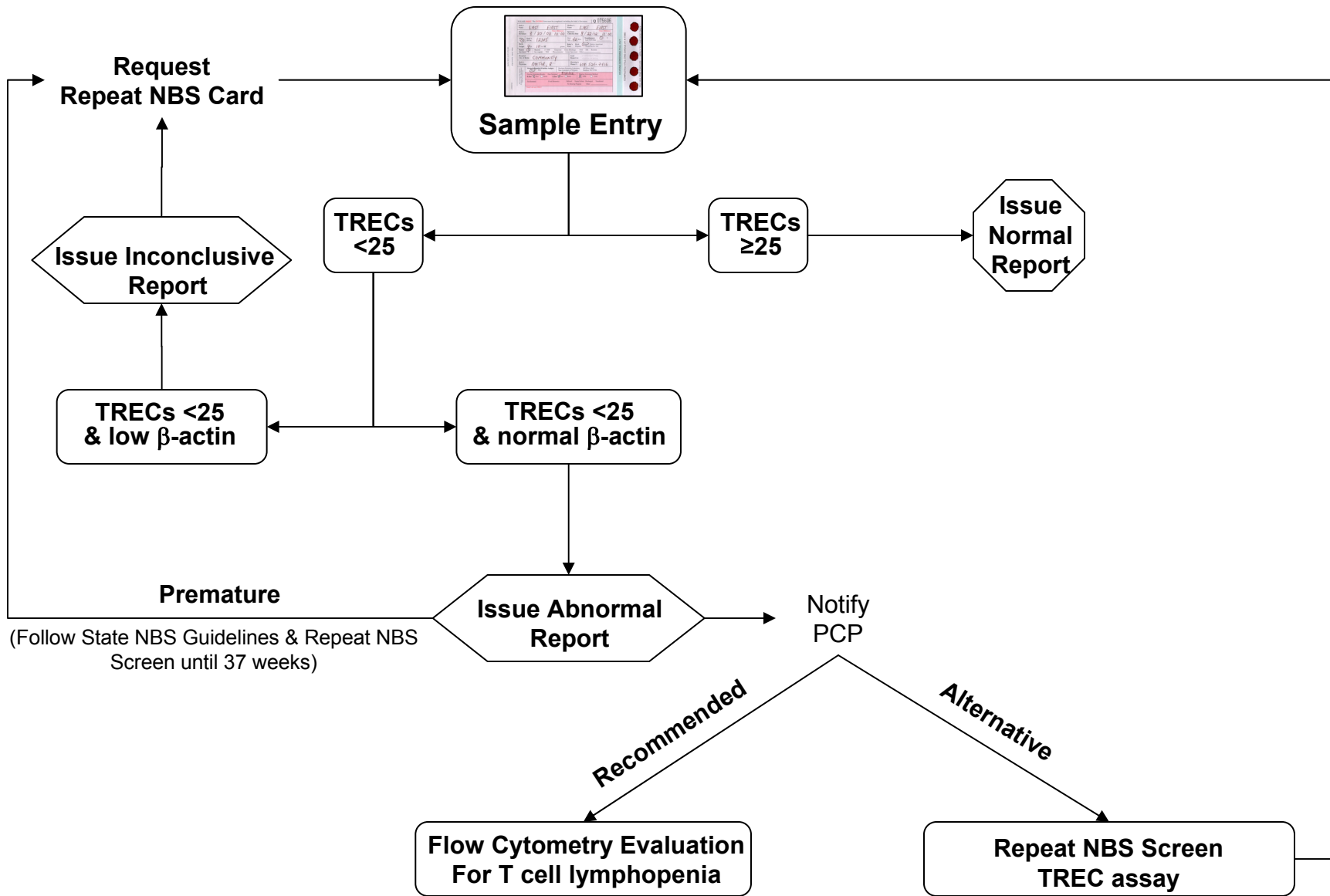


Supplementary Online Content

Routes JM, Grossman WJ, Verbsky J, et al. Statewide newborn screening for severe T-cell lymphopenia. *JAMA*. 2009;302(22):2465-2470.

eFigure. An Algorithm of TREC Analysis for NBS for Severe Combined Immunodeficiency

This supplementary material has been provided by the authors to give readers additional information about their work.



NBS indicates newborn blood screening; TRECs, T-cell receptor excision circles; PCP, primary care physician.