

Supplemental Online Content

Chow CK, Redfern J, Hillis GS, et al. Effect of lifestyle-focused text messaging on risk factor modification in patients with coronary heart disease: a randomized clinical trial. *JAMA*. doi:10.1001/jama.2015.10945.

eTable. Cardioprotective Medications at 6 Month Follow-up

eFigure 1. Subgroup Analyses for LDL-Cholesterol at 6 Months

eFigure 2. Stratified Analyses for SBP at 6 Months

eFigure 3. Stratified Analyses for BMI at 6 Months

This supplemental content was provided by the authors to give readers additional information about their work.

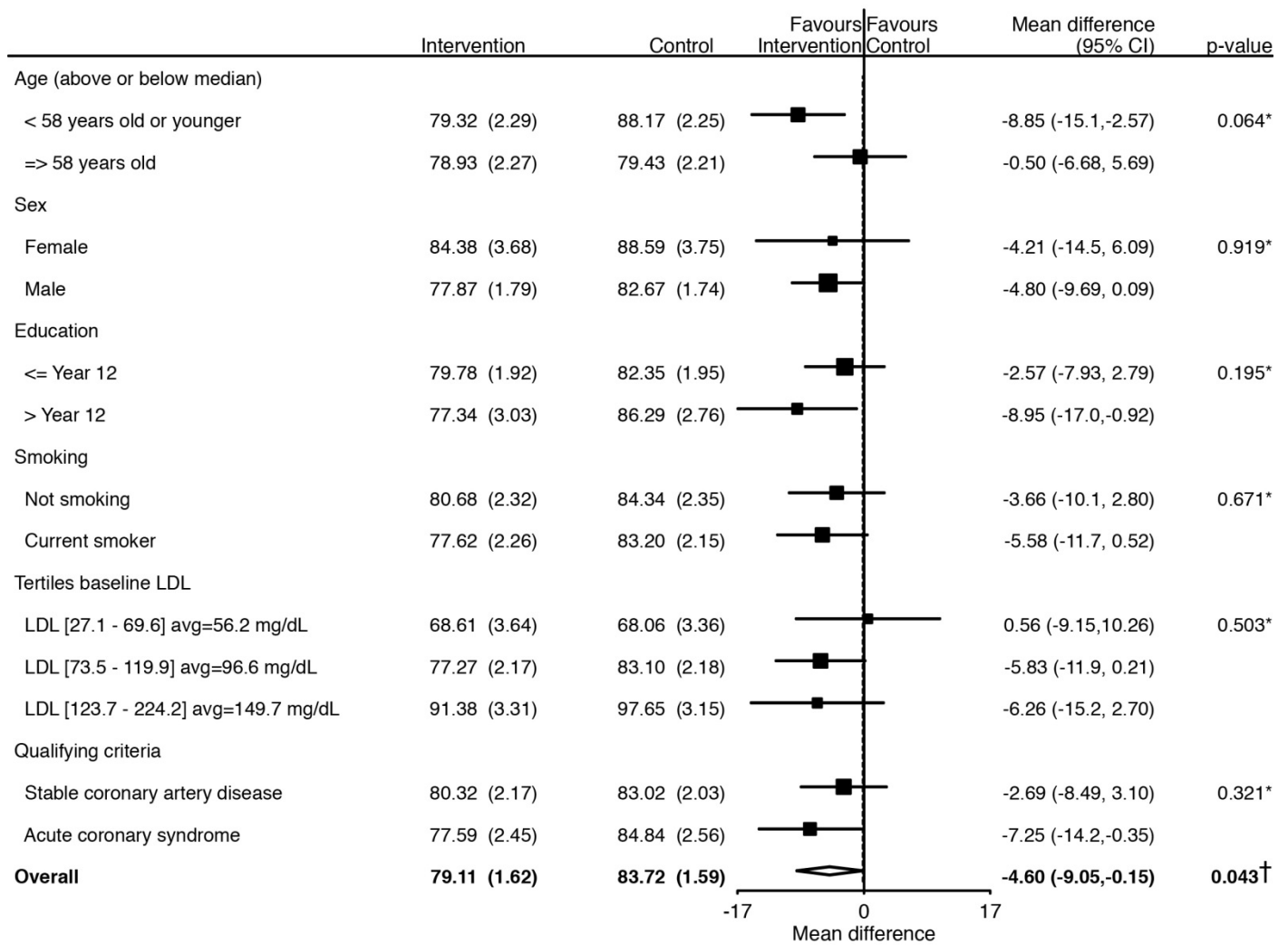
eTable. Cardioprotective Medications at 6 Month Follow-up

Variable	Intervention (N = 352)	Control (N = 358)	Relative risk (95% CI)	P for the difference
ACE/ARB	224/ 339 (66.1%)	254/ 354 (71.8%)		
Aspirin	307/ 339 (90.6%)	332/ 354 (93.8%)		
Beta-blocker	218/ 338 (64.5%)	223/ 354 (63.0%)		
Statin	311/ 339 (91.7%)	329/ 354 (92.9%)		
At least 3 of the 4*	264/ 338 (78.1%)	294/ 354 (83.1%)	0.94 (0.87 -1.01)	0.1016
All of the 4*	133/ 338 (39.3%)	149/ 354 (42.1%)	0.93 (0.78 -1.12)	0.4637

Note: * the 4 main medications are ACE/ARB, aspirin, beta-blocker and statin.

Note: Log-binomial regression including randomised groups (intervention/control) as fixed effect

eFigure 1. Subgroup Analyses for LDL-Cholesterol at 6 Months

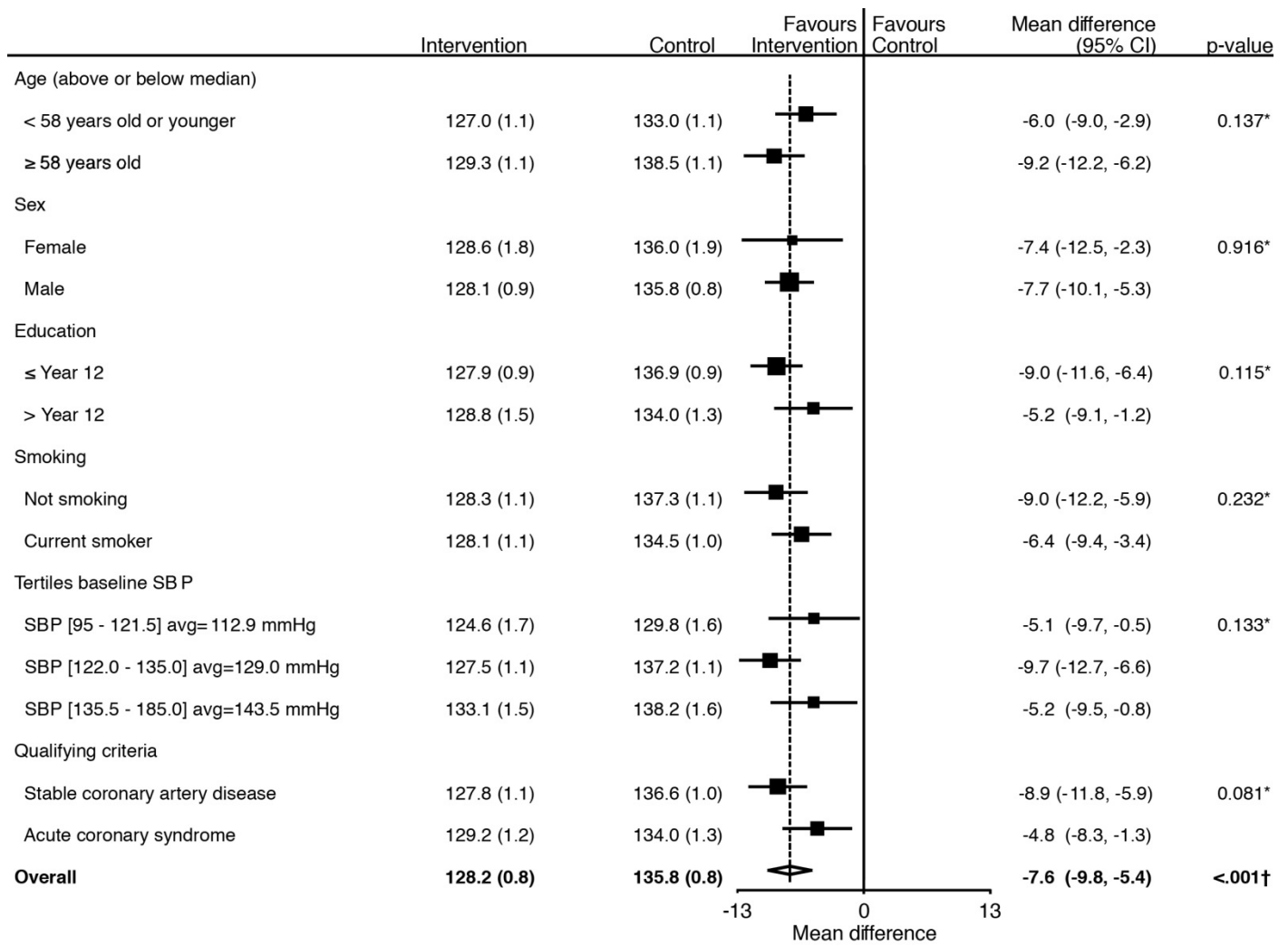


*p-value for homogeneity †p-value for overall effect

LDL cholesterol in mg/dL. Mean (standard error) for intervention and control.

LDL cholesterol in mg/dL. Mean (standard error) for intervention and control

eFigure 2. Stratified Analyses for SBP at 6 Months

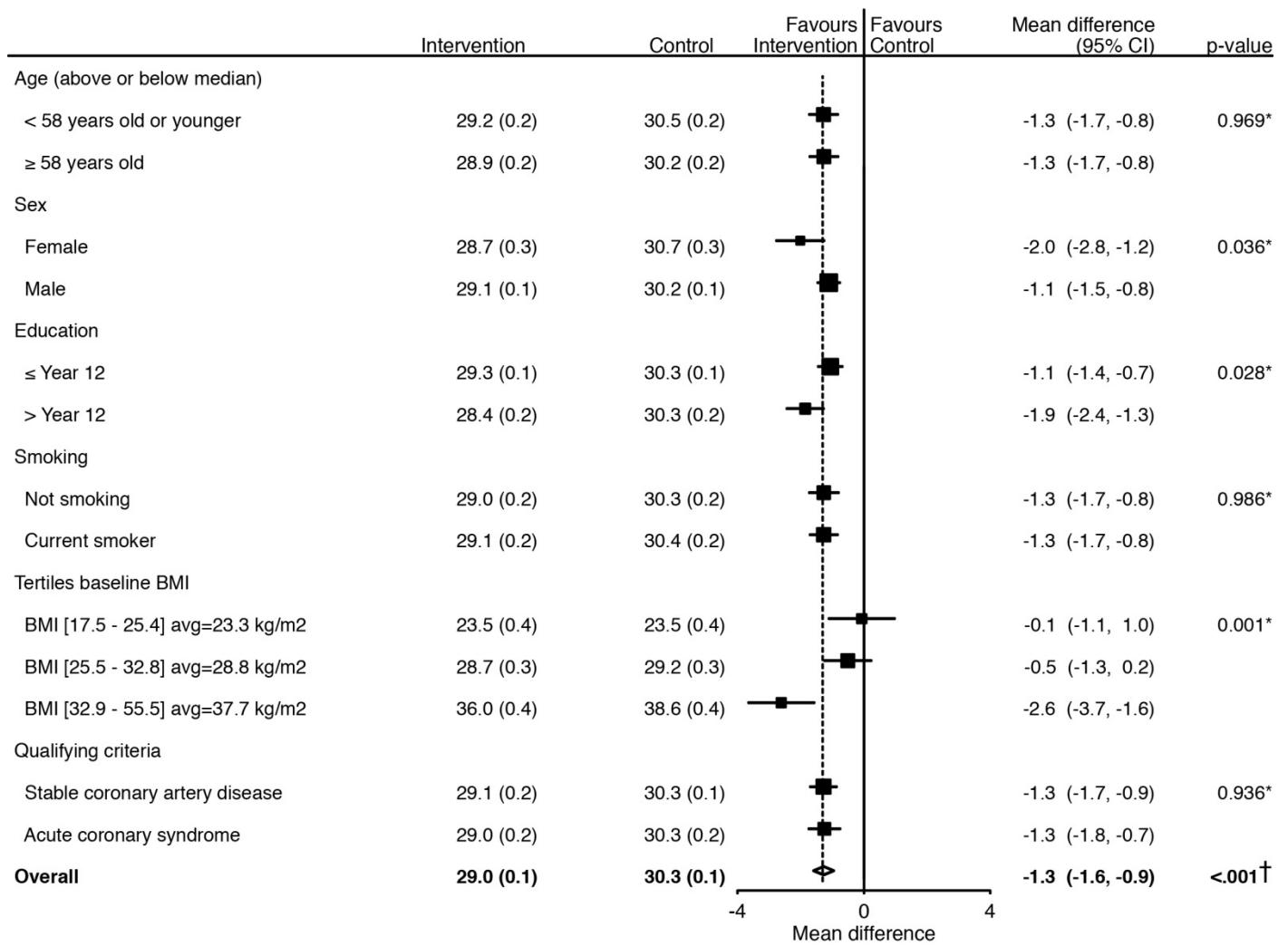


*p-value for homogeneity †p-value for overall effect

Systolic blood pressure in mmHg. Mean (standard error) for intervention and control.

Systolic blood pressure in mmHg. Mean (standard error) for intervention and control

eFigure 3. Stratified Analyses for BMI at 6 Months



*p-value for homogeneity †p-value for overall treatment effect

Body Mass Index (BMI) = weight (kg) / height². Mean (standard error) for intervention and control"

Body Mass Index (BMI) = weight (kg) / height (m²). Mean (standard error) for intervention and control