

Supplementary Online Content

O'Connell E, Rossom RC, Henninger M, Groom HC, Burda BU. Primary care screening for and treatment of depression in pregnant and postpartum women: evidence report and systematic review for the US Preventive Services Task Force. *JAMA*. doi:10.1001/jama.2015.18948.

eMethods. Literature search strategies

eTable 1. Quality assessment criteria

eTable 2. Summary of adjusted results of maternal and infant harms with second generation antidepressant use during pregnancy (Key Question 5)

eFigure 1. Diagnostic Accuracy of the Edinburgh Postnatal Depression Scale Relative to a Diagnostic Interview (Key Question 2)

eFigure 2. Diagnostic Accuracy of the Patient Health Questionnaire Relative to a Diagnostic Interview (Key Question 2)

eFigure 3. Funnel plot with pseudo 95% confidence limits of included studies of cognitive behavioral therapy (Key Question 4)

eFigure 4. Benefits of Depression Treatment, Depression Symptoms (Key Question 4)

This supplementary material has been provided by the authors to give readers additional information about their work.

Systematic Reviews Literature Search Strategies

Cochrane Database of Systematic Reviews Issue 10 of 12, October 2013

- #1 [mh ^depression] from 2008 to 2013, in Cochrane Reviews
- #2 [mh ^"depression, postpartum"] from 2008 to 2013, in Cochrane Reviews
- #3 [mh ^"depressive disorder, major"] from 2008 to 2013, in Cochrane Reviews
- #4 [mh ^"dysthymic disorder"] from 2008 to 2013, in Cochrane Reviews
- #5 [mh ^"depressive disorder"] from 2008 to 2013, in Cochrane Reviews
- #6 [mh ^"seasonal affective disorder"] from 2008 to 2013, in Cochrane Reviews
- #7 [mh ^"Depressive Disorder, Treatment-Resistant"] from 2008 to 2013, in Cochrane Reviews
- #8 (depress*.ti or dysthymi*.ti or antidepress*.ti or mood.ti) from 2008 to 2013, in Cochrane Reviews
- #9 #1 or #2 or #3 or #4 or #5 or #6 or #7 or #8 from 2008 to 2013, in Cochrane Reviews

Database of Abstracts of Reviews of Effects (Via CRD)

((depression or depressed or depressive or mood)):TI OR (dysthimi*):TI OR (antidepress*):TI
IN DARE FROM 2008 TO 2013

Health Technology Assessment

((depression or depressed or depressive or mood)):TI OR (dysthimi*):TI OR (antidepress*):TI
IN HTA FROM 2008 TO 2013

Medline

Database: Ovid MEDLINE(R) without Revisions <1996 to September Week 4 2013>, Ovid MEDLINE(R) Daily Update <October 01, 2013>, Ovid MEDLINE(R) In-Process & Other Non-Indexed Citations <October 01, 2013>

Search Strategy:

-
- 1 Depression/dh, dt, pc, rh, su, th [Diet Therapy, Drug Therapy, Prevention & Control, Rehabilitation, Surgery, Therapy] ()
 - 2 Depression, Postpartum/dh, dt, pc, rh, su, th ()
 - 3 Depressive Disorder, Major/dh, dt, pc, rh, su, th ()
 - 4 Dysthymic Disorder/dh, dt, pc, rh, su, th ()
 - 5 Depressive Disorder/dh, dt, pc, rh, su, th ()
 - 6 Depressive Disorder, Treatment-Resistant/dh, dt, pc, rh, su, th ()
 - 7 Depression/ ()
 - 8 Depression, Postpartum/ ()
 - 9 Depressive Disorder, Major/ ()
 - 10 Dysthymic Disorder/ ()
 - 11 Depressive Disorder/ ()
 - 12 Depressive Disorder, Treatment-Resistant/ ()
 - 13 Mass screening/ ()
 - 14 screen\$.ti,ab. ()

- 15 13 or 14 ()
- 16 7 or 8 or 9 or 10 or 11 or 12 ()
- 17 15 and 16 ()
- 18 1 or 2 or 3 or 4 or 5 or 6 or 17 ()
- 19 limit 18 to "all adult (19 plus years)" ()
- 20 limit 19 to systematic reviews ()
- 21 limit 20 to (english language and yr="2008 -Current") ()
- 22 depression.ti. ()
- 23 depressed.ti. ()
- 24 depressive.ti. ()
- 25 dysthymi\$.ti. ()
- 26 antidepress\$.ti. ()
- 27 mood.ti. ()
- 28 22 or 23 or 24 or 25 or 26 or 27 ()
- 29 limit 28 to systematic reviews ()
- 30 limit 29 to ("in data review" or in process or "pubmed not medline") ()
- 31 limit 30 to (english language and yr="2008 -Current") ()
- 32 21 or 31 ()
- 33 remove duplicates from 32 ()

PubMed

#3 Search #2 AND publisher[*sb*] Filters: Publication date from 2008/01/01 to 2013/12/31;
English

#2 Search #1 AND systematic[*sb*]

#1 Search depression[*ti*] OR depressive[*ti*] OR depressed[*ti*] OR antidepress*[*ti*] OR
dysthymi*[*ti*] OR mood[*ti*]

PsycINFO <1806 to October Week 1 2013>

Search Strategy:

-
- 1 major depression/ ()
 - 2 dysthymic disorder/ ()
 - 3 Postpartum Depression/ ()
 - 4 Recurrent Depression/ ()
 - 5 Treatment Resistant Depression/ ()
 - 6 "Depression (Emotion)"/ ()
 - 7 1 or 2 or 3 or 4 or 5 or 6 ()
 - 8 limit 7 to "300 adulthood <age 18 yrs and older>" ()
 - 9 limit 8 to "0830 systematic review" ()
 - 10 limit 8 to 1200 meta analysis ()
 - 11 9 or 10 ()
 - 12 limit 11 to (english language and yr="2008 -Current") ()

Literature Search Strategies for Primary Literature

Ovid Medline

General adult population - screening

Database: Ovid MEDLINE(R) without Revisions <1996 to January Week 2 2015>, Ovid MEDLINE(R) In-Process & Other Non-Indexed Citations <January 19, 2015>, Ovid MEDLINE(R) Daily Update < January 19, 2015>

Search Strategy:

-
- 1 Depression/ ()
 - 2 Depressive Disorder/ ()
 - 3 Depressive Disorder, Major/ ()
 - 4 Dysthymic Disorder/ ()
 - 5 depress\$.ti,ab. ()
 - 6 dysthym\$.ti,ab. ()
 - 7 1 or 2 or 3 or 4 or 5 or 6 ()
 - 8 Mass screening/ ()
 - 9 screen\$.ti,ab. ()
 - 10 casefinding.ti,ab. ()
 - 11 case finding.ti,ab. ()
 - 12 (diagnos\$ or detect\$ or identif\$).ti. ()
 - 13 8 or 9 or 10 or 11 or 12 ()
 - 14 7 and 13 ()
 - 15 Mental disorders/di ()
 - 16 depress\$.ti,ab. ()
 - 17 15 and 16 ()
 - 18 14 or 17 ()
 - 19 clinical trials as topic/ or controlled clinical trials as topic/ or randomized controlled trials as topic/ or meta-analysis as topic/ ()
 - 20 (clinical trial or controlled clinical trial or meta analysis or randomized controlled trial).pt. ()
 - 21 (random\$ or placebo\$).ti,ab. ()
 - 22 control groups/ or double-blind method/ or single-blind method/ ()
 - 23 clinical trial\$.ti,ab. ()
 - 24 controlled trial\$.ti,ab. ()
 - 25 (meta analy\$ or metaanaly\$).ti,ab. ()
 - 26 19 or 20 or 21 or 22 or 23 or 24 or 25 ()
 - 27 18 and 26 ()
 - 28 limit 27 to "all child (0 to 18 years)" ()
 - 29 limit 27 to "all adult (19 plus years)" ()
 - 30 28 not 29 ()
 - 31 27 not 30 ()
 - 32 limit 31 to (english language and yr="2009 -Current") ()
 - 33 remove duplicates from 32 ()

Pregnant and postpartum women – screening and test performance

Database: Ovid MEDLINE(R) without Revisions <1996 to January Week 2 2015>, Ovid MEDLINE(R) In-Process & Other Non-Indexed Citations < January 19, 2015>, Ovid MEDLINE(R) Daily Update < January 19, 2015>

Search Strategy:

-
- 1 Pregnancy/ ()
 - 2 Pregnant women/ ()
 - 3 Prenatal care/ ()
 - 4 Perinatal care/ ()
 - 5 Postnatal care/ ()
 - 6 Postpartum period/ ()
 - 7 Peripartum period/ ()
 - 8 Maternal Health Services/ ()
 - 9 Puerperal Disorders/ ()
 - 10 pregnan\$.ti,ab. ()
 - 11 prenatal.ti,ab. ()
 - 12 pre natal.ti,ab. ()
 - 13 perinatal.ti,ab. ()
 - 14 peri natal.ti,ab. ()
 - 15 antenatal.ti,ab. ()
 - 16 ante natal.ti,ab. ()
 - 17 antepartum.ti,ab. ()
 - 18 ante partum.ti,ab. ()
 - 19 postnatal.ti,ab. ()
 - 20 post natal.ti,ab. ()
 - 21 postpartum.ti,ab. ()
 - 22 post partum.ti,ab. ()
 - 23 new mother\$.ti,ab. ()
 - 24 puerperal.ti,ab. ()
 - 25 1 or 2 or 3 or 4 or 5 or 6 or 7 or 8 or 9 or 10 or 11 or 12 or 13 or 14 or 15 or 16 or 17 or 18 or 19 or 20 or 21 or 22 or 23 or 24 ()
 - 26 Depression/ ()
 - 27 Depressive Disorder/ ()
 - 28 Depressive Disorder, Major/ ()
 - 29 Dysthymic Disorder/ ()
 - 30 Anxiety/ ()
 - 31 depress\$.ti,ab. ()
 - 32 dysthym\$.ti,ab. ()
 - 33 (anxiety or anxious).ti,ab. ()
 - 34 blues.ti,ab. ()
 - 35 26 or 27 or 28 or 29 or 30 or 31 or 32 or 33 or 34 ()
 - 36 25 and 35 ()
 - 37 Depression, Postpartum/ ()
 - 38 36 or 37 ()

39 Mass screening/ ()
40 Questionnaires/ ()
41 Interview/ ()
42 Psychiatric Status Rating Scales/ ()
43 Self Report/ ()
44 screen\$.ti,ab. ()
45 casefinding.ti,ab. ()
46 case finding.ti,ab. ()
47 self report\$.ti,ab. ()
48 (depress\$ adj5 (scale\$ or inventor\$ or questionnaire\$ or survey\$ or index\$ or checklist\$ or interview\$)).ti,ab. ()
49 Patient Health Questionnaire.ti,ab. ()
50 PHQ-2.ti,ab. ()
51 PHQ-9.ti,ab. ()
52 "Hospital Anxiety and Depression Scale".ti,ab. ()
53 Geriatric Depression Scale.ti,ab. ()
54 Beck Depression Inventory.ti,ab. ()
55 Center for Epidemiologic Studies Depression Scale.ti,ab. ()
56 Hamilton Depression Rating Scale.ti,ab. ()
57 Hamilton Rating Scale for Depression.ti,ab. ()
58 Montgomery-Asberg Depression Rating Scale.ti,ab. ()
59 Zung Self-Rating Depression Scale.ti,ab. ()
60 Quick Inventory of Depressive Symptoms.ti,ab. ()
61 Mini-Neuropsychiatric Interview.ti,ab. ()
62 Composite International Diagnostic Interview.ti,ab. ()
63 Primary Care Evaluation of Mental Disorders.ti,ab. ()
64 PRIME-MD.ti,ab. ()
65 Center for Epidemiologic Studies Depression Scale.ti,ab. ()
66 CES-D.ti,ab. ()
67 General Health Questionnaire.ti,ab. ()
68 GHQ-D.ti,ab. ()
69 Generalized Contentment Scale.ti,ab. ()
70 Edinburgh Postpartum Depression Scale.ti,ab. ()
71 EPDS.ti,ab. ()
72 Bromley Postnatal Depression Scale.ti,ab. ()
73 Postpartum Depression Screening Scale.ti,ab. ()
74 PDSS.ti,ab. ()
75 Leverton Questionnaire.ti,ab. ()
76 Postpartum Depression Predictors Inventory.ti,ab. ()
77 PDPI\$.ti,ab. ()
78 39 or 40 or 41 or 42 or 43 or 44 or 45 or 46 or 47 or 48 or 49 or 50 or 51 or 52 or 53 or 54 or 55 or 56 or 57 or 58 or 59 or 60 or 61 or 62 or 63 or 64 or 65 or 66 or 67 or 68 or 69 or 70 or 71 or 72 or 73 or 74 or 75 or 76 or 77 ()
79 38 and 78 ()
80 Postpartum Depression/di ()
81 79 or 80 ()

82 clinical trials as topic/ or controlled clinical trials as topic/ or randomized controlled trials as topic/ or meta-analysis as topic/ ()
 83 (clinical trial or controlled clinical trial or meta analysis or randomized controlled trial).pt. ()
 84 (random\$ or placebo\$).ti,ab. ()
 85 control groups/ or double-blind method/ or single-blind method/ ()
 86 clinical trial\$.ti,ab. ()
 87 controlled trial\$.ti,ab. ()
 88 (meta analy\$ or metaanaly\$).ti,ab. ()
 89 82 or 83 or 84 or 85 or 86 or 87 or 88 ()
 90 81 and 89 ()
 91 limit 90 to (english language and yr="2012 -Current") ()
 92 "Sensitivity and Specificity"/ ()
 93 "Predictive Value of Tests"/ ()
 94 ROC Curve/ ()
 95 False Negative Reactions/ ()
 96 False Positive Reactions/ ()
 97 Diagnostic Errors/ ()
 98 "Reproducibility of Results"/ ()
 99 Reference Values/ ()
 100 Reference Standards/ ()
 101 Observer Variation/ ()
 102 Receiver operat\$.ti,ab. ()
 103 ROC curve\$.ti,ab. ()
 104 sensitivit\$.ti,ab. ()
 105 specificit\$.ti,ab. ()
 106 predictive value.ti,ab. ()
 107 accuracy.ti,ab. ()
 108 false positive\$.ti,ab. ()
 109 false negative\$.ti,ab. ()
 110 miss rate\$.ti,ab. ()
 111 error rate\$.ti,ab. ()
 112 92 or 93 or 94 or 95 or 96 or 97 or 98 or 99 or 100 or 101 or 102 or 103 or 104 or 105 or 106 or 107 or 108 or 109 or 110 or 111 ()
 113 81 and 112 ()
 114 limit 113 to (english language and yr="2012 -Current") ()
 115 91 or 114 ()
 116 remove duplicates from 115 ()

Pregnant and postpartum women – drug treatment and harms

Database: Ovid MEDLINE(R) without Revisions <1996 to January Week 2 2015>, Ovid MEDLINE(R) In-Process & Other Non-Indexed Citations < January 19, 2015>, Ovid MEDLINE(R) Daily Update < January 19, 2015>
 Search Strategy:

 1 Pregnancy/ ()

- 2 Pregnant women/ ()
- 3 Prenatal care/ ()
- 4 Perinatal care/ ()
- 5 Postnatal care/ ()
- 6 Postpartum period/ ()
- 7 Peripartum Period/ ()
- 8 Maternal Health Services/ ()
- 9 Puerperal Disorders/ ()
- 10 pregnan\$.ti,ab. ()
- 11 prenatal.ti,ab. ()
- 12 pre natal.ti,ab. ()
- 13 perinatal.ti,ab. ()
- 14 peri natal.ti,ab. ()
- 15 antenatal.ti,ab. ()
- 16 ante natal.ti,ab. ()
- 17 antepartum.ti,ab. ()
- 18 ante partum.ti,ab. ()
- 19 postnatal.ti,ab. ()
- 20 post natal.ti,ab. ()
- 21 postpartum.ti,ab. ()
- 22 post partum.ti,ab. ()
- 23 new mother\$.ti,ab. ()
- 24 puerperal.ti,ab. ()
- 25 1 or 2 or 3 or 4 or 5 or 6 or 7 or 8 or 9 or 10 or 11 or 12 or 13 or 14 or 15 or 16 or 17 or 18 or 19 or 20 or 21 or 22 or 23 or 24 ()
- 26 Depression/ ()
- 27 Depressive Disorder/ ()
- 28 Depressive Disorder, Major/ ()
- 29 Dysthymic Disorder/ ()
- 30 Anxiety/ ()
- 31 depress\$.ti,ab. ()
- 32 dysthym\$.ti,ab. ()
- 33 (anxiety or anxious).ti,ab. ()
- 34 blues.ti,ab. ()
- 35 26 or 27 or 28 or 29 or 30 or 31 or 32 or 33 or 34 ()
- 36 25 and 35 ()
- 37 Depression, Postpartum/ ()
- 38 36 or 37 ()
- 39 Antidepressive Agents/ ()
- 40 Antidepressive Agents, Second-Generation/ ()
- 41 Serotonin Uptake Inhibitors/ ()
- 42 Neurotransmitter Uptake Inhibitors/ ()
- 43 Adrenergic Uptake Inhibitors/ ()
- 44 Dopamine Uptake Inhibitors/ ()
- 45 Citalopram/ ()
- 46 Fluoxetine/ ()

47 Fluvoxamine/ ()
48 Paroxetine/ ()
49 Sertraline/ ()
50 Bupropion/ ()
51 (antidepress\$ or anti depress\$).ti,ab. ()
52 pharmacotherap\$.ti,ab. ()
53 (psychotropic adj (drug\$ or agent\$ or medicat\$ or medicine\$)).ti,ab. ()
54 Serotonin\$ Uptake Inhib\$.ti,ab. ()
55 Serotonin\$ Re uptake Inhib\$.ti,ab. ()
56 Serotonin\$ Reuptake Inhib\$.ti,ab. ()
57 (serotonergic adj (drug\$ or agent\$ or medicat\$)).ti,ab. ()
58 SSRI\$.ti,ab. ()
59 SNRI\$.ti,ab. ()
60 Neurotransmitter Uptake Inhib\$.ti,ab. ()
61 Neurotransmitter Re uptake Inhib\$.ti,ab. ()
62 Neurotransmitter Reuptake Inhib\$.ti,ab. ()
63 Adrenergic Uptake Inhib\$.ti,ab. ()
64 Adrenergic Re uptake Inhib\$.ti,ab. ()
65 Adrenergic Reuptake Inhib\$.ti,ab. ()
66 Norepinephrine Uptake Inhib\$.ti,ab. ()
67 Norepinephrine Re uptake Inhib\$.ti,ab. ()
68 Norepinephrine Reuptake Inhib\$.ti,ab. ()
69 Dopamine Uptake Inhib\$.ti,ab. ()
70 Dopamine Re uptake Inhib\$.ti,ab. ()
71 Dopamine Reuptake Inhib\$.ti,ab. ()
72 Bupropion.ti,ab. ()
73 Celexa.ti,ab. ()
74 Citalopram.ti,ab. ()
75 Cymbalta.ti,ab. ()
76 Desvenlafaxine.ti,ab. ()
77 Duloxetine.ti,ab. ()
78 Effexor.ti,ab. ()
79 Escitalopram.ti,ab. ()
80 Fluoxetine.ti,ab. ()
81 Fluvoxamine.ti,ab. ()
82 Lexapro.ti,ab. ()
83 Mirtazapine.ti,ab. ()
84 Nefazodone.ti,ab. ()
85 Paroxetine.ti,ab. ()
86 Paxil.ti,ab. ()
87 Pexeva.ti,ab. ()
88 Pristiq.ti,ab. ()
89 Prozac.ti,ab. ()
90 Remeron.ti,ab. ()
91 Sertraline.ti,ab. ()
92 Trazadone.ti,ab. ()

93 Venlafaxine.ti,ab. ()
94 Wellbutrin.ti,ab. ()
95 Zoloft.ti,ab. ()
96 39 or 40 or 41 or 42 or 43 or 44 or 45 or 46 or 47 or 48 or 49 or 50 or 51 or 52 or 53 or 54 or 55 or 56 or 57 or 58 or 59 or 60 or 61 or 62 or 63 or 64 or 65 or 66 or 67 or 68 or 69 or 70 or 71 or 72 or 73 or 74 or 75 or 76 or 77 or 78 or 79 or 80 or 81 or 82 or 83 or 84 or 85 or 86 or 87 or 88 or 89 or 90 or 91 or 92 or 93 or 94 or 95 ()
97 38 and 96 ()
98 Depression, Postpartum/dt [Drug Therapy] ()
99 97 or 98 ()
100 clinical trials as topic/ or controlled clinical trials as topic/ or randomized controlled trials as topic/ or meta-analysis as topic/ ()
101 (clinical trial or controlled clinical trial or meta analysis or randomized controlled trial).pt. ()
102 (random\$ or placebo\$).ti,ab. ()
103 control groups/ or double-blind method/ or single-blind method/ ()
104 clinical trial\$.ti,ab. ()
105 controlled trial\$.ti,ab. ()
106 (meta analy\$ or metaanaly\$).ti,ab. ()
107 100 or 101 or 102 or 103 or 104 or 105 or 106 ()
108 99 and 107 ()
109 limit 108 to (english language and yr="2012 -Current") ()
110 Mortality/ ()
111 Morbidity/ ()
112 Death/ ()
113 "Drug-Related Side Effects and Adverse Reactions"/ ()
114 safety.ti,ab. ()
115 harm\$.ti,ab. ()
116 mortality.ti,ab. ()
117 toxicity.ti,ab. ()
118 complication\$.ti,ab. ()
119 (death or deaths).ti,ab. ()
120 (adverse adj2 (interaction\$ or response\$ or effect\$ or event\$ or reaction\$ or outcome\$)).ti,ab. ()
121 adverse effects.fs. ()
122 toxicity.fs. ()
123 mortality.fs. ()
124 Prenatal Injuries/ ()
125 Prenatal Exposure Delayed Effects/ ()
126 Fetal Development/ ()
127 Congenital Abnormalities/ ()
128 Abnormalities, Drug-Induced/ ()
129 (deform\$ or malform\$).ti,ab. ()
130 (congenital adj (defect\$ or abnormality)).ti,ab. ()
131 birth defect\$.ti,ab. ()
132 teratogen\$.ti,ab. ()
133 birth outcome\$.ti,ab. ()

134 Infant, Low Birth Weight/ ()
135 Infant, Small for Gestational Age/ ()
136 Infant, Very Low Birth Weight/ ()
137 Infant, Extremely Low Birth Weight/ ()
138 low birth weight\$.ti,ab. ()
139 small for gestational age.ti,ab. ()
140 fetal growth.ti,ab. ()
141 Maternal Exposure/ ()
142 maternal exposure.ti,ab. ()
143 Pregnancy Outcome/ ()
144 pregnancy outcome\$.ti,ab. ()
145 Pregnancy Complications/ ()
146 Pregnancy Complications, Cardiovascular/ ()
147 (cardiac or cardiovascular).ti,ab. ()
148 Suicide/ ()
149 Suicidal Ideation/ ()
150 Suicide, Attempted/ ()
151 suicid\$.ti,ab. ()
152 Seizures/ ()
153 seizure\$.ti,ab. ()
154 Hyponatremia/ ()
155 hyponatremi\$.ti,ab. ()
156 Drug-Induced Liver Injury/ ()
157 hepatotoxicity.ti,ab. ()
158 Serotonin Syndrome/ ()
159 serotonin syndrome.ti,ab. ()
160 Hypertension/ ()
161 (blood pressure\$ or hypertens\$).ti,ab. ()
162 Sexual Dysfunction, Physiological/ ()
163 (sexual adj (function\$ or disorder\$ or dysfunction\$)).ti,ab. ()
164 (libido adj3 (decrease\$ or loss)).ti,ab. ()
165 Nausea/ ()
166 Vomiting/ ()
167 (nausea\$ or nauseous or vomit\$).ti,ab. ()
168 Diarrhea/ ()
169 diarr\$.ti,ab. ()
170 Dizziness/ ()
171 (dizzy or dizziness).ti,ab. ()
172 Headache/ ()
173 headache\$.ti,ab. ()
174 Xerostomia/ ()
175 xerostomia\$.ti,ab. ()
176 (dry\$ adj3 mouth).ti,ab. ()
177 Weight Gain/ ()
178 (weight adj3 (gain\$ or increase\$)).ti,ab. ()
179 Metabolic Syndrome X/ ()

180 metabolic syndrome.ti,ab. ()
 181 withdrawal\$.ti,ab. ()
 182 discontinu\$.ti,ab. ()
 183 110 or 111 or 112 or 113 or 114 or 115 or 116 or 117 or 118 or 119 or 120 or 121 or 122 or
 123 or 124 or 125 or 126 or 127 or 128 or 129 or 130 or 131 or 132 or 133 or 134 or 135 or 136
 or 137 or 138 or 139 or 140 or 141 or 142 or 143 or 144 or 145 or 146 or 147 or 148 or 149 or
 150 or 151 or 152 or 153 or 154 or 155 or 156 or 157 or 158 or 159 or 160 or 161 or 162 or 163
 or 164 or 165 or 166 or 167 or 168 or 169 or 170 or 171 or 172 or 173 or 174 or 175 or 176 or
 177 or 178 or 179 or 180 or 181 or 182 ()
 184 99 and 183 ()
 185 Milk, human/ ()
 186 Lactation/ ()
 187 Breast Feeding/ ()
 188 Breast Milk Expression/ ()
 189 (breast feed\$ or breastfeed\$ or breast fed or breastfed or lactat\$.ti,ab. ()
 190 185 or 186 or 187 or 188 or 189 ()
 191 (96 or 98) and 190 ()
 192 184 or 191 ()
 193 limit 192 to (english language and yr="2012 -Current") ()
 194 109 or 193 ()
 195 Animal/ not (Animal/ and Human/) ()
 196 194 not 195 ()
 197 remove duplicates from 196 ()

Pregnant and postpartum women – psychotherapy treatment

Database: Ovid MEDLINE(R) without Revisions <1996 to January Week 2 2015>, Ovid
 MEDLINE(R) In-Process & Other Non-Indexed Citations <January 19, 2015>, Ovid
 MEDLINE(R) Daily Update < January 19, 2015>
 Search Strategy:

-
- 1 Pregnancy/ ()
 - 2 Pregnant women/ ()
 - 3 Prenatal care/ ()
 - 4 Perinatal care/ ()
 - 5 Postnatal care/ ()
 - 6 Postpartum period/ ()
 - 7 Peripartum period/ ()
 - 8 Maternal Health Services/ ()
 - 9 Puerperal Disorders/ ()
 - 10 pregnan\$.ti,ab. ()
 - 11 prenatal.ti,ab. ()
 - 12 pre natal.ti,ab. ()
 - 13 perinatal.ti,ab. ()
 - 14 peri natal.ti,ab. ()
 - 15 antenatal.ti,ab. ()

16 ante natal.ti,ab. ()
17 antepartum.ti,ab. ()
18 ante partum.ti,ab. ()
19 postnatal.ti,ab. ()
20 post natal.ti,ab. ()
21 postpartum.ti,ab. ()
22 post partum.ti,ab. ()
23 new mother\$.ti,ab. ()
24 puerperal.ti,ab. ()
25 1 or 2 or 3 or 4 or 5 or 6 or 7 or 8 or 9 or 10 or 11 or 12 or 13 or 14 or 15 or 16 or 17 or 18 or
19 or 20 or 21 or 22 or 23 or 24 ()
26 Depression/ ()
27 Depressive Disorder/ ()
28 Depressive Disorder, Major/ ()
29 Dysthymic Disorder/ ()
30 Anxiety/ ()
31 depress\$.ti,ab. ()
32 dysthym\$.ti,ab. ()
33 (anxiety or anxious).ti,ab. ()
34 blues.ti,ab. ()
35 26 or 27 or 28 or 29 or 30 or 31 or 32 or 33 or 34 ()
36 25 and 35 ()
37 Depression, Postpartum/ ()
38 36 or 37 ()
39 Psychotherapy/ ()
40 Psychotherapy, Brief/ ()
41 Psychotherapy, Group/ ()
42 Behavior Therapy/ ()
43 Cognitive Therapy/ ()
44 Counseling/ ()
45 Directive Counseling/ ()
46 Nondirective Therapy/ ()
47 Problem Solving/ ()
48 psychotherap\$.ti,ab. ()
49 (psychological adj5 (therap\$ or treatment\$ or intervention\$)).ti,ab. ()
50 (psychosocial adj5 (therap\$ or treatment\$ or intervention\$)).ti,ab. ()
51 (behavi\$ adj5 (therap\$ or treatment\$ or intervention\$)).ti,ab. ()
52 (cognitive adj5 (therap\$ or treatment\$ or intervention\$)).ti,ab. ()
53 cbt.ti,ab. ()
54 (psychodynamic adj5 (therap\$ or treatment\$ or intervention\$)).ti,ab. ()
55 (nondirective adj5 (therap\$ or treatment\$ or intervention\$)).ti,ab. ()
56 (non directive adj5 (therap\$ or treatment\$ or intervention\$)).ti,ab. ()
57 interpersonal therap\$.ti,ab. ()
58 interpersonal psychotherap\$.ti,ab. ()
59 interpersonal intervention\$.ti,ab. ()
60 supportive therap\$.ti,ab. ()

- 61 group therap\$.ti,ab. ()
- 62 counsel\$.ti,ab. ()
- 63 problem solving.ti,ab. ()
- 64 39 or 40 or 41 or 42 or 43 or 44 or 45 or 46 or 47 or 48 or 49 or 50 or 51 or 52 or 53 or 54 or 55 or 56 or 57 or 58 or 59 or 60 or 61 or 62 or 63 ()
- 65 38 and 64 ()
- 66 clinical trials as topic/ or controlled clinical trials as topic/ or randomized controlled trials as topic/ or meta-analysis as topic/ ()
- 67 (clinical trial or controlled clinical trial or meta analysis or randomized controlled trial).pt. ()
- 68 (random\$ or placebo\$).ti,ab. ()
- 69 control groups/ or double-blind method/ or single-blind method/ ()
- 70 clinical trial\$.ti,ab. ()
- 71 controlled trial\$.ti,ab. ()
- 72 (meta analy\$ or metaanaly\$).ti,ab. ()
- 73 66 or 67 or 68 or 69 or 70 or 71 or 72 ()
- 74 65 and 73 ()
- 75 limit 74 to (english language and yr="2012 -Current") ()

Pregnant and postpartum women – collaborative care

Database: Ovid MEDLINE(R) without Revisions <1996 to January Week 2 2015>, Ovid MEDLINE(R) In-Process & Other Non-Indexed Citations < January 19, 2015>, Ovid MEDLINE(R) Daily Update < January 19, 2015>

Search Strategy:

-
- 1 Pregnancy/ ()
 - 2 Pregnant women/ ()
 - 3 Prenatal care/ ()
 - 4 Perinatal care/ ()
 - 5 Postnatal care/ ()
 - 6 Postpartum period/ ()
 - 7 Peripartum period/ ()
 - 8 Maternal Health Services/ ()
 - 9 Puerperal Disorders/ ()
 - 10 pregnan\$.ti,ab. ()
 - 11 prenatal.ti,ab. ()
 - 12 pre natal.ti,ab. ()
 - 13 perinatal.ti,ab. ()
 - 14 peri natal.ti,ab. ()
 - 15 antenatal.ti,ab. ()
 - 16 ante natal.ti,ab. ()
 - 17 antepartum.ti,ab. ()
 - 18 ante partum.ti,ab. ()
 - 19 postnatal.ti,ab. ()
 - 20 post natal.ti,ab. ()
 - 21 postpartum.ti,ab. ()

22 post partum.ti,ab. ()
23 new mother\$.ti,ab. ()
24 puerperal.ti,ab. ()
25 1 or 2 or 3 or 4 or 5 or 6 or 7 or 8 or 9 or 10 or 11 or 12 or 13 or 14 or 15 or 16 or 17 or 18 or
19 or 20 or 21 or 22 or 23 or 24 ()
26 Depression/ ()
27 Depressive Disorder/ ()
28 Depressive Disorder, Major/ ()
29 Dysthymic Disorder/ ()
30 Anxiety/ ()
31 depress\$.ti,ab. ()
32 dysthym\$.ti,ab. ()
33 (anxiety or anxious).ti,ab. ()
34 blues.ti,ab. ()
35 26 or 27 or 28 or 29 or 30 or 31 or 32 or 33 or 34 ()
36 25 and 35 ()
37 Depression, Postpartum/ ()
38 36 or 37 ()
39 Case management/ ()
40 Patient care team/ ()
41 Cooperative behavior/ ()
42 Community mental health services/ ()
43 Interprofessional Relations/ ()
44 Continuity of patient care/ ()
45 Patient-centered care/ ()
46 Patient care management/ ()
47 Delivery of Health Care, Integrated/ ()
48 collaborat\$.ti,ab. ()
49 interdisciplinary.ti,ab. ()
50 multidisciplinary.ti,ab. ()
51 (integrated adj5 (healthcare or care)).ti,ab. ()
52 care manag\$.ti,ab. ()
53 case manag\$.ti,ab. ()
54 cooperative care.ti,ab. ()
55 patient centered care.ti,ab. ()
56 39 or 40 or 41 or 42 or 43 or 44 or 45 or 46 or 47 or 48 or 49 or 50 or 51 or 52 or 53 or 54 or
55 ()
57 38 and 56 ()
58 Depression, Postpartum/dh, pc, rh, th [Diet Therapy, Prevention & Control, Rehabilitation,
Therapy] ()
59 57 or 58 ()
60 clinical trials as topic/ or controlled clinical trials as topic/ or randomized controlled trials as
topic/ or meta-analysis as topic/ ()
61 (clinical trial or controlled clinical trial or meta analysis or randomized controlled trial).pt. ()
62 (random\$ or placebo\$.ti,ab. ()
63 control groups/ or double-blind method/ or single-blind method/ ()

64 clinical trial\$.ti,ab. ()
65 controlled trial\$.ti,ab. ()
66 (meta analy\$ or metaanaly\$).ti,ab. ()
67 60 or 61 or 62 or 63 or 64 or 65 or 66 ()
68 59 and 67 ()
69 limit 68 to (english language and yr="2009 -Current") ()

PsycInfo

Adult population – screening

Database: PsycINFO <1806 to January Week 2 2015>
Search Strategy:

1 Major depression/ ()
2 Dysthymic disorder/ ()
3 depress\$.ti,ab,id. ()
4 dysthym\$.ti,ab,id. ()
5 1 or 2 or 3 or 4 ()
6 Screening/ ()
7 Health Screening/ ()
8 Screening Tests/ ()
9 Intake Interview/ ()
10 Symptom Checklists/ ()
11 Interviews/ ()
12 Questionnaires/ ()
13 Rating Scales/ ()
14 Psychological Screening Inventory/ ()
15 Psychodiagnostic Interview/ ()
16 General Health Questionnaire/ ()
17 Beck Depression Inventory/ ()
18 Zungs Self Rating Depression Scale/ ()
19 screen\$.ti,ab,id. ()
20 casefinding.ti,ab,id. ()
21 case finding.ti,ab,id. ()
22 (diagnos\$ or detect\$ or identif\$).ti. ()
23 6 or 7 or 8 or 9 or 10 or 11 or 12 or 13 or 14 or 15 or 16 or 17 or 18 or 19 or 20 or 21 or 22 ()
24 5 and 23 ()
25 random\$.ti,ab,id,hw. ()
26 placebo\$.ti,ab,hw,id. ()
27 controlled trial\$.ti,ab,id,hw. ()
28 clinical trial\$.ti,ab,id,hw. ()
29 meta analy\$.ti,ab,hw,id. ()
30 metaanaly\$.ti,ab,hw,id. ()
31 treatment outcome clinical trial.md. ()
32 25 or 26 or 27 or 28 or 29 or 30 or 31 ()

33 24 and 32 ()
34 limit 33 to (100 childhood <birth to age 12 yrs> or 120 neonatal <birth to age 1 mo> or 140 infancy <2 to 23 mo> or 160 preschool age <age 2 to 5 yrs> or 180 school age <age 6 to 12 yrs> or 200 adolescence <age 13 to 17 yrs>) ()
35 limit 33 to "300 adulthood <age 18 yrs and older>" ()
36 34 not 35 ()
37 33 not 36 ()
38 limit 37 to (english language and yr="2009 -Current") ()

PsycInfo

Pregnant and postpartum women – screening and test performance

Database: PsycINFO <1806 to January Week 2 2015>

Search Strategy:

1 Pregnancy/ ()
2 Expectant Mothers/ ()
3 Prenatal Care/ ()
4 Perinatal Period/ ()
5 Postnatal Period/ ()
6 Mother Child Relations/ ()
7 pregnan\$.ti,ab,id. ()
8 prenatal.ti,ab,id. ()
9 pre natal.ti,ab,id. ()
10 perinatal.ti,ab,id. ()
11 peri natal.ti,ab,id. ()
12 antenatal.ti,ab,id. ()
13 ante natal.ti,ab,id. ()
14 antepartum.ti,ab,id. ()
15 ante partum.ti,ab,id. ()
16 postnatal.ti,ab,id. ()
17 post natal.ti,ab,id. ()
18 postpartum.ti,ab,id. ()
19 post partum.ti,ab,id. ()
20 new mother\$.ti,ab,id. ()
21 puerperal.ti,ab,id. ()
22 1 or 2 or 3 or 4 or 5 or 6 or 7 or 8 or 9 or 10 or 11 or 12 or 13 or 14 or 15 or 16 or 17 or 18 or 19 or 20 or 21 ()
23 Major Depression/ ()
24 Dysthymic disorder/ ()
25 Anxiety/ ()
26 depress\$.ti,ab,id. ()
27 dysthym\$.ti,ab,id. ()
28 (anxiety or anxious).ti,ab,id. ()
29 blues.ti,ab,id. ()

30 23 or 24 or 25 or 26 or 27 or 28 or 29 ()
31 22 and 30 ()
32 Postpartum Depression/ ()
33 Postpartum Psychosis/ ()
34 31 or 32 or 33 ()
35 Screening/ ()
36 Health Screening/ ()
37 Screening Tests/ ()
38 Intake Interview/ ()
39 Symptom Checklists/ ()
40 Interviews/ ()
41 Questionnaires/ ()
42 Rating Scales/ ()
43 Psychological Screening Inventory/ ()
44 Psychodiagnostic Interview/ ()
45 Self Report/ ()
46 General Health Questionnaire/ ()
47 Beck Depression Inventory/ ()
48 Zungs Self Rating Depression Scale/ ()
49 screen\$.ti,ab,id. ()
50 casefinding.ti,ab,id. ()
51 case finding.ti,ab,id. ()
52 self report\$.ti,ab,id. ()
53 (depress\$ adj5 (scale\$ or inventor\$ or questionnaire\$ or survey\$ or index\$ or checklist\$ or interview\$)).ti,ab,id. ()
54 Patient Health Questionnaire.ti,ab,id. ()
55 PHQ-2.ti,ab,id. ()
56 PHQ-9.ti,ab,id. ()
57 "Hospital Anxiety and Depression Scale".ti,ab,id. ()
58 Geriatric Depression Scale.ti,ab,id. ()
59 Beck Depression Inventory.ti,ab,id. ()
60 Center for Epidemiologic Studies Depression Scale.ti,ab,id. ()
61 Hamilton Depression Rating Scale.ti,ab,id. ()
62 Hamilton Rating Scale for Depression.ti,ab,id. ()
63 Montgomery-Asberg Depression Rating Scale.ti,ab,id. ()
64 Zung Self-Rating Depression Scale.ti,ab,id. ()
65 Quick Inventory of Depressive Symptoms.ti,ab,id. ()
66 Mini-Neuropsychiatric Interview.ti,ab,id. ()
67 Composite International Diagnostic Interview.ti,ab,id. ()
68 Primary Care Evaluation of Mental Disorders.ti,ab,id. ()
69 PRIME-MD.ti,ab,id. ()
70 Center for Epidemiologic Studies Depression Scale.ti,ab,id. ()
71 CES-D.ti,ab,id. ()
72 General Health Questionnaire.ti,ab,id. ()
73 GHQ-D.ti,ab,id. ()
74 Generalized Contentment Scale.ti,ab,id. ()

75 Edinburgh Postpartum Depression Scale.ti,ab,id. ()
76 EPDS.ti,ab,id. ()
77 Bromley Postnatal Depression Scale.ti,ab,id. ()
78 Postpartum Depression Screening Scale.ti,ab,id. ()
79 PDSS.ti,ab,id. ()
80 Leverton Questionnaire.ti,ab,id. ()
81 Postpartum Depression Predictors Inventory.ti,ab,id. ()
82 PDPI\$.ti,ab,id. ()
83 35 or 36 or 37 or 38 or 39 or 40 or 41 or 42 or 43 or 44 or 45 or 46 or 47 or 48 or 49 or 50 or
51 or 52 or 53 or 54 or 55 or 56 or 57 or 58 or 59 or 60 or 61 or 62 or 63 or 64 or 65 or 66 or 67
or 68 or 69 or 70 or 71 or 72 or 73 or 74 or 75 or 76 or 77 or 78 or 79 or 80 or 81 or 82 ()
84 34 and 83 ()
85 random\$.ti,ab,id,hw. ()
86 placebo\$.ti,ab,hw,id. ()
87 controlled trial\$.ti,ab,id,hw. ()
88 clinical trial\$.ti,ab,id,hw. ()
89 meta analy\$.ti,ab,hw,id. ()
90 metaanaly\$.ti,ab,hw,id. ()
91 treatment outcome clinical trial.md. ()
92 85 or 86 or 87 or 88 or 89 or 90 or 91 ()
93 84 and 92 ()
94 limit 93 to (english language and yr="2012 -Current") ()
95 ROC curve/ ()
96 Psychometrics/ ()
97 Test Validity/ ()
98 Interrater Reliability/ ()
99 validity.ti,ab,id. ()
100 reliability.ti,ab,id. ()
101 psychometrics.ti,ab,id. ()
102 Receiver operat\$.ti,ab,id. ()
103 ROC curve\$.ti,ab,id. ()
104 sensitivit\$.ti,ab,id. ()
105 specificit\$.ti,ab,id. ()
106 predictive value.ti,ab,id. ()
107 accuracy.ti,ab,id. ()
108 false positive\$.ti,ab,id. ()
109 false negative\$.ti,ab,id. ()
110 miss rate\$.ti,ab,id. ()
111 error rate\$.ti,ab,id. ()
112 95 or 96 or 97 or 98 or 99 or 100 or 101 or 102 or 103 or 104 or 105 or 106 or 107 or 108 or
109 or 110 or 111 ()
113 84 and 112 ()
114 limit 113 to (english language and yr="2012 -Current") ()
115 94 or 114 ()

Pregnant and postpartum women – drug treatment

Database: PsycINFO <1806 to January Week 2 2015>

Search Strategy:

-
- 1 Pregnancy/ ()
 - 2 Expectant Mothers/ ()
 - 3 Prenatal Care/ ()
 - 4 Perinatal Period/ ()
 - 5 Postnatal Period/ ()
 - 6 Mother Child Relations/ ()
 - 7 pregnan\$.ti,ab,id. ()
 - 8 prenatal.ti,ab,id. ()
 - 9 pre natal.ti,ab,id. ()
 - 10 perinatal.ti,ab,id. ()
 - 11 peri natal.ti,ab,id. ()
 - 12 antenatal.ti,ab,id. ()
 - 13 ante natal.ti,ab,id. ()
 - 14 antepartum.ti,ab,id. ()
 - 15 ante partum.ti,ab,id. ()
 - 16 postnatal.ti,ab,id. ()
 - 17 post natal.ti,ab,id. ()
 - 18 postpartum.ti,ab,id. ()
 - 19 post partum.ti,ab,id. ()
 - 20 new mother\$.ti,ab,id. ()
 - 21 puerperal.ti,ab,id. ()
 - 22 1 or 2 or 3 or 4 or 5 or 6 or 7 or 8 or 9 or 10 or 11 or 12 or 13 or 14 or 15 or 16 or 17 or 18 or 19 or 20 or 21 ()
 - 23 Major Depression/ ()
 - 24 Dysthymic disorder/ ()
 - 25 Anxiety/ ()
 - 26 depress\$.ti,ab,id. ()
 - 27 dysthym\$.ti,ab,id. ()
 - 28 (anxiety or anxious).ti,ab,id. ()
 - 29 blues.ti,ab,id. ()
 - 30 23 or 24 or 25 or 26 or 27 or 28 or 29 ()
 - 31 22 and 30 ()
 - 32 Postpartum Depression/ ()
 - 33 Postpartum Psychosis/ ()
 - 34 31 or 32 or 33 ()
 - 35 Drug Therapy/ ()
 - 36 Antidepressant Drugs/ ()
 - 37 Serotonin Reuptake Inhibitors/ ()
 - 38 Serotonin Norepinephrine Reuptake Inhibitors/ ()
 - 39 Neurotransmitter Uptake Inhibitors/ ()
 - 40 Bupropion/ ()

41 Citalopram/ ()
42 Fluoxetine/ ()
43 Fluvoxamine/ ()
44 Nefazodone/ ()
45 Paroxetine/ ()
46 Sertraline/ ()
47 Trazodone/ ()
48 Venlafaxine/ ()
49 (antidepress\$ or anti depress\$).ti,ab,id. ()
50 pharmacotherap\$.ti,ab,id. ()
51 (psychotropic adj (drug\$ or agent\$ or medicat\$ or medicine\$)).ti,ab,id. ()
52 Serotonin\$ Uptake Inhib\$.ti,ab,id. ()
53 Serotonin\$ Re uptake Inhib\$.ti,ab,id. ()
54 Serotonin\$ Reuptake Inhib\$.ti,ab,id. ()
55 (serotonergic adj (drug\$ or agent\$ or medicat\$)).ti,ab,id. ()
56 SSRI\$.ti,ab,id. ()
57 SNRI\$.ti,ab,id. ()
58 Neurotransmitter Uptake Inhib\$.ti,ab,id. ()
59 Neurotransmitter Re uptake Inhib\$.ti,ab,id. ()
60 Neurotransmitter Reuptake Inhib\$.ti,ab,id. ()
61 Adrenergic Uptake Inhib\$.ti,ab,id. ()
62 Adrenergic Re uptake Inhib\$.ti,ab,id. ()
63 Adrenergic Reuptake Inhib\$.ti,ab,id. ()
64 Norepinephrine Uptake Inhib\$.ti,ab,id. ()
65 Norepinephrine Re uptake Inhib\$.ti,ab,id. ()
66 Norepinephrine Reuptake Inhib\$.ti,ab,id. ()
67 Dopamine Uptake Inhib\$.ti,ab,id. ()
68 Dopamine Re uptake Inhib\$.ti,ab,id. ()
69 Dopamine Reuptake Inhib\$.ti,ab,id. ()
70 Bupropion.ti,ab,id. ()
71 Celexa.ti,ab,id. ()
72 Citalopram.ti,ab,id. ()
73 Cymbalta.ti,ab,id. ()
74 Desvenlafaxine.ti,ab,id. ()
75 Duloxetine.ti,ab,id. ()
76 Effexor.ti,ab,id. ()
77 Escitalopram.ti,ab,id. ()
78 Fluoxetine.ti,ab,id. ()
79 Fluvoxamine.ti,ab,id. ()
80 Lexapro.ti,ab,id. ()
81 Mirtazapine.ti,ab,id. ()
82 Nefazodone.ti,ab,id. ()
83 Paroxetine.ti,ab,id. ()
84 Paxil.ti,ab,id. ()
85 Pexeva.ti,ab,id. ()
86 Pristiq.ti,ab,id. ()

87 Prozac.ti,ab,id. ()
88 Remeron.ti,ab,id. ()
89 Sertraline.ti,ab,id. ()
90 Trazadone.ti,ab,id. ()
91 Venlafaxine.ti,ab,id. ()
92 Wellbutrin.ti,ab,id. ()
93 Zoloft.ti,ab,id. ()
94 35 or 36 or 37 or 38 or 39 or 40 or 41 or 42 or 43 or 44 or 45 or 46 or 47 or 48 or 49 or 50 or
51 or 52 or 53 or 54 or 55 or 56 or 57 or 58 or 59 or 60 or 61 or 62 or 63 or 64 or 65 or 66 or 67
or 68 or 69 or 70 or 71 or 72 or 73 or 74 or 75 or 76 or 77 or 78 or 79 or 80 or 81 or 82 or 83 or
84 or 85 or 86 or 87 or 88 or 89 or 90 or 91 or 92 or 93 ()
95 34 and 94 ()
96 limit 95 to animal ()
97 limit 95 to human ()
98 96 not 97 ()
99 95 not 98 ()
100 limit 99 to (english language and yr="2012 -Current") ()

Pregnancy/post-partum – psychotherapy treatment

Database: PsycINFO <1806 to January Week 2 2015>

Search Strategy:

1 Pregnancy/ ()
2 Expectant Mothers/ ()
3 Prenatal Care/ ()
4 Perinatal Period/ ()
5 Postnatal Period/ ()
6 Mother Child Relations/ ()
7 pregnan\$.ti,ab,id. ()
8 prenatal.ti,ab,id. ()
9 pre natal.ti,ab,id. ()
10 perinatal.ti,ab,id. ()
11 peri natal.ti,ab,id. ()
12 antenatal.ti,ab,id. ()
13 ante natal.ti,ab,id. ()
14 antepartum.ti,ab,id. ()
15 ante partum.ti,ab,id. ()
16 postnatal.ti,ab,id. ()
17 post natal.ti,ab,id. ()
18 postpartum.ti,ab,id. ()
19 post partum.ti,ab,id. ()
20 new mother\$.ti,ab,id. ()
21 puerperal.ti,ab,id. ()
22 1 or 2 or 3 or 4 or 5 or 6 or 7 or 8 or 9 or 10 or 11 or 12 or 13 or 14 or 15 or 16 or 17 or 18 or
19 or 20 or 21 ()

23 Major Depression/ ()
 24 Dysthymic disorder/ ()
 25 Anxiety/ ()
 26 depress\$.ti,ab,id. ()
 27 dysthym\$.ti,ab,id. ()
 28 (anxiety or anxious).ti,ab,id. ()
 29 blues.ti,ab,id. ()
 30 23 or 24 or 25 or 26 or 27 or 28 or 29 ()
 31 22 and 30 ()
 32 Postpartum Depression/ ()
 33 Postpartum Psychosis/ ()
 34 31 or 32 or 33 ()
 35 Psychotherapy.hw. ()
 36 Counseling.hw. ()
 37 Therapy.hw. ()
 38 Behavior Therapy/ ()
 39 Cognitive Therapy/ ()
 40 Cognitive Behavior Therapy/ ()
 41 Cognitive Restructuring/ ()
 42 Problem Solving/ ()
 43 psychotherap\$.ti,ab,id. ()
 44 (psychological adj5 (therap\$ or treatment\$ or intervention\$)).ti,ab,id. ()
 45 (psychosocial adj5 (therap\$ or treatment\$ or intervention\$)).ti,ab,id. ()
 46 (behavi\$ adj5 (therap\$ or treatment\$ or intervention\$)).ti,ab,id. ()
 47 (cognitive adj5 (therap\$ or treatment\$ or intervention\$)).ti,ab,id. ()
 48 cbt.ti,ab,id. ()
 49 (psychodynamic adj5 (therap\$ or treatment\$ or intervention\$)).ti,ab. ()
 50 (nondirective adj5 (therap\$ or treatment\$ or intervention\$)).ti,ab,id. ()
 51 (non directive adj5 (therap\$ or treatment\$ or intervention\$)).ti,ab,id. ()
 52 interpersonal therap\$.ti,ab,id. ()
 53 interpersonal psychotherap\$.ti,ab,id. ()
 54 interpersonal intervention\$.ti,ab,id. ()
 55 supportive therap\$.ti,ab,id. ()
 56 group therap\$.ti,ab,id. ()
 57 counsel\$.ti,ab,id. ()
 58 problem solving.ti,ab,id. ()
 59 35 or 36 or 37 or 38 or 39 or 40 or 41 or 42 or 43 or 44 or 45 or 46 or 47 or 48 or 49 or 50 or
 51 or 52 or 53 or 54 or 55 or 56 or 57 or 58 ()
 60 34 and 59 ()
 61 random\$.ti,ab,id,hw. ()
 62 placebo\$.ti,ab,hw,id. ()
 63 controlled trial\$.ti,ab,id,hw. ()
 64 clinical trial\$.ti,ab,id,hw. ()
 65 meta analy\$.ti,ab,hw,id. ()
 66 treatment outcome clinical trial.md. ()
 67 61 or 62 or 63 or 64 or 65 or 66 ()

68 60 and 67 ()
69 limit 68 to (english language and yr="2012 -Current") ()

Pregnancy/post-partum – collaborative care

Database: PsycINFO <1806 to January Week 2 2015>

Search Strategy:

1 Pregnancy/ ()
2 Expectant Mothers/ ()
3 Prenatal Care/ ()
4 Perinatal Period/ ()
5 Postnatal Period/ ()
6 Mother Child Relations/ ()
7 pregnan\$.ti,ab,id. ()
8 prenatal.ti,ab,id. ()
9 pre natal.ti,ab,id. ()
10 perinatal.ti,ab,id. ()
11 peri natal.ti,ab,id. ()
12 antenatal.ti,ab,id. ()
13 ante natal.ti,ab,id. ()
14 antepartum.ti,ab,id. ()
15 ante partum.ti,ab,id. ()
16 postnatal.ti,ab,id. ()
17 post natal.ti,ab,id. ()
18 postpartum.ti,ab,id. ()
19 post partum.ti,ab,id. ()
20 new mother\$.ti,ab,id. ()
21 puerperal.ti,ab,id. ()
22 1 or 2 or 3 or 4 or 5 or 6 or 7 or 8 or 9 or 10 or 11 or 12 or 13 or 14 or 15 or 16 or 17 or 18 or 19 or 20 or 21 ()
23 Major Depression/ ()
24 Dysthymic disorder/ ()
25 Anxiety/ ()
26 depress\$.ti,ab,id. ()
27 dysthym\$.ti,ab,id. ()
28 (anxiety or anxious).ti,ab,id. ()
29 blues.ti,ab,id. ()
30 23 or 24 or 25 or 26 or 27 or 28 or 29 ()
31 22 and 30 ()
32 Postpartum Depression/ ()
33 Postpartum Psychosis/ ()
34 31 or 32 or 33 ()
35 Interdisciplinary Treatment Approach/ ()
36 Integrated Services/ ()
37 Collaboration/ ()

38 Cooperation/ ()
 39 Case Management/ ()
 40 Work Teams/ ()
 41 Community Mental Health Services/ ()
 42 Health Care Delivery/ ()
 43 Community Psychology/ ()
 44 Community Psychiatry/ ()
 45 collaborat\$.ti,ab,id. ()
 46 interdisciplinary.ti,ab,id. ()
 47 multidisciplinary.ti,ab,id. ()
 48 (integrated adj5 (healthcare or care)).ti,ab,id. ()
 49 care manag\$.ti,ab,id. ()
 50 case manag\$.ti,ab,id. ()
 51 cooperative care.ti,ab,id. ()
 52 patient centered care.ti,ab,id. ()
 53 35 or 36 or 37 or 38 or 39 or 40 or 41 or 42 or 43 or 44 or 45 or 46 or 48 or 49 or 50 or 51 or 52 ()
 54 34 and 53 ()
 55 random\$.ti,ab,id,hw. ()
 56 placebo\$.ti,ab,hw,id. ()
 57 controlled trial\$.ti,ab,id,hw. ()
 58 clinical trial\$.ti,ab,id,hw. ()
 59 meta analy\$.ti,ab,hw,id. ()
 60 metaanaly\$.ti,ab,hw,id. ()
 61 treatment outcome clinical trial.md. ()
 62 55 or 56 or 57 or 58 or 59 or 60 or 61 ()
 63 54 and 62 ()
 64 limit 63 to (english language and yr="2009 -Current") ()

PubMed, publisher-supplied

General adult population

#5 Search #1 AND (#2 OR #3) AND #4 AND publisher[*sb*] AND English[*Language*] AND ("2009"[*Date - Publication*] : "2015"[*Date - Publication*])
 #4 Search random*[*tiab*] OR placebo*[*tiab*] OR trial[*tiab*] OR trials[*tiab*] OR metaanaly*[*tiab*] OR "meta analysis"[*tiab*] OR "meta analyses"[*tiab*] OR "meta analytic"[*tiab*]
 #3 Search diagnos*[*title*] OR detect*[*title*] OR identif*[*title*]
 #2 Search screen*[*tiab*] OR casefinding[*tiab*] OR "case finding"[*tiab*]
 #1 Search depress*[*title*] OR dysthym*[*title*] OR mental[*title*] OR mood[*title*] OR psycholog*[*title*] OR psychiat*[*title*]

Pregnant/postpartum population

#9 Search #4 OR #6 OR #8

#8 Search #1 AND #2 AND #7 AND publisher[sb] AND English[Language] AND ("2012"[Date - Publication] : "2015"[Date - Publication])
 #7 Search treat*[tiab] OR therap*[tiab] OR antidepress*[tiab] OR pharmacotherap*[tiab] OR psychotropic*[tiab] OR drug*[tiab] OR medicat*[tiab] OR medicine*[tiab]
 #6 Search #1 AND #2 AND #5 AND publisher[sb] AND English[Language] AND "2012"[Date - Publication] : "2014"[Date - Publication]
 #5 Search screen*[tiab] OR casefinding[tiab] OR "case finding"[tiab] OR scale*[tiab] OR inventor*[tiab] OR questionnaire*[tiab] OR survey*[tiab] OR index*[tiab] OR checklist*[tiab] OR interview*[tiab] OR diagnos*[title] OR detect*[title] OR identif*[title]
 #4 Search #1 AND #2 AND #3 AND publisher[sb] AND English[Language] AND "2009"[Date - Publication] : "2014"[Date - Publication]
 #3 Search random*[tiab] OR placebo*[tiab] OR trial[tiab] OR trials[tiab] OR metaanaly*[tiab] OR "meta analysis"[tiab] OR "meta analyses"[tiab] OR "meta analytic"[tiab]
 #2 Search depress*[title] OR dysthym*[title] OR anxiety[title] OR anxious[title] OR blues[title] OR mental[title] OR mood[title] OR psycholog*[title] OR psychiat*[title]
 #1 Search pregnan*[title] OR prenatal[title] OR pre natal[title] OR perinatal[title] OR perinatal[title] OR antenatal[title] OR ante natal[title] OR antepartum[title] OR ante partum[title] OR postnatal[title] OR post natal[title] OR postpartum[title] OR post partum[title] OR mother*[title] OR maternal[title] OR puerperal[title]

Cochrane Central Register of Controlled Trials : Issue 5 of 19, January 2015

Adult population – Screening

- #1 (depress* or dysthym*):ti,ab,kw
- #2 screen*:ti,ab,kw
- #3 (casefinding or "case finding"):ti,ab,kw
- #4 (detect* or identif*):ti,ab,kw
- #5 diagnos*:ti
- #6 #2 or #3 or #4 or #5
- #7 **#1 and #6 Publication Year from 2009 to 2015, in Trials**

Pregnant/postpartum population - screening

- #1 pregnan*:ti,ab,kw
- #2 prenatal:ti,ab,kw
- #3 pre natal:ti,ab,kw
- #4 perinatal:ti,ab,kw
- #5 peri natal:ti,ab,kw
- #6 antenatal:ti,ab,kw
- #7 ante natal:ti,ab,kw
- #8 antepartum:ti,ab,kw
- #9 ante partum:ti,ab,kw
- #10 postnatal:ti,ab,kw
- #11 post natal:ti,ab,kw
- #12 postpartum:ti,ab,kw

- #13 post partum:ti,ab,kw
- #14 (new next mother*):ti,ab,kw
- #15 puerperal:ti,ab,kw
- #16 or #1-#15
- #17 depress\$:ti,ab,kw
- #18 dysthym*:ti,ab,kw
- #19 (anxiety or anxious):ti,ab,kw
- #20 blues:ti,ab,kw
- #21 #17 or #18 or #19 or #20

- #22 #16 and #21 Publication Year from 2009 to 2015, in Trials**

eTable 1. Quality assessment criteria

Study Design	Adapted Quality Criteria
Randomized controlled trials, adapted from the U.S. Preventive Services Task Force methods ¹	<ul style="list-style-type: none"> • Valid random assignment? • Was allocation concealed? • Was eligibility criteria specified? • Were groups similar at baseline? • Was there a difference in attrition between groups? • Were outcome assessors blinded? • Were measurements equal, valid and reliable? • Was there intervention fidelity? • Was there risk of contamination? • Was there adequate adherence to the intervention? • Were the statistical methods acceptable? • Was the handling of missing data appropriate? • Was there acceptable followup? • Was there evidence of selective reporting of outcomes?
Observational studies (e.g., prospective cohort studies), adapted from the Newcastle-Ottawa Scale (NOS) ²	<ul style="list-style-type: none"> • Was there representativeness of the exposed cohort? • Was the non-exposed systematically selected? • Was the ascertainment of exposure reported? • Was eligibility criteria specified? • Were groups similar at baseline? • Was the outcome of interest not present at baseline? • Were measurements equal, valid and reliable? • Were outcome assessors blinded? • Was followup long enough for the outcome to occur? • Was there acceptable followup? • Was there adjustment for confounders? • Were the statistical methods acceptable? • Was the handling of missing data appropriate?
Diagnostic accuracy studies, adapted from the Quality Assessment of Diagnostic Accuracy Studies (QUADAS) II instrument ³	<ul style="list-style-type: none"> • Could the selection of patients have introduced bias? <ul style="list-style-type: none"> ○ Was a consecutive or random sample of patients enrolled? ○ Was a case-control design avoided? ○ Did the study avoid inappropriate exclusions? • Could the conduct or interpretation of the index test have introduced bias? <ul style="list-style-type: none"> ○ Was the index test interpreted without knowledge of the reference standard results? ○ If a threshold was use, was it pre-specified? ○ Was staff trained in the use of the index test? ○ Was the fidelity of the index test monitored and/or reported? • Could the conduct or interpretation of the reference standard have introduced bias? <ul style="list-style-type: none"> ○ Is the reference standard likely to correctly classify the target condition? ○ Was the reference standard interpreted without knowledge of the index test results? ○ Was staff trained in the assessment of the reference standard? ○ Was the fidelity of the reference test monitored and/or reported? • Could the patient flow have introduced bias? <ul style="list-style-type: none"> ○ Was there an appropriate interval between the index test and reference standard? ○ Did all patients receive the same reference standard? ○ Did the whole or partial selection of patients receive the reference standard? If so, was it adjusted? ○ Was the order of tests randomized among patients? ○ Did all participants complete both the index test and reference standard? ○ Were all patients included in the analysis?

Study Design	Adapted Quality Criteria
Assessment of Multiple Systematic Reviews (AMSTAR) ⁴	<ul style="list-style-type: none"> • Was an 'a priori' design provided? • Was there dual study selection? • Was there dual data extraction? • Was a comprehensive literature search performed? • Was a list of studies included provided? • Was a list of excluded studies provided? • Were the characteristics of the included studies provided? • Was the scientific quality of the included studies assessed and documented? • Was the scientific quality of the included studies used appropriately in formulating conclusions? • Were the methods used to combine the findings of studies appropriate? • Was the likelihood of publication bias assessed? • Were potential conflicts of interest/source(s) of support of the systematic review stated? • Were potential conflicts of interest/source(s) of support of the included studies stated?

Good quality studies generally meet all quality criteria. Fair quality studies do not meet all the criteria but do not have critical limitations that could invalidate study findings. Poor quality studies have a single fatal flaw or multiple important limitations that could invalidate study findings. Critical appraisal of studies using *a priori* quality criteria are conducted independently by at least two reviewers. Disagreements in final quality assessment are resolved by consensus, and, if needed, consultation with a third independent reviewer.

eTable 2. Summary of adjusted results of maternal and infant harms with second generation antidepressant use during pregnancy (Key Question 5)

Harm	AHRQ Review ⁵	Included Observational Studies	Conclusion
Serotonin syndrome	Not addressed	Not addressed	Not addressed
Cardiac effects	Not addressed	Not addressed	Not addressed
Seizures (bupropion only)	Not addressed	Not addressed	Not addressed
Suicidality	Insufficient evidence	Not addressed	Not addressed
Gestational diabetes and/or metabolic effects	Weight gain: insufficient evidence Other metabolic outcomes: not addressed	Not addressed	Not addressed
Preeclampsia	Not addressed	<p><u>Depressed Women</u> (Palmsten 2013a)⁶</p> <p>Increased risk</p> <ul style="list-style-type: none"> • Venlafaxine (n=1,113): RR, 1.57 (95% CI, 1.29 to 1.91) <p>No association: citalopram (n=1,680), escitalopram (n=1,936), fluoxetine (n=299), paroxetine (n=3,517), sertraline (n=7,143), duloxetine (n=NR), mirtazapine (n=253), trazodone (n=339)</p>	Possible association with venlafaxine

<p>Vaginal bleeding during pregnancy or postpartum hemorrhage</p>	<p><u>Depressed Women</u>: No evidence</p> <p><u>Unknown Depression Status</u> (k=1, n=26,403)</p> <p>Increased risk</p> <ul style="list-style-type: none"> • SSRIs <ul style="list-style-type: none"> • 60-day exposure (n=423): OR, 1.40 (95% CI, 1.04 to 1.88) • 180-day exposure (n=626): OR, 1.32 (95% CI, 1.03 to 1.70) <p>No association:</p> <ul style="list-style-type: none"> • SSRIs, 30-day exposure (n=310) or 90-day exposure (n=501) • Non-SSRIs, 30-day exposure (n=64), 60-day exposure (n=92), 90-day exposure (n=123), or 180-day exposure (n=167) 	<p><u>Depressed Women</u> (Palmsten 2013b)⁷</p> <p>Increased risk</p> <ul style="list-style-type: none"> • SSRI+venlafaxine, current (n=8,917): RR, 1.46 (95% CI, 1.29 to 1.65) • SSRI+venlafaxine, recent (n=4,344): RR, 1.28 (95% CI, 1.08 to 1.52) • Atypical antidepressant, current (n=1,012): RR, 1.52 (95% CI, 1.12 to 2.06) <p>No association</p> <ul style="list-style-type: none"> • SSRI+venlafaxine, past (n=7,432) • Atypical antidepressant, recent (n=616) • Atypical antidepressant, past (n=1460) <p><u>All women Control Group, controlling for depression status</u></p> <p>Increased risk (Palmsten 2013b)⁷</p> <ul style="list-style-type: none"> • Citalopram, current (n=891): RR, 1.48 (95% CI, 1.07 to 2.04) • Escitalopram, current (n=1,022): RR, 1.56 (95% CI, 1.16 to 2.09) • Fluoxetine, current (n=3,322): RR, 1.51 (95% CI, 1.27 to 1.79) • Paroxetine, current (n=2,055): RR, 1.36 (95% CI, 1.09 to 1.71); recent (n=962): adjusted RR, 1.52 (95% CI, 1.12 to 2.07) • Sertraline, current (n=4,526): RR, 1.31 (95% CI, 1.12 to 1.54); recent (n=2,266): RR, 1.27 (95% CI, 1.01 to 1.59) • Venlafaxine, current (n=763): RR, 2.24 (95% CI, 1.69 to 2.97) • Bupropion, past (n=1,666): RR, 1.33 (95% CI, 1.03 to 1.71) <p>No association: (Lupatelli 2014;⁸ Palmsten 2013b)⁷</p> <ul style="list-style-type: none"> • SSRI+SNRI, week 30 or later (n=122)⁸, second trimester (n=222)⁸, first trimester (n=427)⁸ • Mirtazapine, current (n=129) or past (n=135)⁷ • Trazodone, current (n=139), recent (n=73), or past (n=226)^{7,7} 	<p>Possible association with SSRIs and SNRIs</p>
---	---	---	--

<p>Miscarriage and/or spontaneous abortion</p>	<p><u>Depressed Women</u> (k=1, n=512,574) Increased risk</p> <ul style="list-style-type: none"> • SSRIs, first trimester (n=1,539): RR, 1.4 (99% CI, 1.2 to 1.7) <p><u>Unknown Depression Status</u> (k=1, n=5,124) Increased risk</p> <ul style="list-style-type: none"> • SSRIs (n=NR): OR, 1.60 (95% CI, 1.28 to 2.04) • Paroxetine (n=569): OR, 1.75 (95% CI, 1.31 to 2.34) • Venlafaxine (n=161): OR, 2.11 (95% CI, 1.34 to 3.30) <p>No association: citalopram (k=1, n=NR), fluvoxamine (k=1, n=NR), fluoxetine (k=1, n=NR), sertraline (k=1, n=NR).</p>	<p><u>Depression Women</u> (Kjaersgaard 2013)⁹ Increased risk</p> <ul style="list-style-type: none"> • Venlafaxine (n=NR): RR, 1.80^a (95% CI, 1.19 to 2.72) • Duloxetine (n=NR): RR, 3.12^a (95% CI, 1.55 to 6.31) • Mirtazapine (n=NR): RR, 2.23^a (95% CI, 1.34 to 3.70) <p>No association (n=NR for all): fluoxetine, citalopram, escitalopram, paroxetine, sertraline,</p> <p><u>Unknown Depression Status</u> (Andersen 2014)¹⁰ Increased risk (exposure during first 35 days of pregnancy)</p> <ul style="list-style-type: none"> • Citalopram (n=9,927): HR, 1.29 (95% CI, 1.21 to 1.27) • Escitalopram (n=2,377): HR, 1.25 (95% CI, 1.09 to 1.42) • Fluoxetine (n=4,111): HR, 1.10 (95% CI, 1.01 to 1.21) • Paroxetine (n=2,739): HR, 1.27 (95% CI, 1.14 to 1.42) • Sertraline (n=4,453): HR, 1.45 (95% CI, 1.33 to 1.58) • For all SSRIs above, risk was also increased with use ≥ 3 months pre-pregnancy (and discontinued ≥ 3 months before pregnancy) 	<p>Possible association with SNRIs, SSRIs in 1st trimester, particularly paroxetine</p>
--	---	---	--

<p>Neonatal or postneonatal death</p>	<p><u>Unknown Depression Status</u></p> <p>Increased risk</p> <p>Within first year of life (k=1, n=98,325):</p> <ul style="list-style-type: none"> • Escitalopram (n=NR): OR, 3.52 (95% CI, 1.30 to 9.49) • Fluvoxamine (n=NR): OR, 4.52 (95% CI, 1.44 to 14.24) • Paroxetine (n=NR): OR, 2.18 (95% CI, 1.03 to 4.61) <p>Within 28 days of birth (k=1, n=920,620):</p> <ul style="list-style-type: none"> • Citalopram (n=1,800): OR, 2.49 [1.33 to 4.65] <p>No association:</p> <ul style="list-style-type: none"> • Within first year of life: citalopram (n=NR), fluoxetine (n=NR), sertraline (n=NR) • Within 28 days of birth: escitalopram (n=NR), fluoxetine (n=NR), paroxetine (n=NR), sertraline (n=NR); 28-365 days after birth (k=2, n=NR): SSRIs as class 	<p>Not addressed</p>	<p>Possible association with SSRIs</p>
---------------------------------------	---	----------------------	--

<p>Pre-term birth or early gestational age</p>	<p><u>Depressed Women</u> No association: SSRIs (k=2, n=NR): pooled OR^a, 1.87 (95% CI, 0.89 to 3.89)</p> <p><u>Unknown Depression Status</u> Increased risk:</p> <ul style="list-style-type: none"> • SSRIs (k=11, n=NR, OR NR) • SSRIs in 1st trimester (k=1, n=NR): OR, 11.7 (95% CI, 2.2 to 60.70) • SSRIs in 3rd trimester (k=1, n=NR): OR, 2.46 (95% CI, 1.75 to 3.50) • Citalopram (k=4, n=NR): OR, NR • Escitalopram (k=4, n=NR): OR, NR • SNRIs, bupropion (k=2, n=NR): pooled OR, 1.79 (95% CI, 1.46 to 2.19), I²=NR <p>No association: fluoxetine (k=4, n=NR), paroxetine (k=8, n=NR), sertraline (k=2, n=NR)</p>	<p><u>Depressed Women: (Hayes 2012)¹¹</u> Increased risk:</p> <ul style="list-style-type: none"> • Any antidepressant (mostly SSRIs), % born gestational weeks 32-36: 1-2 prescriptions (n=10,700): OR 1.91^a, (95% CI, 1.77 to 2.07) 3+ prescriptions (n=6,196): OR 1.12^a, 95% CI, 1.03 to 1.23) <p><u>Unknown Depression Status in Control Group (Hayes 2012, N=228,876)¹¹</u> Increased risk:</p> <ul style="list-style-type: none"> • SSRIs in 2nd trimester (mean difference in days, n=NR for all, nulliparous women): <ul style="list-style-type: none"> ▪ 1 prescription: -2.6 (95% CI, -1.3 to -3.9) ▪ 2 prescriptions: -5.8 (95% CI, -3.8 to -7.8) ▪ 3+ prescriptions: -6.6 (95% CI, -4.6 to -8.6) <p>Decreased risk:</p> <ul style="list-style-type: none"> • SSRIs in 3rd trimester (mean difference in days, n=NR for all, nulliparous women): <ul style="list-style-type: none"> ▪ 1 prescription: 0.9 (95% CI, 0.3 to 1.6) ▪ 2 prescriptions: 1.8 (95% CI, 0.9 to 2.7) ▪ 3+ prescriptions: 6.4 (95% CI, 5.5 to 7.3) 	<p>Possible association with SSRIs in first two trimesters and SNRIs</p>
<p>Low birth weight or small for gestational age (SGA)</p>	<p><u>Depressed Women:</u> No evidence</p> <p><u>Depressed Women vs. Not Depressed ± No SSRI</u> Increased risk</p> <ul style="list-style-type: none"> • SSRIs: increased risk of smaller head circumference (k=1, n=5,502, n=NR): -5.9 mm (95% CI, -11.5 to -0.3) <p><u>Unknown Depression Status</u> No association with low birth weight: SSRIs:(k=5, n=NR)</p> <p>Insufficient evidence: SNRIs/NRIs</p>	<p><u>Depressed Women:</u> No evidence</p> <p><u>All Women, Controlling for Depression Status (Jensen 2013)¹²</u> Increased risk</p> <ul style="list-style-type: none"> • SSRIs during pregnancy (n=NR): HR, 1.22 (95% CI, 1.13 to 1.32) • 2nd generation non-SSRIs before pregnancy (n=NR): HR, 1.14 (95% CI, 1.05 to 1.24) <p>No association:</p> <ul style="list-style-type: none"> • SSRIs before pregnancy (n=NR), • 2nd generation non-SSRIs during pregnancy (n=NR) 	<p>Possible association with SSRIs</p>

Seizures or convulsions	<p><u>Depressed Women</u> No association:</p> <ul style="list-style-type: none"> • SSRIs (k=1, n=NR): 0.14% exposed vs. 0.09%, risk difference 0.0005 (95% CI, -0.0015 to 0.0025); RR^a, 1.56 (95% CI, NR) <p><u>Unknown Depression Status</u> Increased risk:</p> <ul style="list-style-type: none"> • SSRIs (k=7, n=NR): pooled OR^a, 4.11 (95% CI, 1.78 to 9.48, I²=NR) 	<p><u>Depressed Women: (Hayes 2012)¹¹</u> Increased risk:</p> <ul style="list-style-type: none"> • Any antidepressant (mostly SSRIs): 3+ prescriptions (n=6,196): OR 2.39^a, (95% CI, 1.57 to 3.64) <p>No association: 1-2 prescriptions (n=10,700)</p> <p><u>Unknown Depression Status in Control Group (Hayes 2012, N=228,876)¹¹</u> Increased risk:</p> <ul style="list-style-type: none"> • SSRIs 3rd trimester: 2 prescriptions (n=NR): OR, 2.8 (95% CI, 1.4 to 5.5); 3+ prescriptions (n=NR): OR, 4.9 (95% CI, 2.6 to 9.5) <p>No association</p> <ul style="list-style-type: none"> • SSRIs 3rd trimester, 1 prescription (n=NR) 	Possible association with SSRIs
Serotonin withdrawal (discontinuation) syndrome	<p><u>Depressed Women:</u> No evidence</p> <p><u>Unknown Depression Status</u> Increased risk:</p> <ul style="list-style-type: none"> • SSRI (k=1, n=120): increased risk of Finnegan severe score of ≥ 8 (13% vs. 0%, p=NR); increased risk of any symptoms of withdrawal (30% vs. 0%, p=NR) • Fluoxetine (k=1, n=482): increased risk of poor neonatal adaptation, RR, 8.7 (95% CI, 2.9 to 26.6) • SSRI or venlafaxine during 3rd trimester (k=1, n=166): increased risk of neonatal behavioral signs, OR, 3.1 (95% CI, 1.3 to 7.1) • SSRI or SNRI (k=1, n=56): increased risk of elevated Finnegan neonatal abstinence score (2 vs. 0, p<0.05) <p>No association: SSRIs as class (k=1, n=108)¹³</p>	Not addressed	Possible association with SSRIs and SNRIs

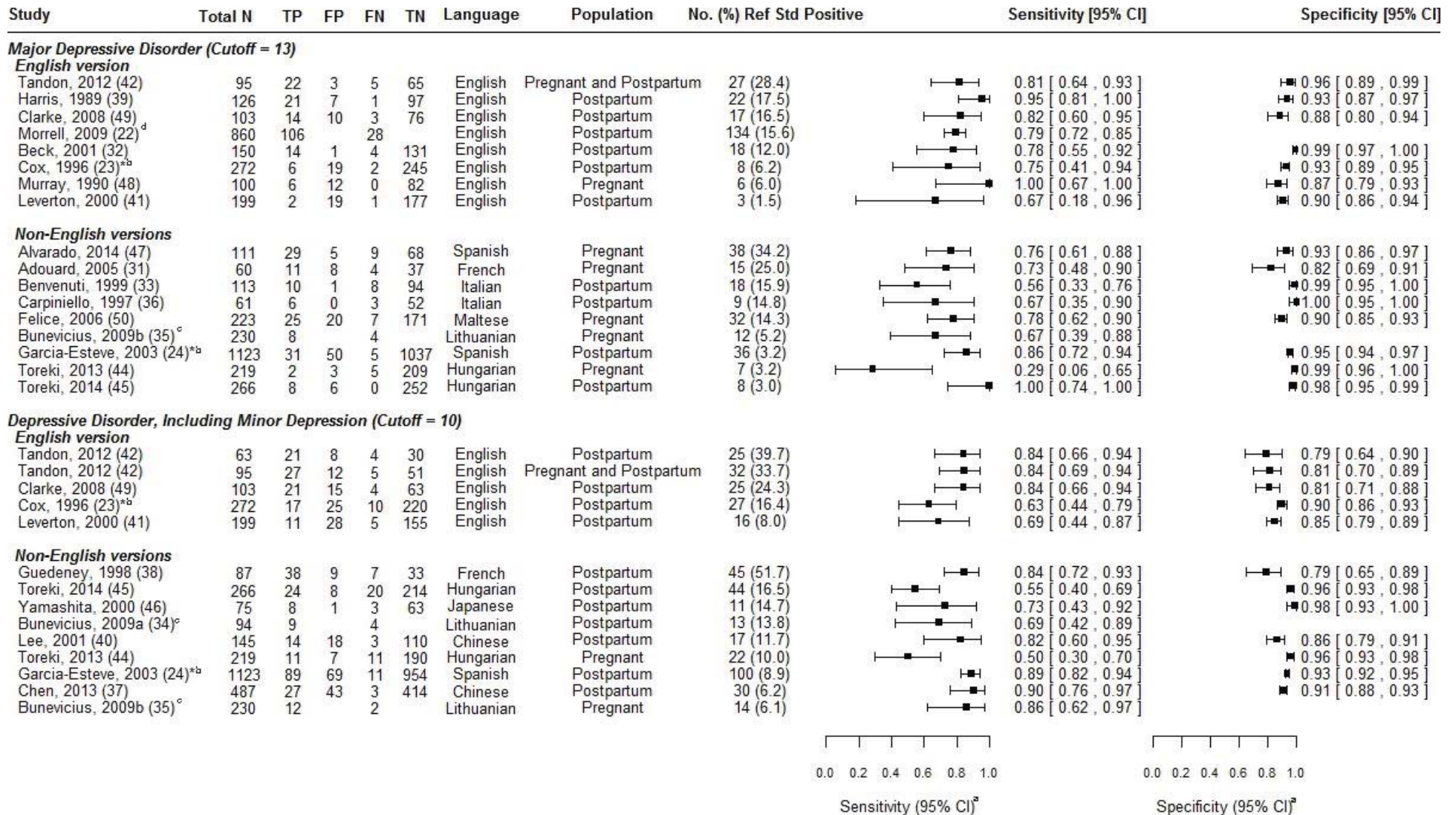
Neonatal respiratory distress	<p><u>Depressed Women</u> Increased risk:</p> <ul style="list-style-type: none"> • SSRIs (k=3, n=NR): pooled OR^a, 1.91 (95% CI, 1.63 to 2.24), I²=0% <p><u>Unknown Depression Status</u> Increased risk:</p> <ul style="list-style-type: none"> • SSRIs (k=4, n=748,658): pooled OR, 1.79 (95% CI, 1.64 to 1.97), I²=0% 	<p><u>Depressed Women: (Hayes 2012)¹¹</u> Increased risk:</p> <ul style="list-style-type: none"> • Any antidepressant (mostly SSRIs): 3+ prescriptions (n=6,196): OR 1.18^a, (95% CI, 1.04 to 1.35) <p>No association: 1-2 prescriptions (n=10,700)</p> <p><u>Unknown Depression Status in Control Group (Hayes 2012)¹¹</u> Increased risk:</p> <ul style="list-style-type: none"> • SSRIs, 2nd trimester: 2 prescriptions (n=NR): OR, 1.4 (95% CI, 1.1 to 1.8); 3+ prescriptions (n=NR): OR, 1.6 (95% CI, 1.2 to 2.0) <p>Decreased risk:</p> <ul style="list-style-type: none"> • SSRIs, 3rd trimester, 3+ prescriptions (n=NR): OR, 0.6 (95% CI, 0.5 to 0.8) <p>No association:</p> <ul style="list-style-type: none"> • SSRIs, 2nd trimester, 1 prescription (n=NR); 3rd trimester, 1 or 2 prescriptions (n=NR) 	Possible association with SSRIs
Pulmonary hypertension	<p><u>Unknown Depression Status</u> Increased risk:</p> <ul style="list-style-type: none"> • SSRIs <ul style="list-style-type: none"> ○ Any time during pregnancy (k=3, n=NR): pooled OR, 2.41 (95% CI, 1.47 to 3.95), I²=14% ○ Late exposure (generally ≥20 weeks) (k=3, n=NR): pooled OR, 2.72 (95% CI, 1.63 to 4.54), I²=14% <p>No association (but high heterogeneity in pooled estimate):</p> <ul style="list-style-type: none"> • SSRIs, early exposure (not defined) (k=4, n=NR) 	Not addressed	Possible association with SSRIs, particularly late in pregnancy

Major malformations	<p><u>Depressed Women</u> Insufficient evidence (k=3, n=NR)</p> <p><u>Unknown Depression Status</u> Increased risk:</p> <ul style="list-style-type: none"> • Fluoxetine (k=7, n=NR): pooled OR, 1.14 (95% CI, 1.01 to 1.30), $I^2=0\%$ • Paroxetine (k=8, n=NR): pooled OR, 1.17 (95% CI, 1.02 to 1.35), $I^2=0\%$ <p>No association: SSRIs (k=6, n=NR), citalopram or escitalopram (k=8, n=NR), fluvoxamine (k=2, n=NR), sertraline (k=7, n=NR)</p>	<p><u>Depressed Women</u> (Ban 2014; Yazdy)^{14;15}</p> <p>Increased risk (Yazdy 2014; n=2,624):</p> <ul style="list-style-type: none"> • SSRIs: increased risk of SSRI use in the 2nd or 3rd month of pregnancy for mothers of infants born with clubfoot: adjusted OR, 1.8 (95% CI, 1.1 to 2.8). • Escitalopram: increased risk of use in 2nd or 3rd month of pregnancy for mothers of infants born with clubfoot: adjusted OR, 2.9 (95% CI, 1.1 to 7.2) <p>No association: citalopram (n=1,946), escitalopram (n=333), fluoxetine (n=3,189), paroxetine (n=1,200), sertraline (n=757)</p>	Possible association with SSRIs
Cardiac malformations	<p><u>Depressed Women</u>: No evidence</p> <p><u>Unknown Depression Status</u> Increased risk:</p> <ul style="list-style-type: none"> • Paroxetine (k=5, n=NR): pooled OR, 1.45 (95% CI, 1.13 to 1.85), $I^2=0\%$ <p>No association: SSRIs (k=5, n=NR), citalopram or escitalopram (k=6, n=NR), fluoxetine (k=5, n=NR), fluvoxamine (k=3, n=NR), sertraline (k=4, n=NR)</p>	<p><u>Depressed Women</u> (Ban 2014;¹⁴ Huybrechts 2014¹⁶)</p> <p>Increased risk:</p> <ul style="list-style-type: none"> • Paroxetine in 1st trimester (n=1,200): adjusted OR, 1.67 (95% CI, 1.00 to 2.80)¹⁴ <p>No association: SSRIs (k=2; N=44,461), citalopram (n=1,946),¹⁴ escitalopram (n=333),¹⁴ fluoxetine (k=2; n=11,853),¹⁴ paroxetine (n=8,748),¹⁶ sertraline (k=2; n=11,813),¹⁶ SNRIs (n= 6,010),¹⁶ bupropion (n=8,748)¹⁶</p> <p><u>Unknown Depression Status</u> (Polen 2013; Louik 2014)^{17;18}</p> <p>Increased risk:</p> <ul style="list-style-type: none"> • Bupropion: Increased risk of bupropion use in 1st trimester for mothers of infants with ventricular septal defects (n=16,524): adjusted OR, 2.5 (95% CI, 1.3 to 5.0)¹⁸ • Venlafaxine: Increased risk of venlafaxine use pre- and in early pregnancy for mothers of infants with atrial septal defects: adjusted OR, 3.1 (95% CI, 1.3 to 7.4)¹⁷ 	Possible association with bupropion, paroxetine and venlafaxine

^aUnadjusted results

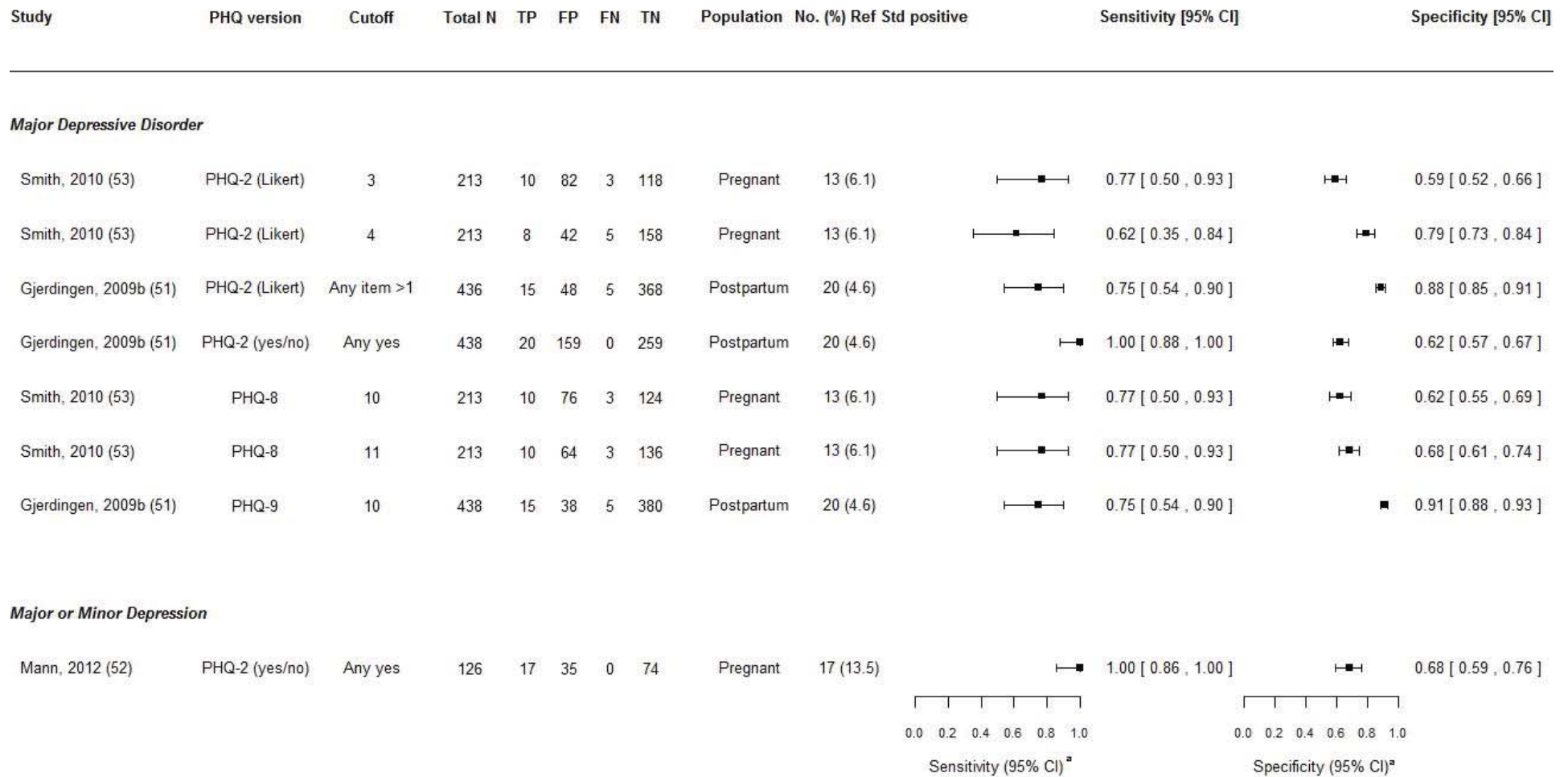
Abbreviations: AHRQ = Agency for Healthcare Research and Quality; CI = confidence interval; HR = hazard ratio; k = number of studies; NR = not reported; OR = odds ratio; RR = relative risk; SNRI = selective norepinephrine reuptake inhibitors; SSRI = selective serotonin reuptake inhibitors

eFigure 1. Diagnostic Accuracy of the Edinburgh Postnatal Depression Scale Relative to a Diagnostic Interview (Key Question 2)

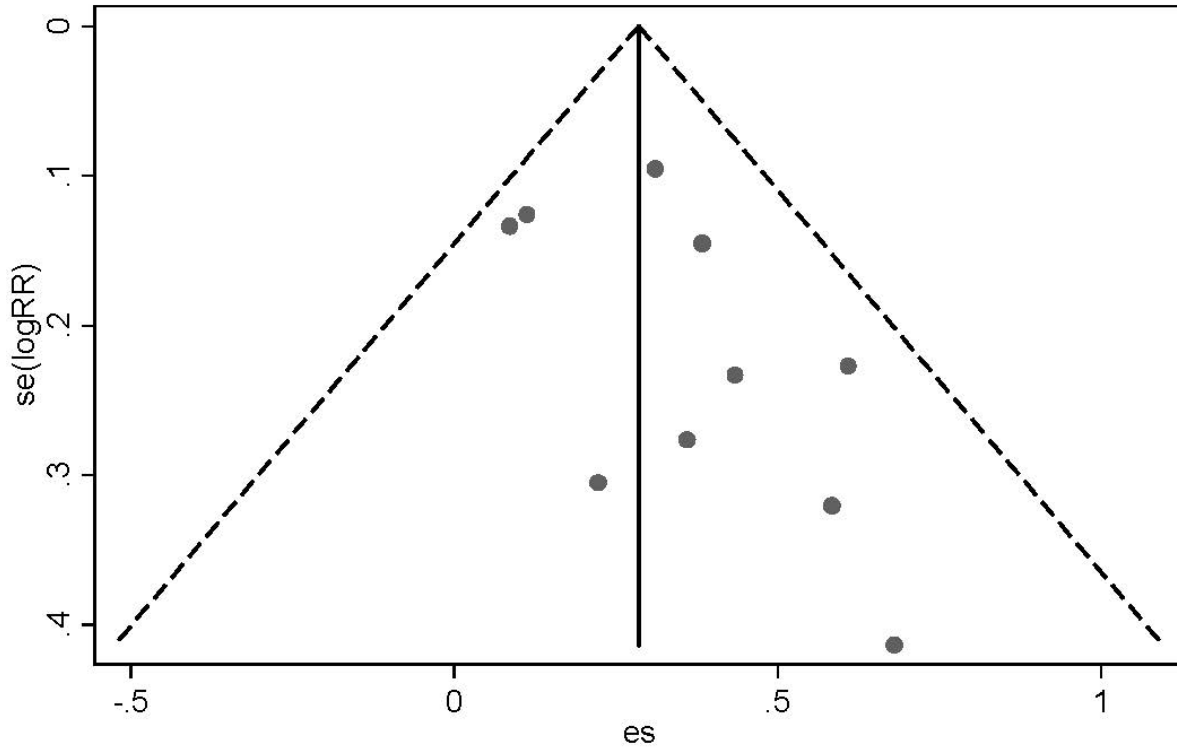


Error bars indicate 95% confidence interval. ^bData were extrapolated from partial verification. ^cBunevicius et al (2009a) and Bunevicius et al (2009b) did not report the number of false positives or true negatives; therefore, specificity could not be calculated. ^dMorrell et al (2009) did not report sufficient data to extrapolate the number of false positives and true negatives; therefore, specificity could not be calculated.

eFigure 2. Diagnostic Accuracy of the Patient Health Questionnaire Relative to a Diagnostic Interview (Key Question 2)

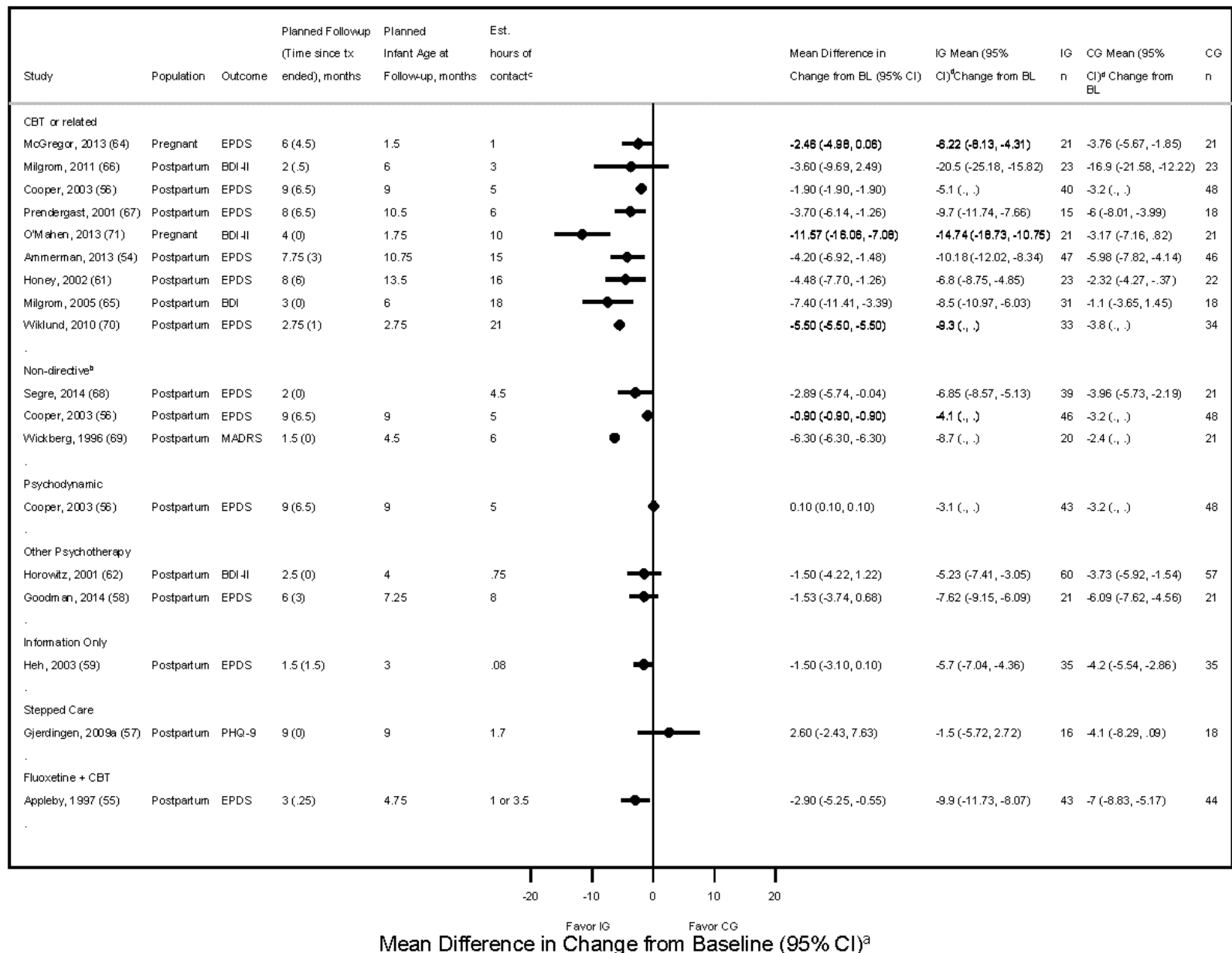


eFigure 3. Funnel plot with pseudo 95% confidence limits of included studies of cognitive behavioral therapy (Key Question 4)



Abbreviations: ES = effect size; RR = relative risk; SE = standard error

eFigure 4. Benefits of Depression Treatment, Depression Symptoms (Key Question 4)



Some studies did not provide sufficient data to calculate the 95% confidence interval, these are indicated by a dot with no error bars on the forest plot, and parentheses with a dot (.) in the data columns. BDI indicates Beck Depression Inventory; CBT, cognitive behavioral therapy; EPDS, Edinburgh Postnatal Depression Scale; MADRS, Montgomery-Asberg Depression Rating Scale; PHQ, Patient Health Questionnaire. ^aError bars indicate 95% confidence interval. ^bNondirective therapy involves empathic, reflective listening rather than advice or direction in behavior change. ^cHours of contact were estimated based on planned number and length of sessions.

Reference List

- (1) Harris RP, Helfand M, Woolf SH et al. Current methods of the US Preventive Services Task Force: a review of the process. *Am J Prev Med* 2001;20:21-35.
- (2) Wells GA, Shea B, O'Connell D et al. The Newcastle-Ottawa Scale (NOS) for assessing the quality of nonrandomised studies in meta-analysis. http://www.ohri.ca/programs/clinical_epidemiology/oxford.asp. 2014; http://www.ohri.ca/programs/clinical_epidemiology/oxford.asp. Accessed January 21, 2014.
- (3) Whiting PF, Rutjes AW, Westwood ME et al. QUADAS-2: a revised tool for the quality assessment of diagnostic accuracy studies. *Ann Intern Med* 2011;155:529-536.
- (4) Shea BJ, Grimshaw JM, Wells GA et al. Development of AMSTAR: a measurement tool to assess the methodological quality of systematic reviews. *BMC Med Res Methodol* 2007;7:10.
- (5) McDonagh M, Matthews A, Phillipi C et al. *Treatment of depression during pregnancy and the postpartum period*. Rockville, MD: Agency for Healthcare Research and Quality; 2013.
- (6) Palmsten K, Huybrechts KF, Michels KB et al. Antidepressant use and risk for preeclampsia. *Epidemiology* 2013;24:682-691.
- (7) Palmsten K, Hernandez-Diaz S, Huybrechts KF et al. Use of antidepressants near delivery and risk of postpartum hemorrhage: cohort study of low income women in the United States. *BMJ* 2013;347:f4877.
- (8) Lupattelli A, Spigset O, Kore G, Nordeng H. Risk of vaginal bleeding and postpartum hemorrhage after use of antidepressants in pregnancy: A study from the Norwegian Mother and Child Cohort Study. *J Clin Psychopharmacol* 2014;34:143-148.
- (9) Kjaersgaard MI, Parner ET, Vestergaard M et al. Prenatal antidepressant exposure and risk of spontaneous abortion - a population-based study. *PLOS ONE* 2013;8:e72095..
- (10) Andersen JT, Andersen NL, Horwitz H, Poulsen HE, Jimenez-Solem E. Exposure to selective serotonin reuptake inhibitors in early pregnancy and the risk of miscarriage. *Obstet Gynecol* 2014;124:655-661.
- (11) Hayes RM, Wu P, Shelton RC et al. Maternal antidepressant use and adverse outcomes: a cohort study of 228,876 pregnancies.[Erratum appears in *Am J Obstet Gynecol*. 2013 Apr;208(4):326]. *Am J Obstet Gynecol* 2012;207:49.

- (12) Jensen HM, Gron R, Lidegaard O, Pedersen LH, Andersen PK, Kessing LV. The effects of maternal depression and use of antidepressants during pregnancy on risk of a child small for gestational age. *Psychopharmacology* 2013;228:199-205.
- (13) Jordan AE, Jackson GL, Deardorff D, Shivakumar G, McIntire DD, Dashe JS. Serotonin reuptake inhibitor use in pregnancy and the neonatal behavioral syndrome. *J Matern Fetal Neonatal Med* 2008;21:745-751.
- (14) Ban L, Gibson J, West J et al. Maternal depression, antidepressant prescriptions, and congenital anomaly risk in offspring: a population-based cohort study. *BJOG* 2014;121:1471-1481.
- (15) Yazdy MM, Mitchell AA, Louik C, Werler MM. Use of selective serotonin-reuptake inhibitors during pregnancy and the risk of clubfoot. *Epidemiology* 2014;25:859-865.
- (16) Huybrechts KF, Palmsten K, Avorn J et al. Antidepressant use in pregnancy and the risk of cardiac defects. *N Engl J Med* 2014;370:2397-2407.
- (17) Polen KN, Rasmussen SA, Riehle-Colarusso T, Reefhuis J, National Birth Defects Prevention Study. Association between reported venlafaxine use in early pregnancy and birth defects, national birth defects prevention study, 1997-2007. *Birth Defects Res* 2013;97:28-35.
- (18) Louik C, Kerr S, Mitchell AA. First-trimester exposure to bupropion and risk of cardiac malformations. *Pharmacoepidemiol Drug Saf* 2014;23:1066-1075.