

## Supplementary Online Content

Ogden CL, Carroll MD, Lawman HG, et al. Trends in obesity prevalence among children and adolescents in the United States, 1988-1994 through 2013-2014. *JAMA*. doi:10.1001/jama.2016.6361

**eTable 1.** Prevalence of obesity and extreme obesity by age and education of household head, youth 2-19 years: US, 2011-2014

**eTable 2.** Demographic differences (odds ratio, 95% confidence interval) in obesity and extreme obesity, youth 2-19 years, US, 2011-2014

**eTable 3.** P-values for adjusted linear and quadratic trend analyses of obesity and extreme obesity prevalence, by age, 1988-1994 through 2013-2014

**eTable 4.** P-values for unadjusted and adjusted linear trend analyses of obesity and extreme obesity prevalence, by age, 2005-2006 through 2013-2014

**eFigure 1.** Prevalence of obesity, youth 2-19 years, by age, US, 1988-1994 through 2013-2014

**eFigure 2.** Prevalence of extreme obesity, youth 2-19 years, by age, US, 1988-1994 through 2013-2014

This supplementary material has been provided by the authors to give readers additional information about their work.

**eTable 1.** Prevalence of obesity and extreme obesity by age and education of household head, youth 2-19 years: US, 2011-2014<sup>a</sup>

Age group (y) by education of household head	Obesity <sup>b</sup>			Extreme obesity <sup>c</sup>		
	Percent	95% CI		Percent	95% CI	
		Lower limit	Upper limit		Lower limit	Upper limit
2-19						
<High school degree	21.0	18.5	23.8	7.9	6.4	9.7
High school degree	22.2	19.1	25.5	7.4	5.8	9.3
>High school degree	14.1	12.0	16.4	4.6	3.4	6.0
2-5						
<High school degree	13.6	10.1	17.6	3.4	1.8	5.8
High school degree	12.7	8.5	17.9	2.1 <sup>d</sup>	0.7	4.8
>High school degree	5.7	3.9	8.1	1.0 <sup>e</sup>	0.4	2.1
6-11						
<High school degree	22.9	19.7	26.4	8.9	6.8	11.3
High school degree	23.1	18.1	28.7	7.6	5.1	10.7
>High school degree	14.1	11.1	17.5	4.0	2.7	5.8
12-19						
<High school degree	23.2	18.8	28.0	9.4	6.6	13.0
High school degree	25.9	19.7	32.9	9.7	6.7	13.3
>High school degree	18.2	14.4	22.5	6.7	4.7	9.2

a. Data from the National Health and Nutrition Examination Survey; estimates are weighted

b. Obesity was defined as at or above the age and sex specific 95<sup>th</sup> percentile on the BMI-for-age CDC growth charts

c. Extreme obesity was defined as a BMI at or above 120% of the 95<sup>th</sup> percentile of BMI-for-age

d. Relative standard error = 43%

e. Relative standard error = 35%

BMI: body mass index; CI: confidence interval

**eTable 2.** Demographic differences (odds ratio, 95% confidence interval) in obesity and extreme obesity, youth 2-19 years, US, 2011-2014<sup>b</sup>

Demographic group	Obesity <sup>c</sup>	Extreme obesity <sup>d</sup>
Sex		
Male	Reference	Reference
Female	1.01 (0.85-1.22)	1.05 (0.81-1.35)
Age group, y		
2-5	Reference	Reference
6-11	2.29 (1.73-3.03)	3.57 (2.11-6.04)
12-19	2.82 (2.08-3.84)	5.06 (3.29-7.78)
Race/Hispanic origin		
Non-Hispanic white	Reference	Reference
Non-Hispanic black	1.34 (1.03-1.75)	1.95 (1.32-2.88)
Non-Hispanic Asian	0.57 (0.39-0.82)	0.31 (0.14-0.71)
Hispanic	1.48 (1.23-1.78)	1.59 (1.05-2.39)
Education of household head		
<High school degree	1.41 (1.13-1.75)	1.54 (1.12-2.12)
High school degree	1.61 (1.27-2.04)	1.49 (1.03-2.15)
>High school degree	Reference	Reference

- a. Multivariate logistic regression model including all 4 demographic covariates
- b. Data from the National Health and Nutrition Examination Survey, estimates are weighted
- c. Obesity was defined as at or above the age and sex specific 95<sup>th</sup> percentile on the BMI-for-age CDC growth charts
- d. Extreme obesity was defined as a BMI at or above 120% of the 95<sup>th</sup> percentile of BMI-for-age

**eTable 3.** P-values for adjusted<sup>a</sup> linear and quadratic trend analyses of obesity<sup>b</sup> and extreme obesity<sup>c</sup> prevalence, by age, 1988-1994 through 2013-2014<sup>d</sup>

	Age Group, y			
	2-19	2-5	6-11	12-19
Obesity				
Linear	<0.001	0.41	<0.001	<0.001
Quadratic	0.006	0.001	0.049	0.23
Extreme obesity				
Linear	<0.001	0.45	0.01	<0.001
Quadratic	0.20	0.18	0.45	0.30

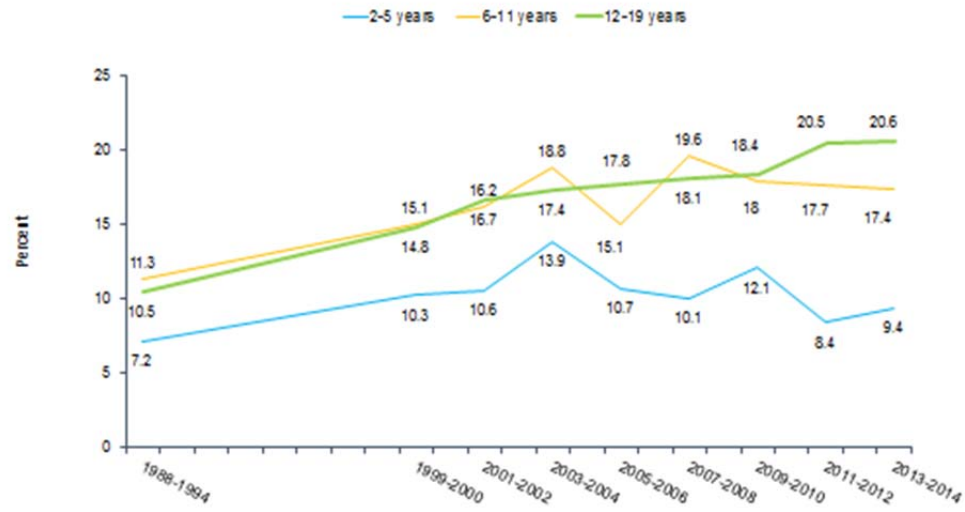
- a. 2-19 years adjusted for sex, age group, race-Hispanic origin and education of household head; age specific adjusted for sex, race-Hispanic origin and education of household head
- b. Obesity was defined as at or above the age and sex specific 95<sup>th</sup> percentile on the BMI-for-age CDC growth charts
- c. Extreme obesity was defined as a BMI at or above 120% of the 95<sup>th</sup> percentile of BMI-for-age.
- d. Data from the National Health and Nutrition Examination Survey

**eTable 4.** P-values for unadjusted and adjusted<sup>a</sup> linear trend analyses of obesity<sup>b</sup> and extreme obesity<sup>c</sup> prevalence, by age, 2005-2006 through 2013-2014<sup>d</sup>

	Age Group, y			
	2-19	2-5	6-11	12-19
<b>Obesity</b>				
Unadjusted	0.37	0.27	0.67	0.19
Adjusted	0.24	0.34	0.62	0.14
<b>Extreme obesity</b>				
Unadjusted	0.11	0.87	0.39	0.09
Adjusted	0.08	0.78	0.35	0.07

- a. 2-19 years adjusted for sex, age group, race-Hispanic origin and education of household head; age specific adjusted for sex, race-Hispanic origin and education of household head
- b. Obesity was defined as at or above the age and sex specific 95<sup>th</sup> percentile on the BMI-for-age CDC growth charts.
- c. Extreme obesity was defined as a BMI at or above 120% of the 95<sup>th</sup> percentile of BMI-for-age.
- d. Data from the National Health and Nutrition Examination Survey

Figure 1. Prevalence of obesity, youth 2-19 years, by age, US, 1988-1994 through 2013-2014



Obesity defined as at or above the sex specific 95<sup>th</sup> percentile of BMI-for-age CDC growth charts; extreme obesity defined as 120% of the sex specific 95<sup>th</sup> percentile of BMI-for-age CDC growth charts  
 Source: CDC/NCHS, National Health and Nutrition Examination Survey

eFigure 2. Prevalence of extreme obesity, youth 2-19 years, by age, US, 1988-1994 through 2013-2014

