

## Supplementary Online Content

Rajendra S, Sharma P, Gautam SD, et al. Association of biomarkers for human papillomavirus with survival among adults with Barrett high-grade dysplasia and esophageal adenocarcinoma. *JAMA Netw Open*. 2020;3(2):e1921189.  
doi:10.1001/jamanetworkopen.2019.21189

**eTable 1.** Demographic and Clinical Characteristics of the Study Population and Associated Tumors According to Patient Group

**eFigure 1.** Flow Diagram Showing HPV DNA and Biomarker Status of Enrolled Study Patients

**eFigure 2.** Positive Nuclear Staining Patterns for pRb, Cyclin D1, MCM2, Ki-67; Magnification  $\times 20$

**eTable 2.** Comparison of Survival, Disease Relapse, Progression and Site of Failure in Low pRb or High pRb Expression Patients Stratified by HPV Status

**eTable 3.** Comparison of Survival, Disease Relapse, Progression and Site of Failure in Low CD1 or High CD1 Expression Patients Stratified by HPV Status

**eTable 4.** Comparison of Survival, Disease Relapse, Progression and Site of Failure in Low MCM2 or High MCM2 Expression Patients Stratified by HPV Status

**eTable 5.** Comparison of Survival, Disease Relapse, Progression and Site of Failure in Ki-67 Positive or Negative Patients Stratified by HPV Status

This supplementary material has been provided by the authors to give readers additional information about their work.

**eTable 1.** Demographic and clinical characteristics of the study population and associated tumors according to patient group.

<b>Characteristic</b>	<b>HPV Positive HGD/EAC patients (n=37, 26.1%)</b>	<b>HPV Negative HGD/EAC patients (n=105, 73.9%)</b>	<b>P-value <sup>a</sup></b>
<b>Sex (M/F)</b>	33 (89.2%) 4 (10.80%)	93 (88.6%) 12 (11.4%)	0.92
<b>Age, mean (SD) in years</b> <b>Range</b>	65.2 (SD +/- 12.4) Min=33.0, Max=89.0	66.2 (SD +/- 12.0) Min=32.0, Max=90.0	0.65
<b>BMI, mean (SD)</b>	27.7 (SD+/-5.7)	27.0 (SD+/-5.1)	0.53
<b>Ever smoked</b>	24/37 (64.9%)	77/105 (73.3%)	0.33
<b>&gt;10 pack years<sup>b</sup></b>	22/24 (91.7%)	69/76 (90.8%)	0.90
<b>&gt;20 pack years<sup>b</sup></b>	15/24 (62.5%)	48/76 (63.2%)	0.95
<b>Alcohol intake</b>	26/36 (72.2%)	75/105 (71.4%)	0.93
<b>Excess Alcohol<sup>c</sup></b>	8/35 (22.9%)	18/105 (17.1%)	0.45
<b>Low pRb</b>	18/37 (48.7%)	35/105 (33.3%)	0.10
<b>Low CD1</b>	22/37 (59.5%)	54/105 (51.4%)	0.40
<b>Ki-67 positive</b>	31/37 (83.8%)	79/105 (75.2%)	0.28

<b>High MCM2</b>	15/37 (40.5%)	70/105 (66.7%)	0.005
------------------	---------------	----------------	-------

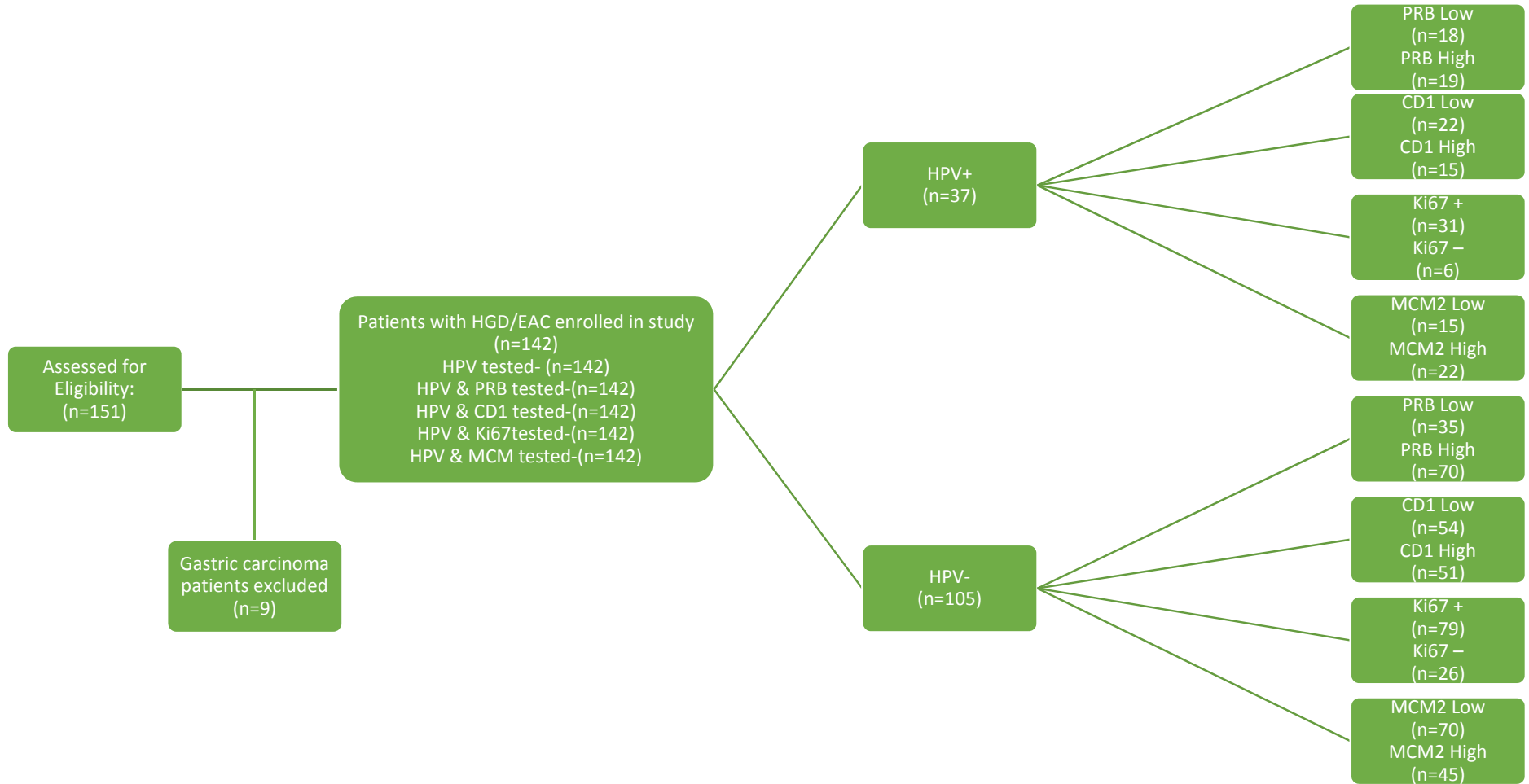
<sup>a</sup> Differences between HPV positive versus HPV negative cases regarding baseline characteristics were assessed using two-sample t-test for all numerical data and chi-square analysis for binary measurements.

<sup>b</sup> A pack-year=smoking one packet of cigarettes per day for a year.

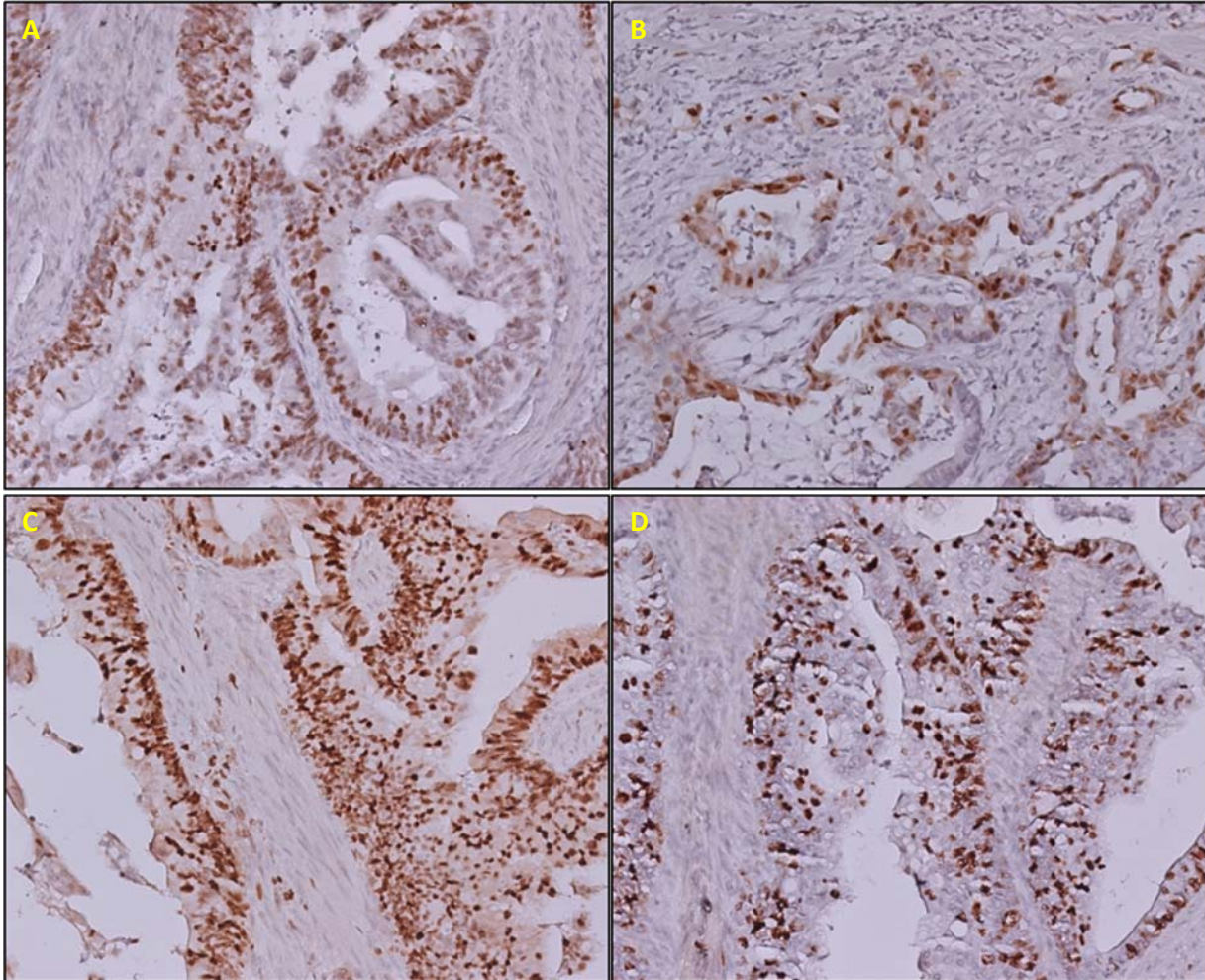
<sup>c</sup> Excess alcohol intake=for men >21 units per week, for women >14 units per week.

Abbreviations: BMI; body mass index, CD1; cyclin D1, EAC; esophageal adenocarcinoma, EMR; endoscopic mucosal resection, HGD; high-grade dysplasia, HPV; human papillomavirus, MCM; minichromosome maintenance protein, PPI; proton-pump inhibitors, pRb; retinoblastoma protein, NSAID's; non-steroidal anti-inflammatory drugs, RFA; radiofrequency ablation, SD; standard deviation

**eFigure 1.** Flow diagram showing HPV DNA and biomarker status of enrolled study patients.



**eFigure 2.** Positive nuclear staining patterns for A) pRb, B) Cyclin D1, C) MCM2, D) Ki-67. Magnification X 20



**eTable 2.** Comparison of Survival, Disease Relapse, Progression and Site of Failure in low pRb or high pRb expression patients stratified by HPV status.

	HPV + No. (%CI)		HPV- No. (%CI)		p-value
	Low pRb (4)	High pRb (3)	Low pRb (2)	High pRb (1)	
<b>Disease-free survival, mean (SD), mo</b>	41.2 (31.2)	39.5 (37.0)	25.5 (27.6)	23.4 (24.6)	0.03
<b>Overall survival, mean (SD), mo</b>	42.9 (30.5)	44.5 (35.8)	30.2 (25.9)	29.6 (25.2)	0.08
<b>Survival status (alive at last follow-up)</b>	12(66.7)	14 (73.7)	16 (45.7)	42 (60.0)	0.19
<b>Recurrence or progression</b>	4 (22.2)	5 (26.3)	20 (57.1)	41 (58.6)	0.006
<b>Recurrence</b>	2 (11.1)	4 (21.1)	13 (37.1)	33 (47.1)	0.02
<b>Local-regional failure</b>	1 (5.6)	5 (26.3)	7 (20.0)	25 (35.7)	0.05
<b>Distant metastases</b>	3 (16.7)	0 (0)	13 (37.1)	16 (22.9)	0.02
<b>Death due to OAC</b>	2 (11.1)	3 (15.8)	15 (42.9)	23 (32.9)	0.049

Abbreviations: EAC; esophageal adenocarcinoma, HPV; human papillomavirus, mo; months N/A; not applicable, pRb; retinoblastoma protein, SD; standard deviation.

**eTable 3.** Comparison of Survival, Disease Relapse, Progression and Site of Failure in low CD1 or high CD1 expression patients stratified by HPV status

	HPV + No. (%CI)		HPV- No. (%CI)		p-value
	Low CD1 (4)	High CD1 (3)	Low CD1 (2)	High CD1 (1)	
<b>Disease-free survival, mean (SD), mo</b>	38.9 (33.2)	42.5 (35.7)	26.3 (24.0)	21.7 (27.0)	0.02
<b>Overall survival, mean, mo</b>	43.1 (33.1)	44.6 (33.6)	32.3 (22.2)	27.1 (28.2)	0.05
<b>Survival status (alive at last follow-up)</b>	16 (72.7)	10 (66.7)	35 (64.8)	23 (45.1)	0.07
<b>Recurrence or progression</b>	4 (18.2)	5 (33.3)	31 (57.4)	30 (58.8)	0.004
<b>Recurrence</b>	2 (9.1)	4 (26.7)	21 (38.9)	25 (49.0)	0.01
<b>Local-regional failure</b>	2 (9.1)	4 (26.7)	19 (35.2)	13 (25.5)	0.14
<b>Distant metastases</b>	2 (9.1)	1 (6.7)	12 (22.2)	17 (33.3)	0.049
<b>Death due to OAC</b>	2 (9.1)	3 (20.0)	16 (29.6)	22 (43.1)	0.024

Abbreviations: EAC; esophageal adenocarcinoma, HPV; human papillomavirus, mo; months N/A; not applicable, CD1; Cyclin D1, SD; standard deviation

**eTable 4.** Comparison of Survival, Disease Relapse, Progression and Site of Failure in low MCM2 or high MCM2 expression patients stratified by HPV status

	HPV + No. (%CI)		HPV- No. (%CI)		p-value
	Low MCM2 (4)	High MCM2 (3)	Low MCM2 (2)	High MCM2 (1)	
<b>Disease-free survival, mean (SD), mo</b>	42.5 (35.7)	38.9 (33.2)	25.3 (23.6)	23.5 (26.5)	0.03
<b>Overall survival, mean, mo</b>	44.6 (33.6)	43.1 (33.1)	32.8 (24.0)	28.3 (26.0)	0.06
<b>Survival status (alive at last follow-up)</b>	10 (66.7)	16 (72.7)	22 (62.9)	36 (51.4)	0.27
<b>Recurrence or progression</b>	5 (33.3)	4 (18.2)	18 (51.4)	43 (61.4)	0.003
<b>Recurrence</b>	4 (26.7)	2 (9.1)	12 (34.3)	34 (48.6)	0.007
<b>Local-regional failure</b>	4 (26.7)	2 (9.1)	10 (28.6)	22 (31.4)	0.23
<b>Distant metastases</b>	1 (6.7)	2 (9.1)	8 (22.9)	21 (30.0)	0.08
<b>Death due to OAC</b>	3 (2.5)	2 (9.1)	10 (28.6)	28 (40.0)	0.035

Abbreviations: EAC; esophageal adenocarcinoma, HPV; human papillomavirus, mo; months N/A; not applicable, MCM; Minichromosomal maintenance protein SD; standard deviation.



**eTable 5.** Comparison of Survival, Disease Relapse, Progression and Site of Failure in Ki-67 positive or negative patients stratified by HPV status

	HPV + No. (%CI)		HPV- No. (%CI)		p-value
	Ki67 + (4)	Ki67 – (3)	Ki67 + (2)	Ki67 – (1)	
<b>Disease-free survival, mean (SD), mo</b>	37.6 (34.7)	53.2 (27.6)	25.9 (27.0)	18.8 (19.7)	0.009
<b>Overall survival, mean, mo</b>	41.6 (33.6)	54.8 (28.9)	31.1 (26.9)	25.8 (19.3)	0.03
<b>Survival status (alive at last follow-up)</b>	22 (71.0)	4 (66.7)	44 (55.7)	14 (53.9)	0.45
<b>Recurrence or progression</b>	9 (29.0)	0 (N/A)	42 (53.2)	19 (73.1)	0.001
<b>Recurrence</b>	6 (19.4)	0 (N/A)	32 (40.5)	14 (53.9)	0.01
<b>Local-regional failure</b>	6 (19.4)	0 (N/A)	19 (24.1)	13 (50.0)	0.01
<b>Distant metastases</b>	3 (9.7)	0 (N/A)	23 (29.1)	6 (23.1)	0.08
<b>Death due to OAC</b>	5 (16.1)	0 (N/A)	27 (34.2)	11 (42.3)	0.048

Abbreviations: EAC; esophageal adenocarcinoma, HPV; human papillomavirus, mo; months N/A; not applicable, SD; standard deviation.