

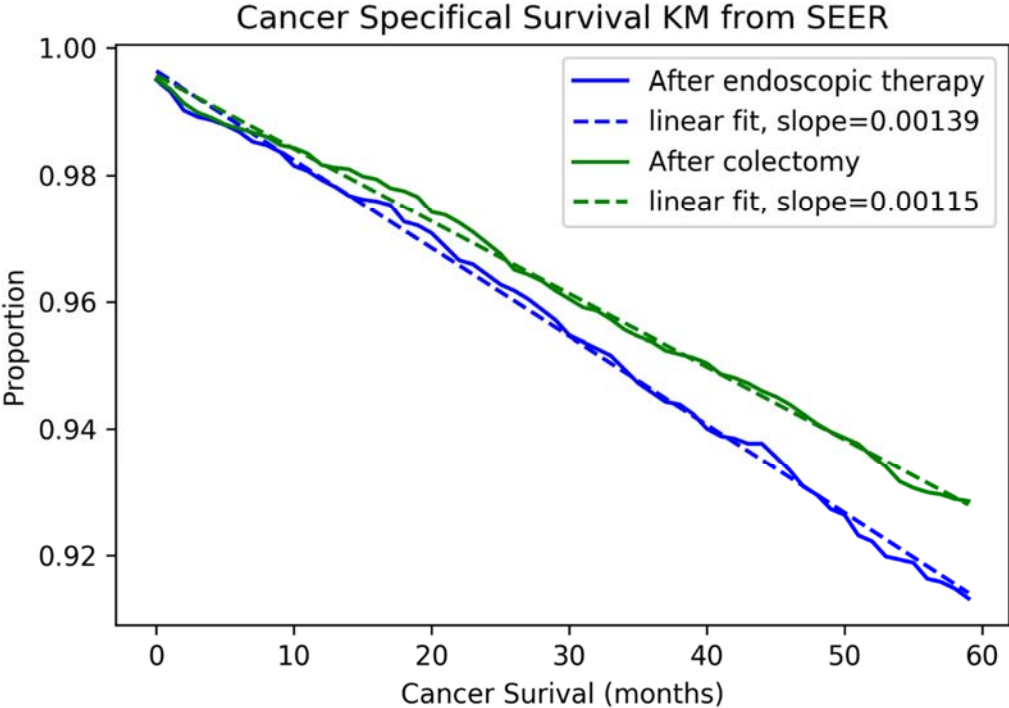
Supplementary Online Content

Jang SR, Truong H, Oh A, et al. Cost-effectiveness evaluation of targeted surgical and endoscopic therapies for early colorectal adenocarcinoma based on biomarker profiles. *JAMA Netw Open*. 2020;3(3):e1919963. doi:10.1001/jamanetworkopen.2019.19963

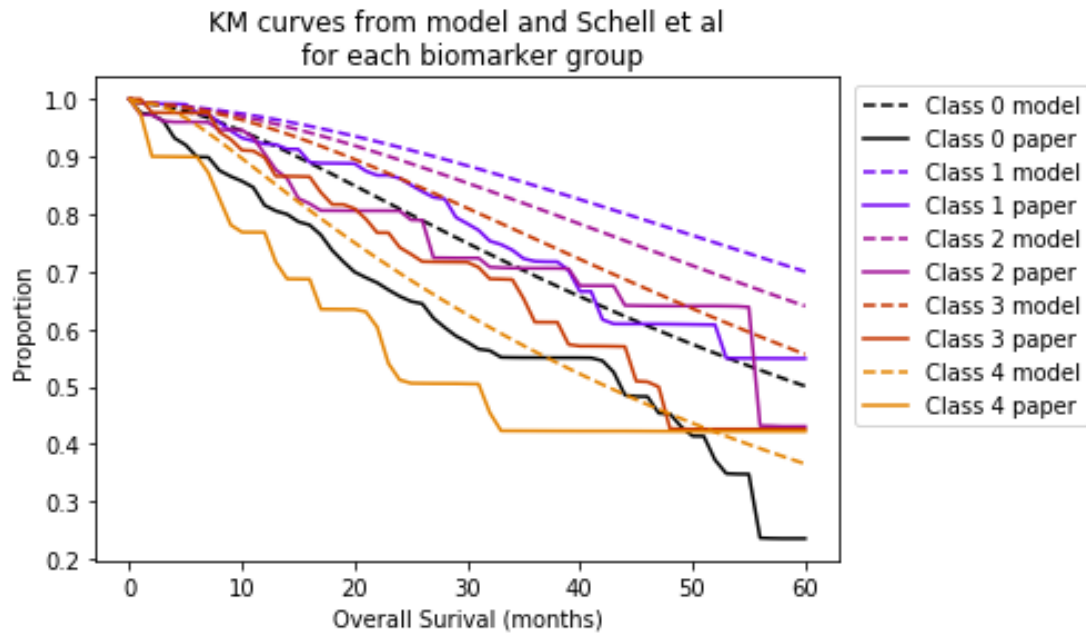
- eFigure 1.** SEER's CRC T1 Survival Curves With Linear Fit as Mortality Rates
- eFigure 2.** Calibrated Survival Curves Over Survival Curves From Schell et al
- eFigure 3.** One-Way Sensitivity Analysis Between Recurrent Cancer Treatment Cost Post-ET vs ICER (Class 0)
- eFigure 4.** One-Way Sensitivity Analysis Between Cost for Recurrent Cancer Treatment Post-LC vs ICER (Class 0)
- eFigure 5.** One-Way Sensitivity Analysis Between LC Treatment Cost vs ICER (Class 0)
- eFigure 6.** One-Way Sensitivity Analysis Between Monthly Recurrent Cancer Rate Post-LC vs ICER (Class 4)
- eFigure 7.** One-Way Sensitivity Analysis Between Monthly Recurrent Cancer Rate Post–Emergency Colectomy From LC vs ICER (Class 4)
- eFigure 8.** One-Way Sensitivity Analysis Between LC Cost vs ICER (Class 4)
- eFigure 9.** One-Way Sensitivity Analysis Between Cost for Recurrent Cancer Treatment Post-LC vs ICER (Class 4)
- eFigure 10.** One-Way Sensitivity Analysis Between Cost for Recurrent Cancer Treatment Post-ET vs ICER (Class 4)
- eFigure 11.** One-Way Sensitivity Analysis Between Cost for Utility for Recurrent Cancer Post-ET vs ICER (Class 4)
- eFigure 12.** One-Way Sensitivity Analysis Between Cost for Utility for Recurrent Cancer Post-LC vs ICER (Class 4)
- eFigure 13.** One-Way Sensitivity Analysis Between Cost for Utility for Post–Emergency Colectomy From LC vs ICER (Class 4)
- eFigure 14.** One-Way Sensitivity Analysis Between Monthly Mortality Rate vs ICER (Class 4)
- eFigure 15.** Probabilistic Sensitivity Analysis–ICER Scatterplot (Class 0)
- eFigure 16.** Probabilistic Sensitivity Analysis–Cost-effectiveness Acceptability Curve (Class 0)
- eFigure 17.** Probabilistic Sensitivity Analysis–ICER Scatterplot (Class 4)
- eFigure 18.** Probabilistic Sensitivity Analysis–Cost-effectiveness Acceptability Curve (Class 4)

This supplementary material has been provided by the authors to give readers additional information about their work.

eFigure 1. SEER's CRC T1 Survival Curves With Linear Fit as Mortality Rates

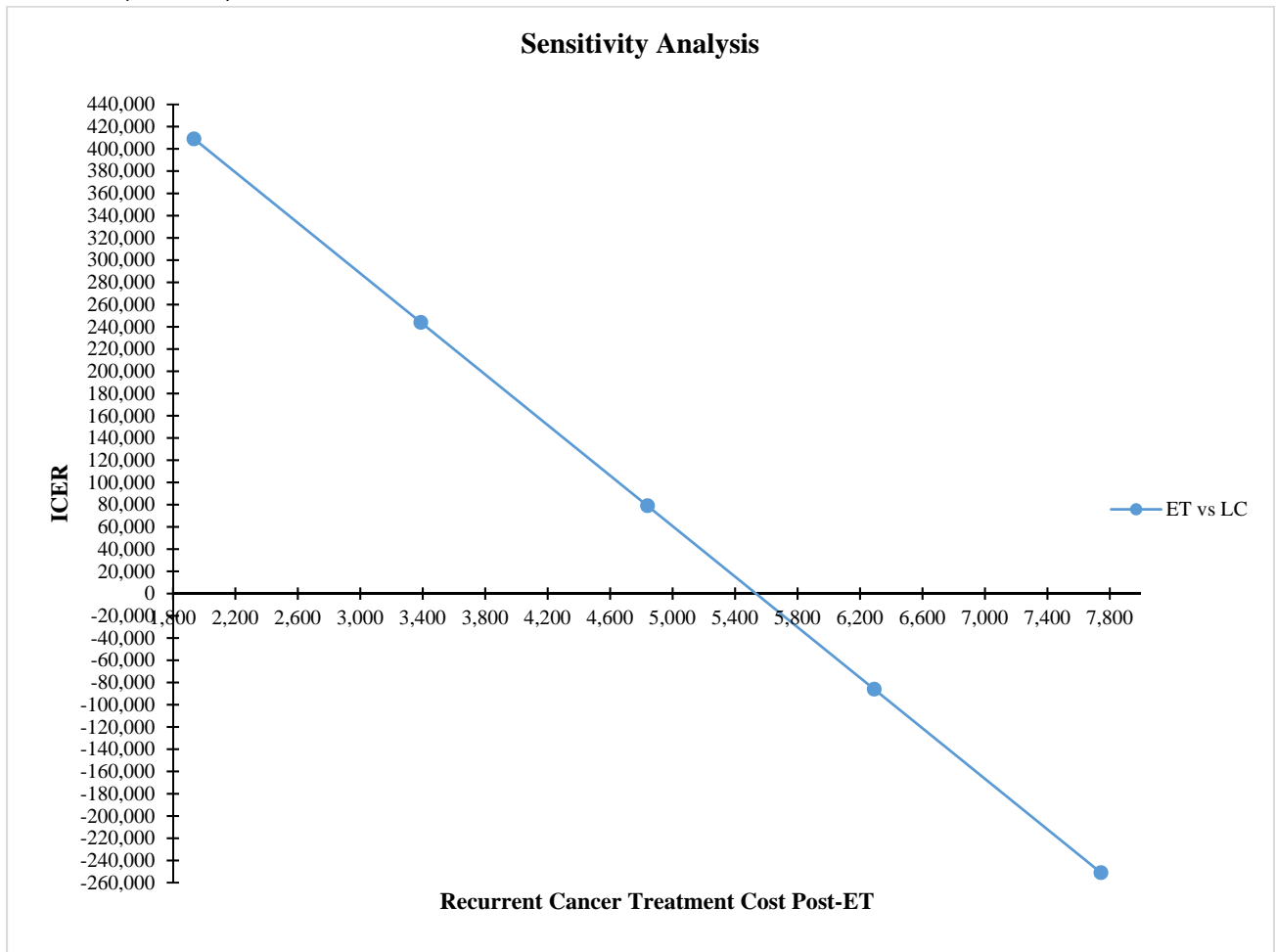


eFigure 2. Calibrated Survival Curves Over Survival Curves From Schell et al.

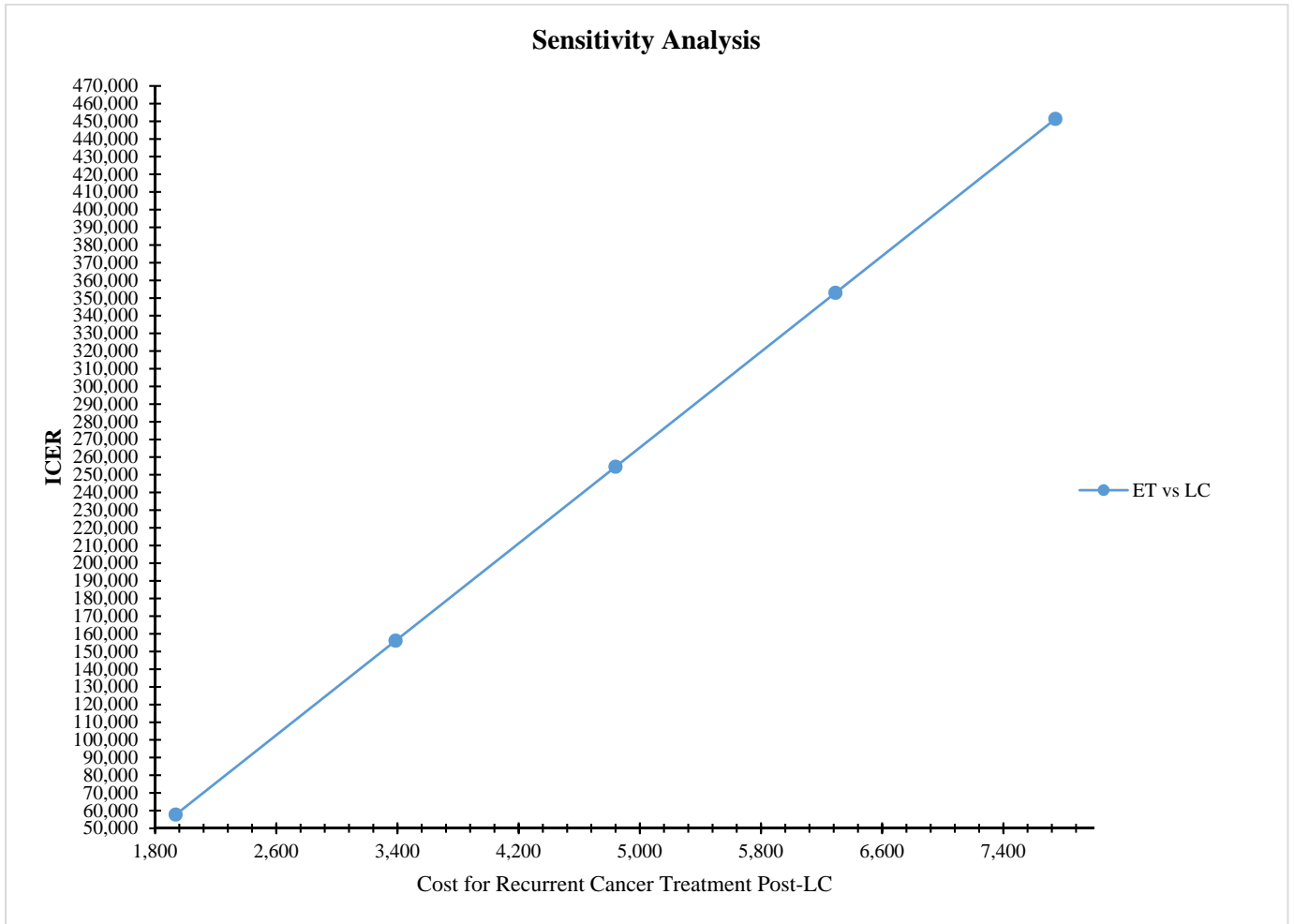


Dashed lines represent the survival curves calibrated by our research team.

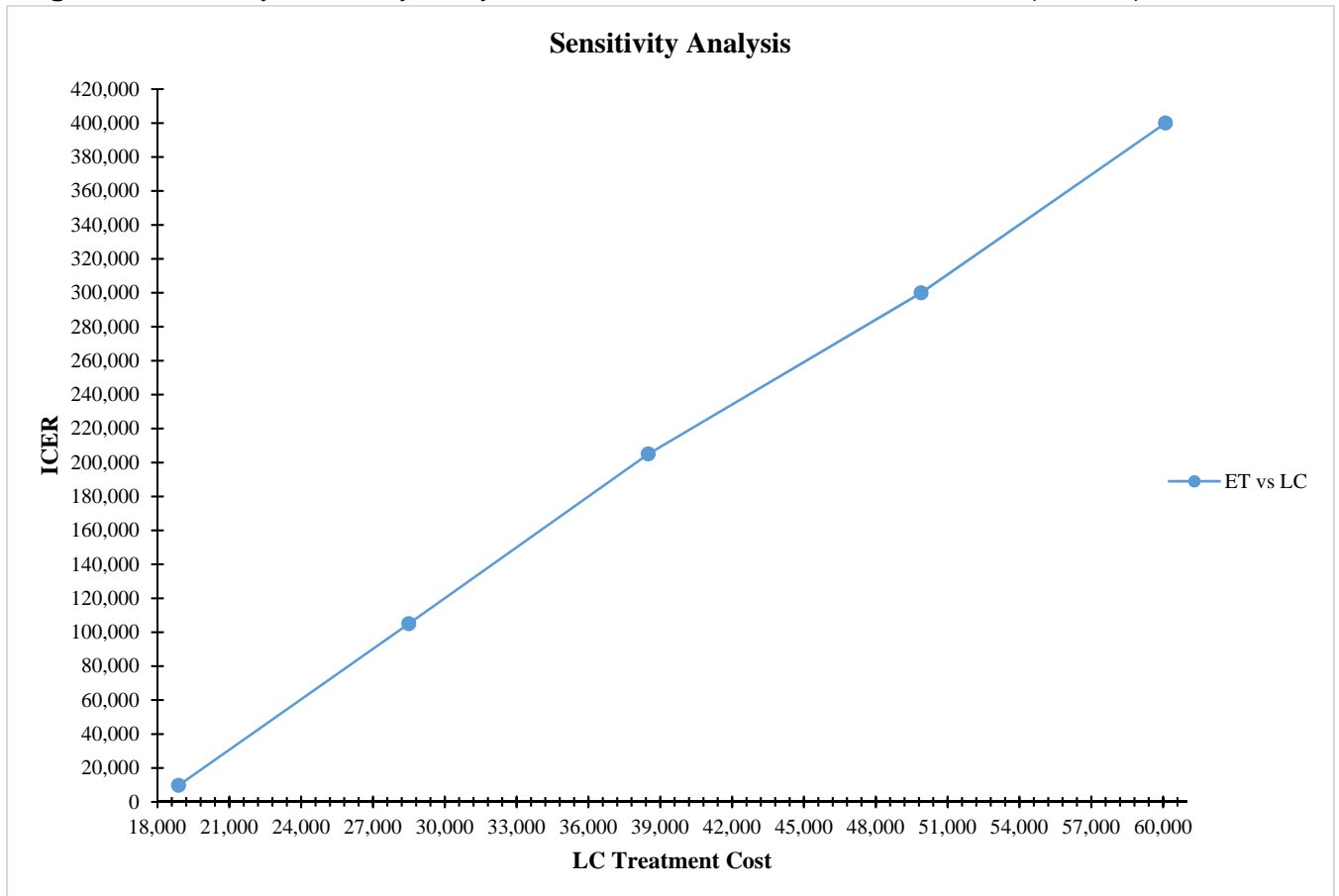
eFigure 3. One-Way Sensitivity Analysis Between Recurrent Cancer Treatment Cost Post-ET vs ICER (Class 0)



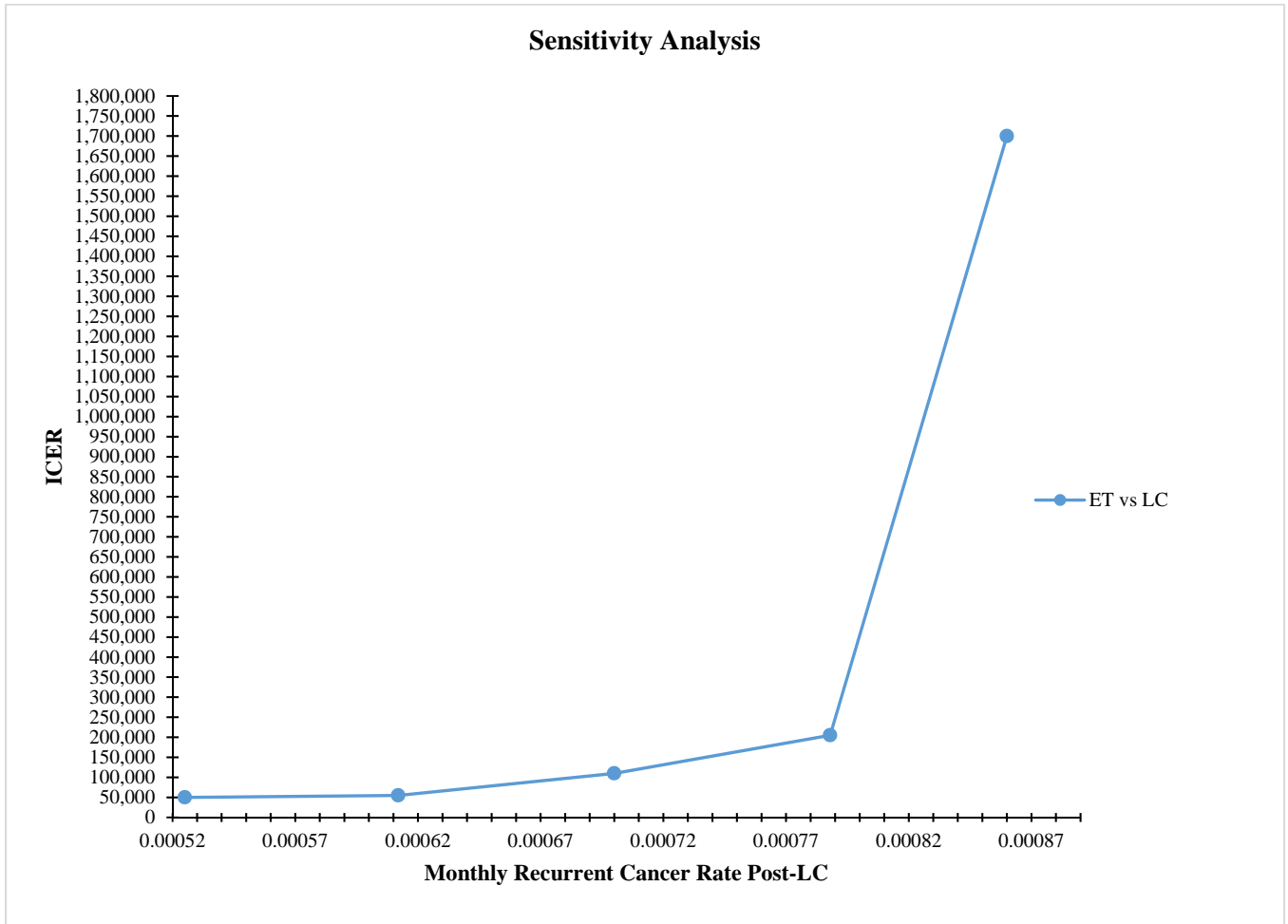
eFigure 4. One-Way Sensitivity Analysis Between Cost for Recurrent Cancer Treatment Post-LC vs ICER (Class 0)



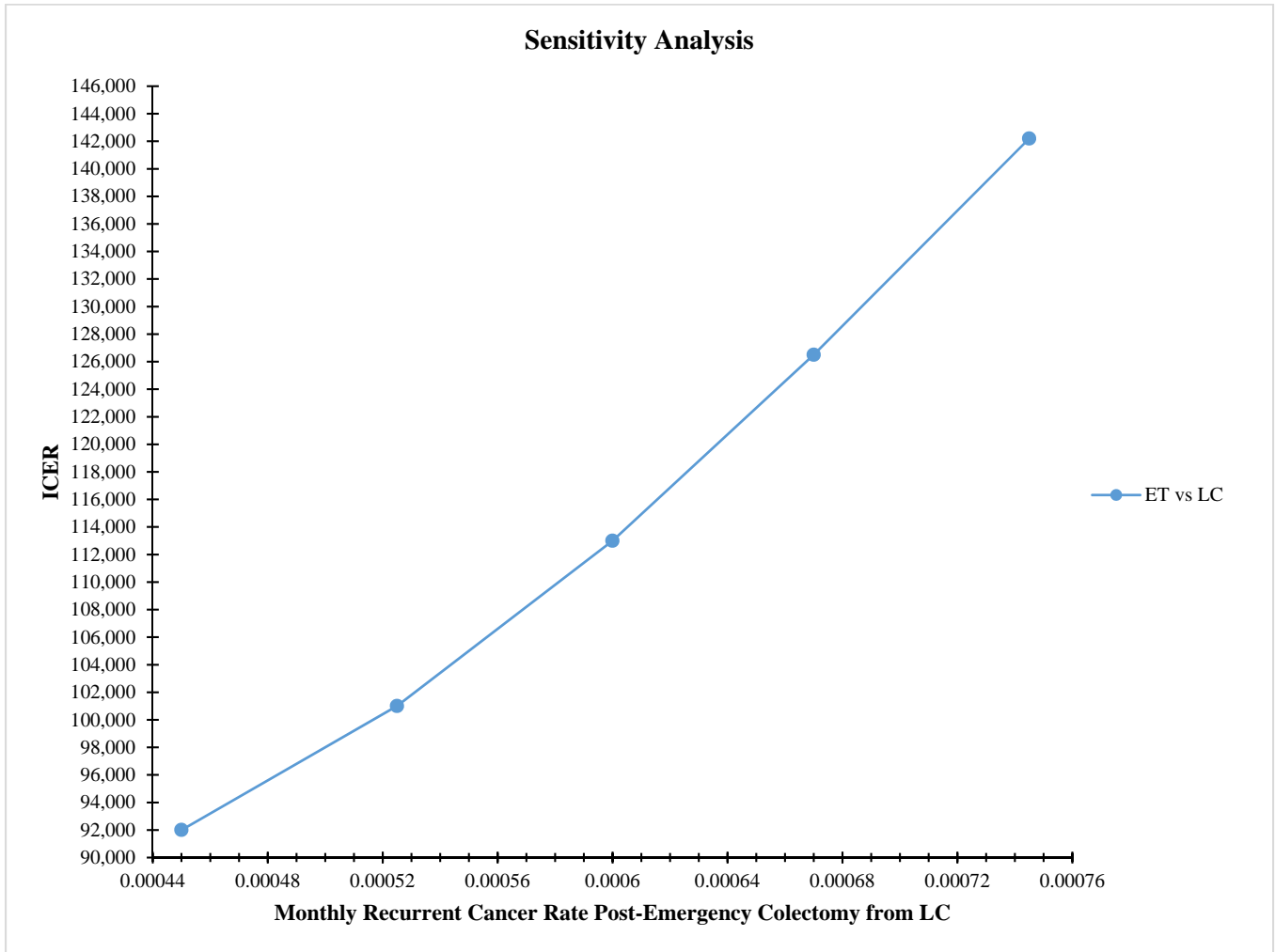
eFigure 5. One-Way Sensitivity Analysis Between LC Treatment Cost vs ICER (Class 0)



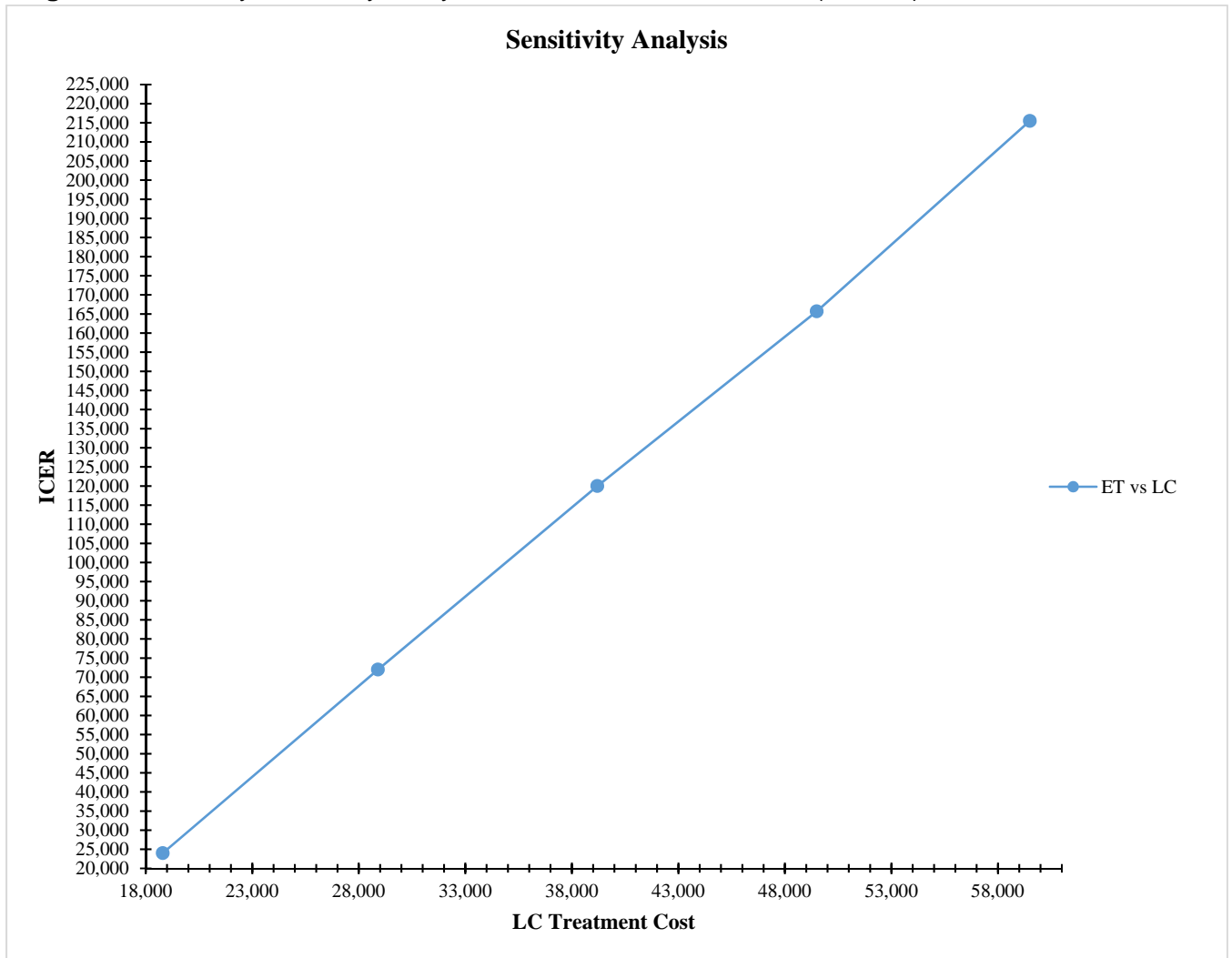
eFigure 6. One-Way Sensitivity Analysis Between Monthly Recurrent Cancer Rate Post-LC vs ICER (Class 4)



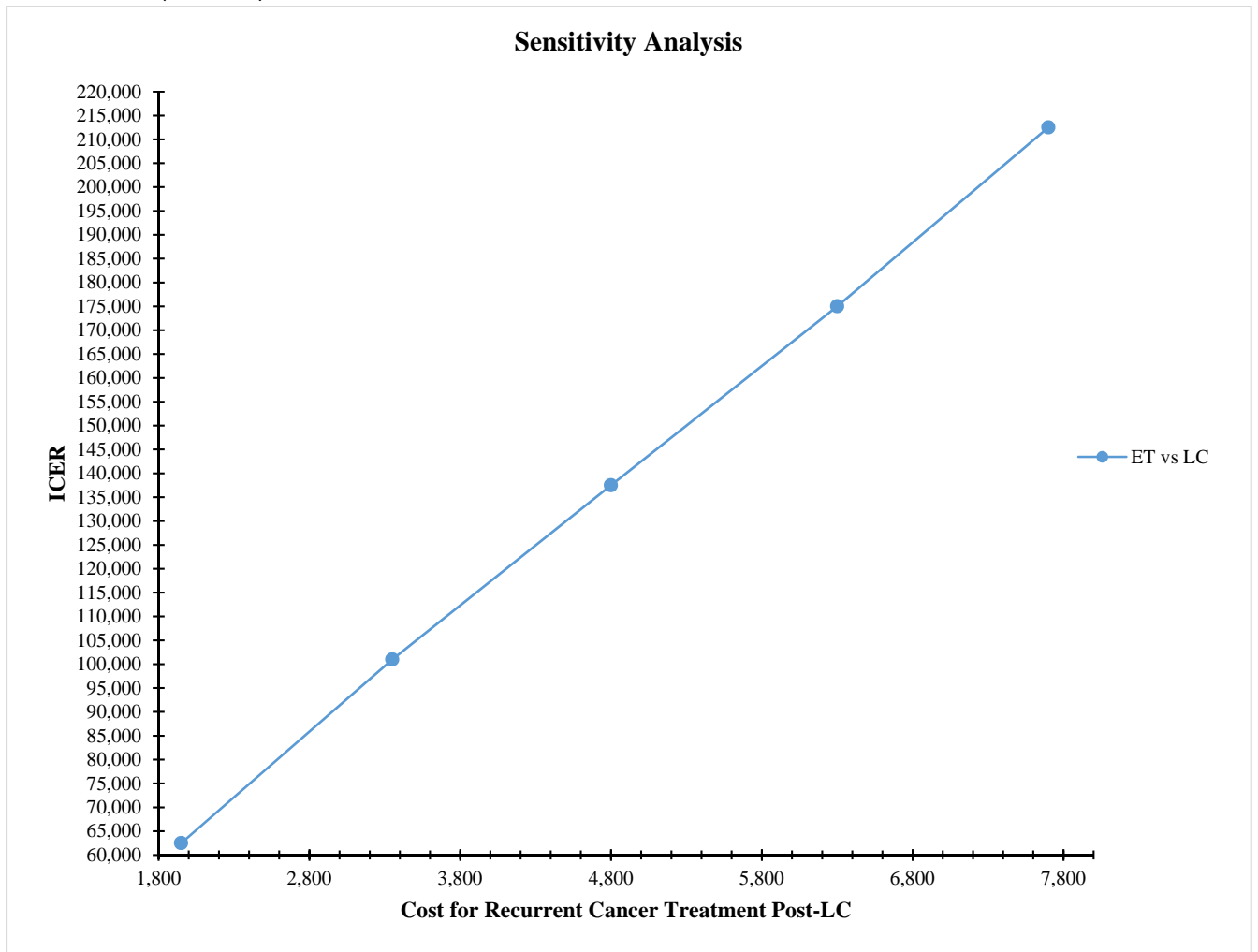
eFigure 7. One-Way Sensitivity Analysis Between Monthly Recurrent Cancer Rate Post–Emergency Colectomy from LC vs ICER (Class 4)



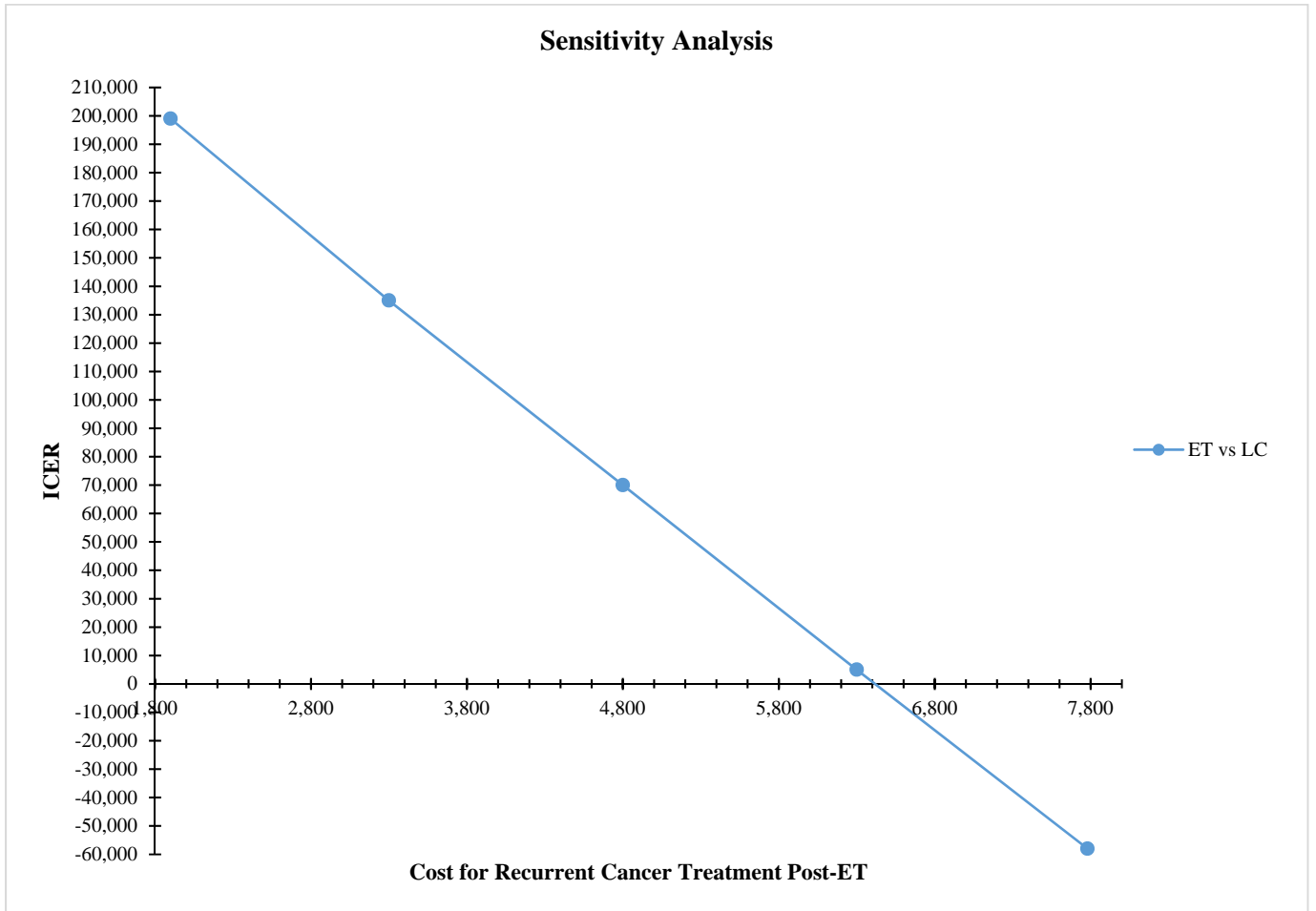
eFigure 8. One-Way Sensitivity Analysis Between LC Cost vs ICER (Class 4)



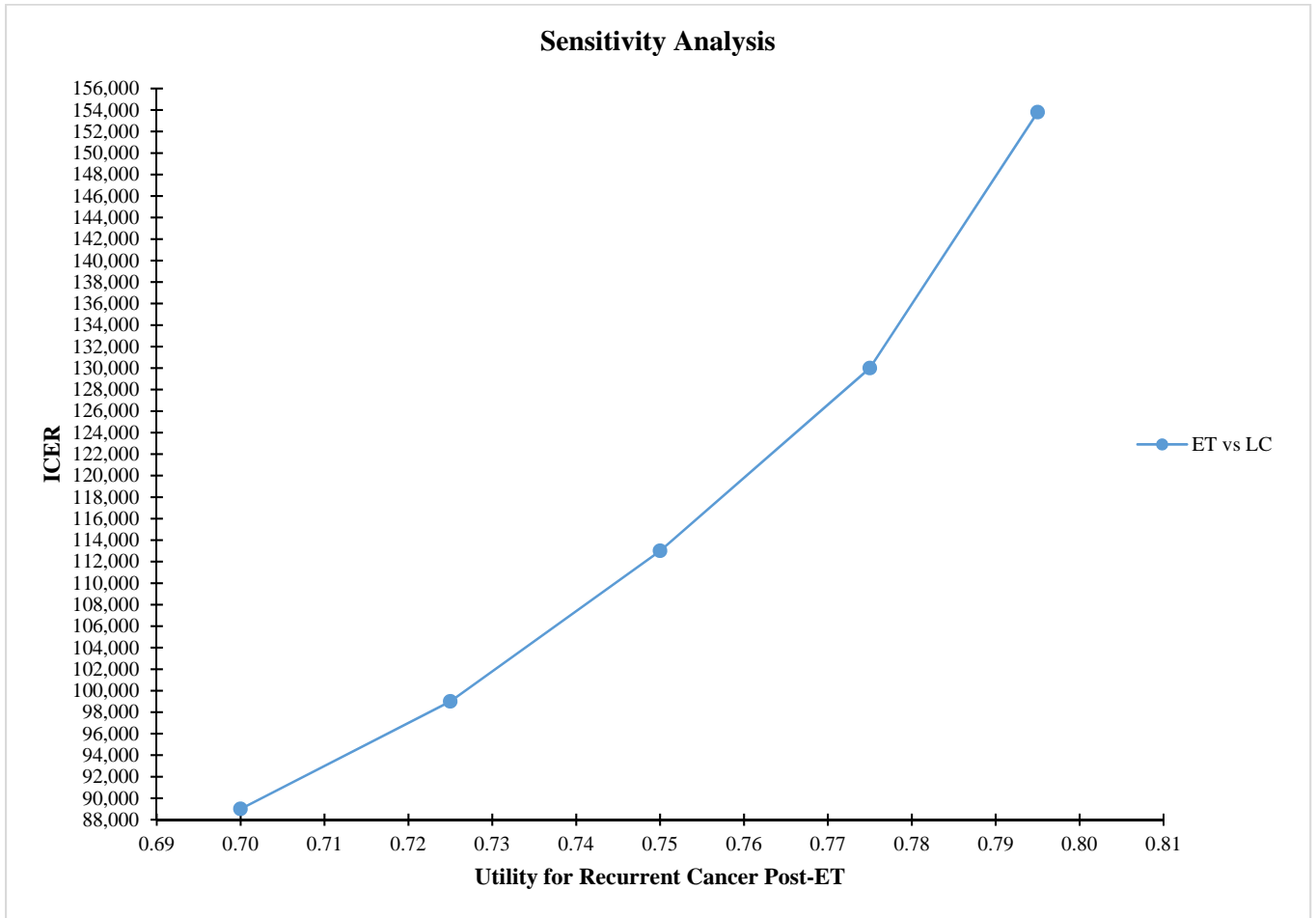
eFigure 9. One-Way Sensitivity Analysis Between Cost for Recurrent Cancer Treatment Post-LC vs ICER (Class 4)



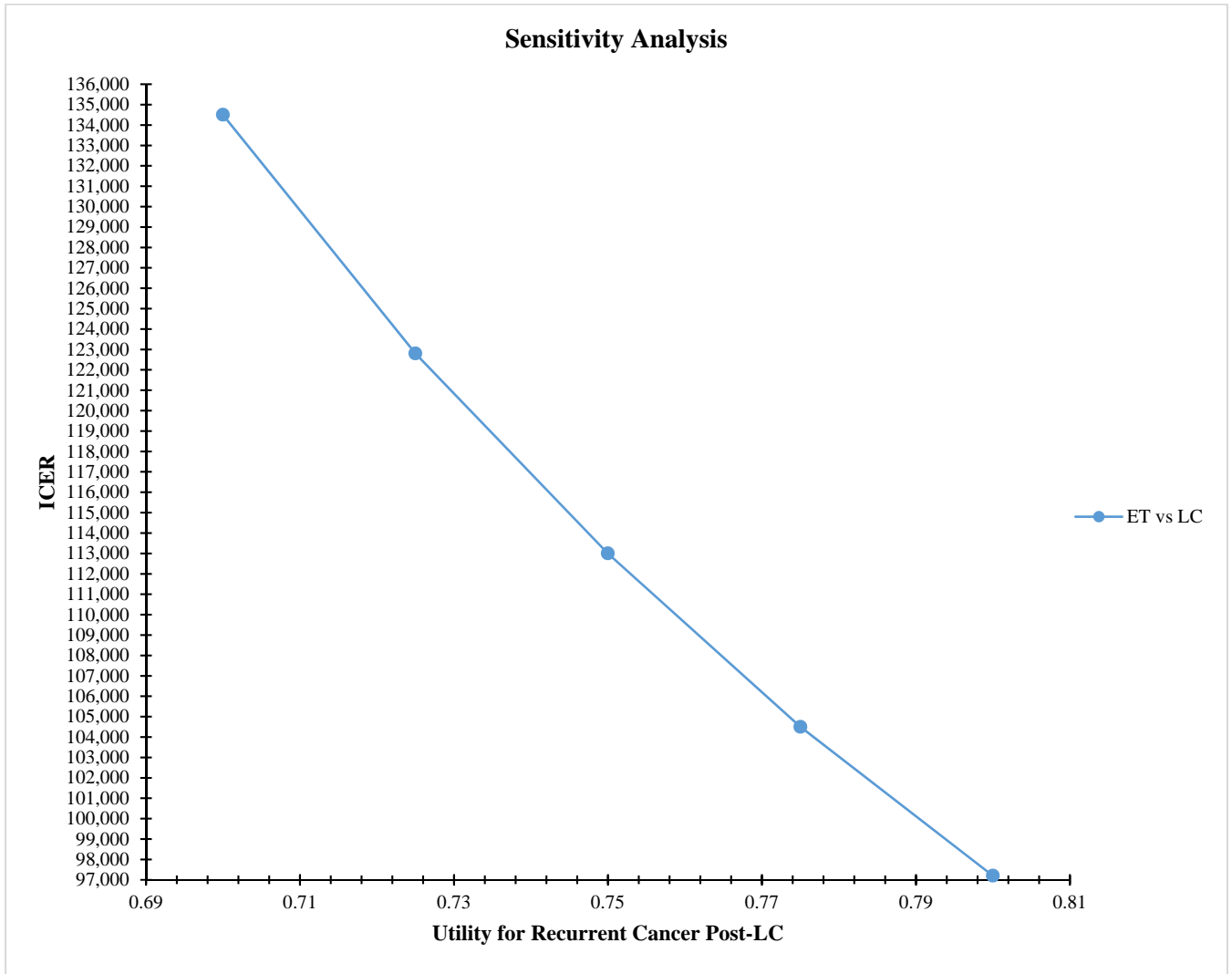
eFigure 10. One-Way Sensitivity Analysis Between Cost for Recurrent Cancer Treatment Post-ET vs ICER (Class 4)



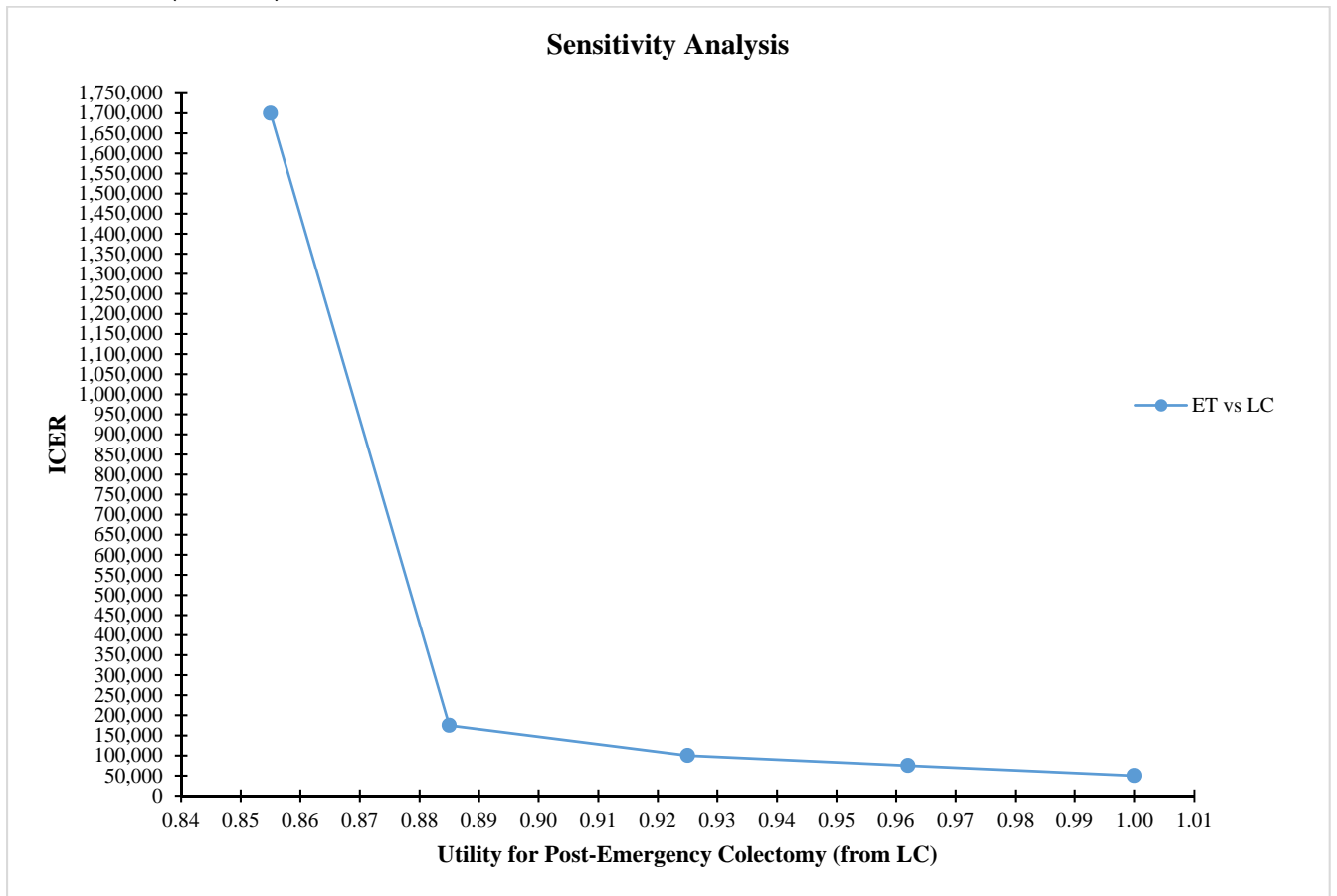
eFigure 11. One-Way Sensitivity Analysis Between Utility for Recurrent Cancer Post-ET vs ICER (Class 4)



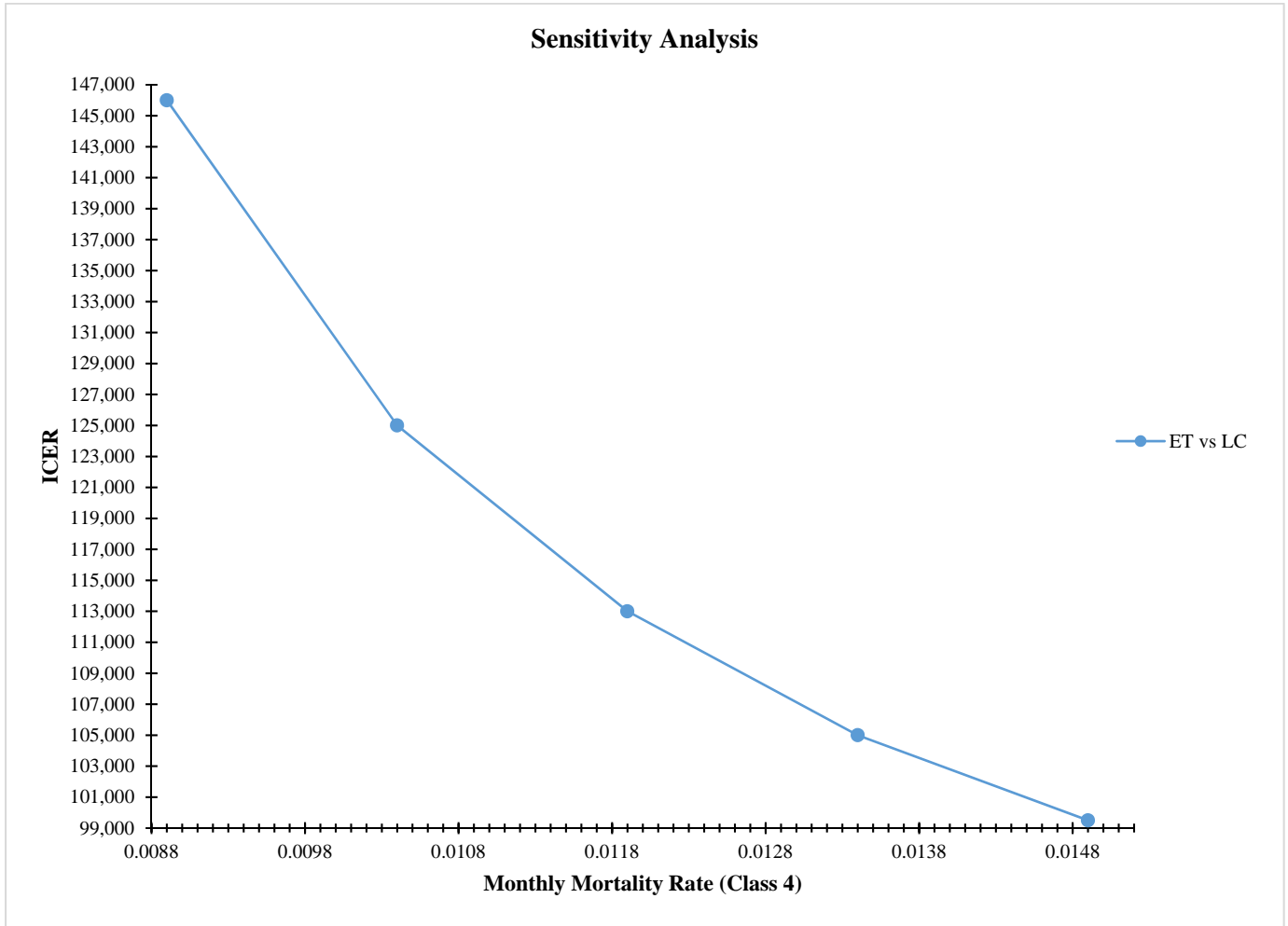
eFigure 12. One-Way Sensitivity Analysis Between Utility for Recurrent Cancer Post-LC vs ICER (Class 4)



eFigure 13. One-Way Sensitivity Analysis Between Utility for Post-Emergency Colectomy from LC vs ICER (Class 4)

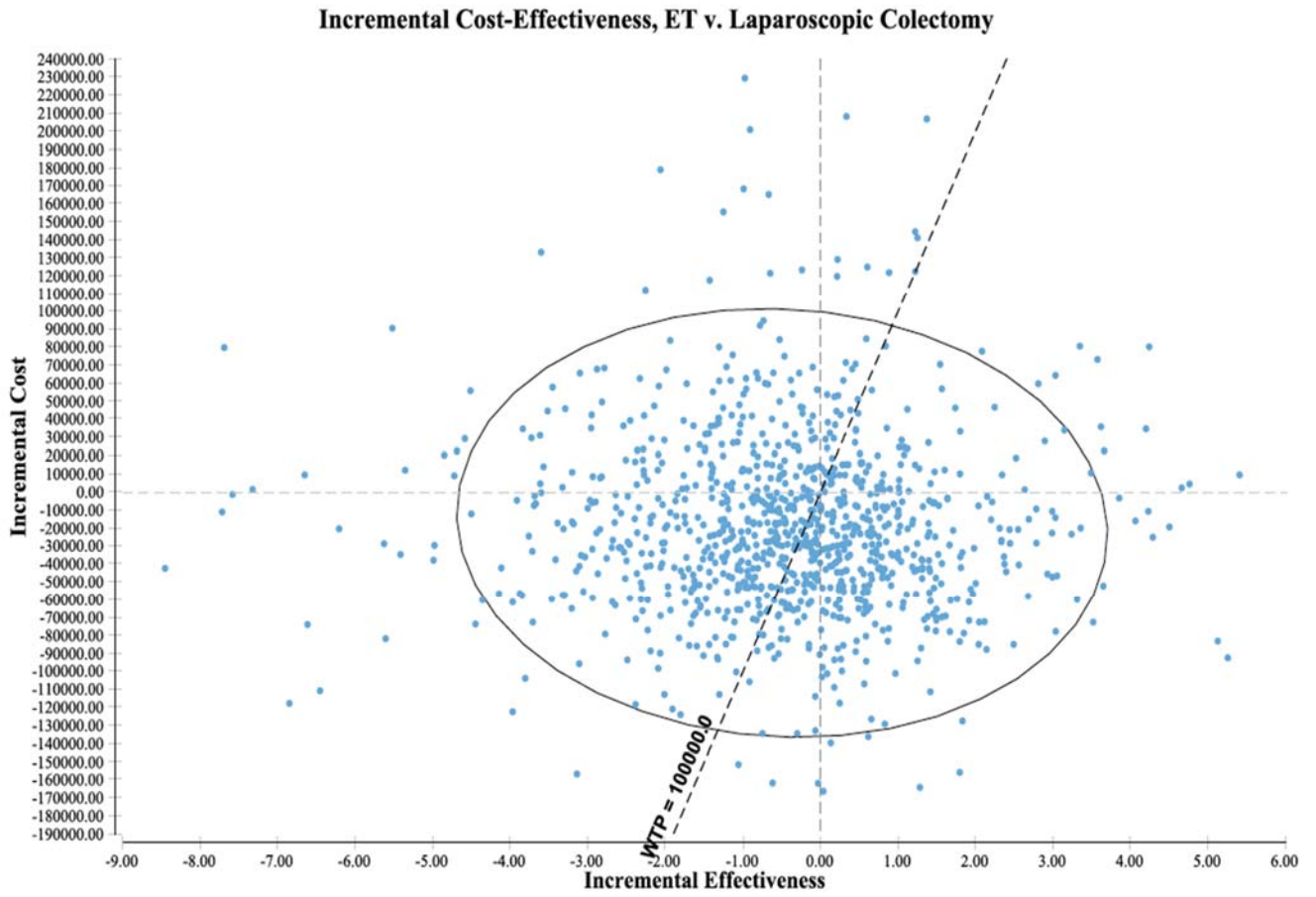


eFigure 14. One-Way Sensitivity Analysis Between Monthly Mortality Rate vs ICER (Class 4)



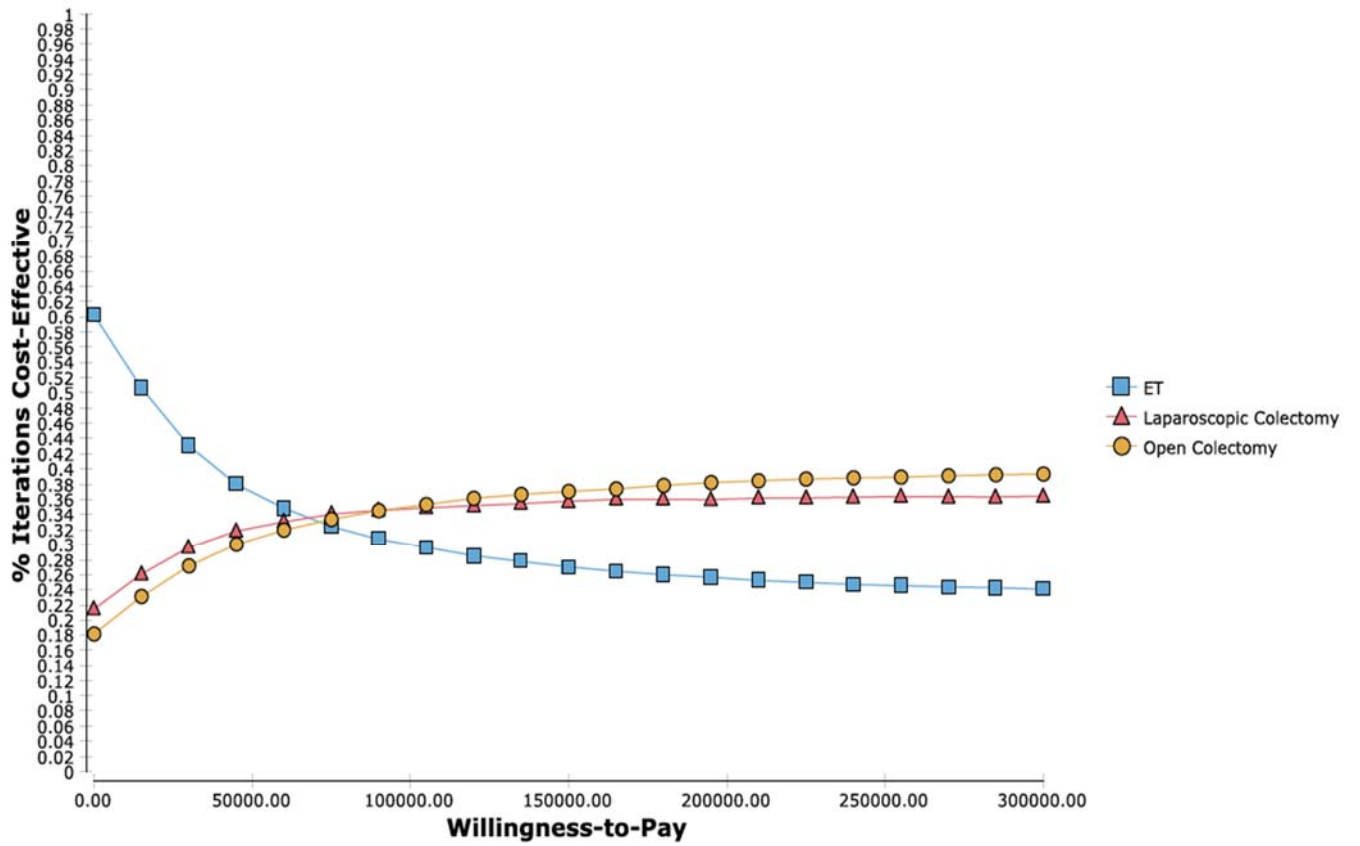
Abbreviations: LC, laparoscopic colectomy; ICER, incremental cost-effectiveness ratio; ET, endoscopic therapy

eFigure 15. Probabilistic Sensitivity Analysis–ICER Scatter Plot (Class 0)

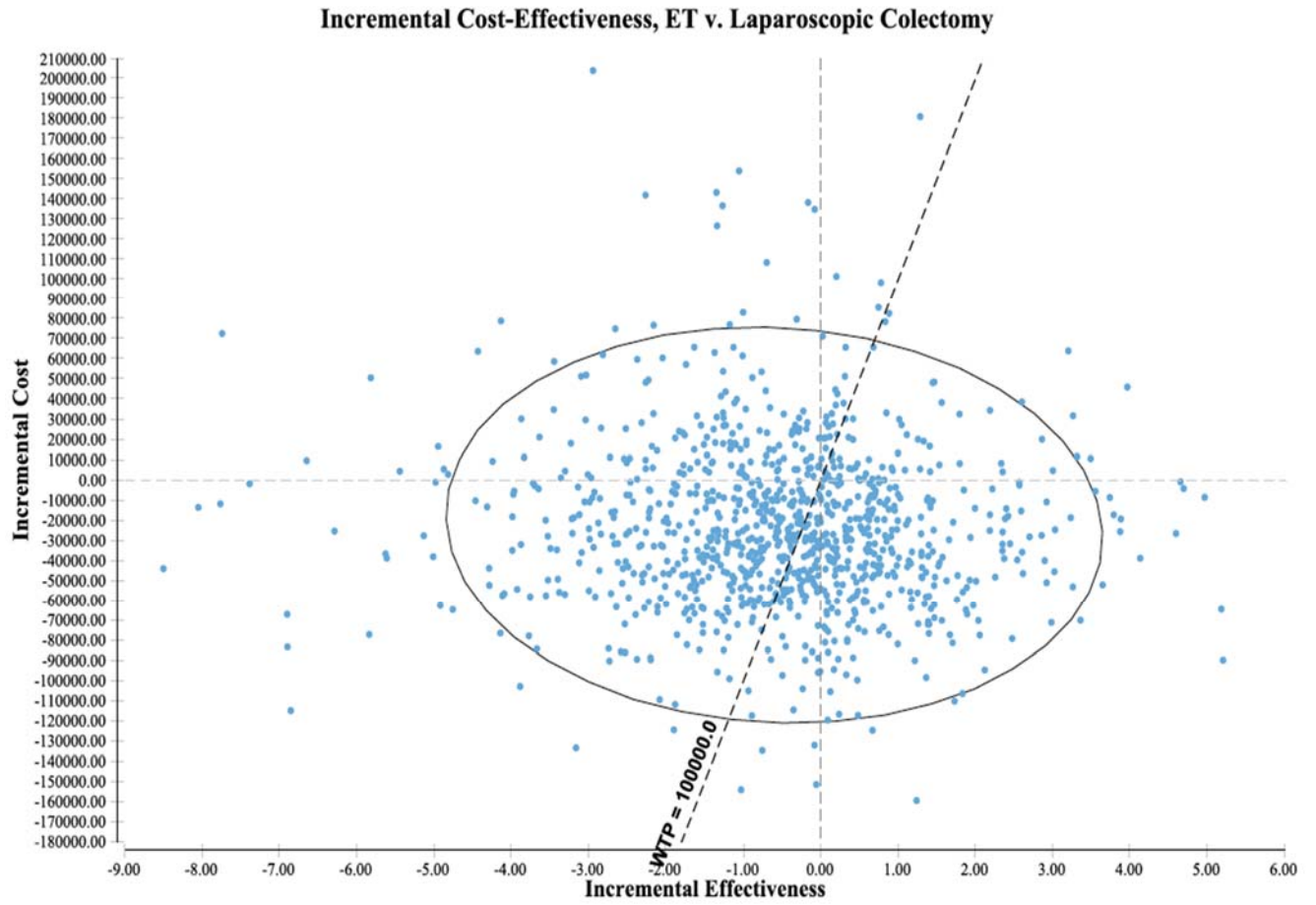


eFigure 16. Probabilistic Sensitivity Analysis–Cost-effectiveness Acceptability Curve (Class 0)

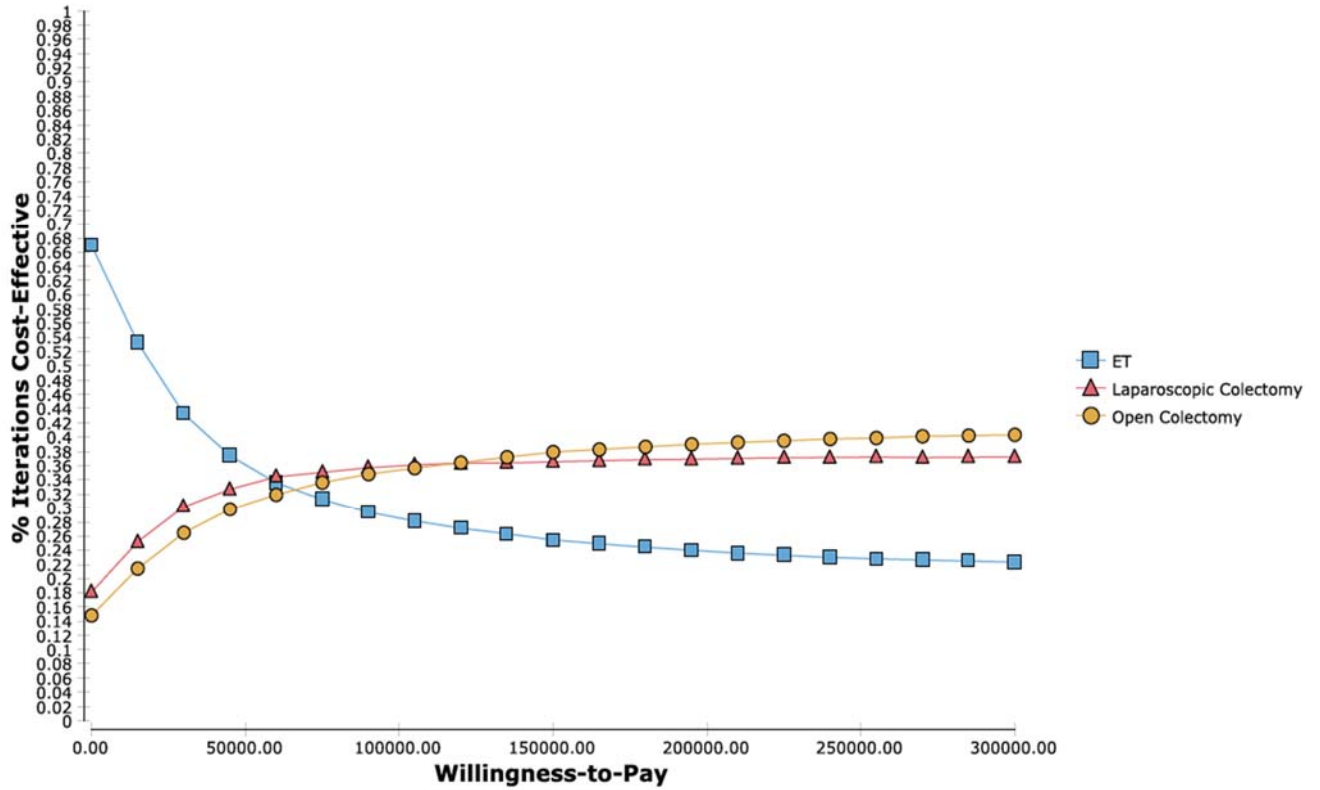
CE Acceptability Curve



eFigure 17. Probabilistic Sensitivity Analysis–ICER Scatterplot (Class 4)



eFigure 18. Probabilistic Sensitivity Analysis–Cost-effectiveness Acceptability Curve (Class 4)
CE Acceptability Curve



Abbreviations: ET, endoscopic therapy; LC, laparoscopic colectomy; ICER, incremental cost-effectiveness ratio