

Supplementary Online Content

van der Lei H, Steenweg M, Bugiani M; et al. Restricted diffusion in vanishing white matter. Arch Neurol. Published online February 6, 2012.
doi:10.1001/archneurol.2011.1658.

eFigure 1. ADC values of controls and patients

eFigure 2. ADC values of controls and patients

eTable. Number of patients with restricted diffusion per hemisphere

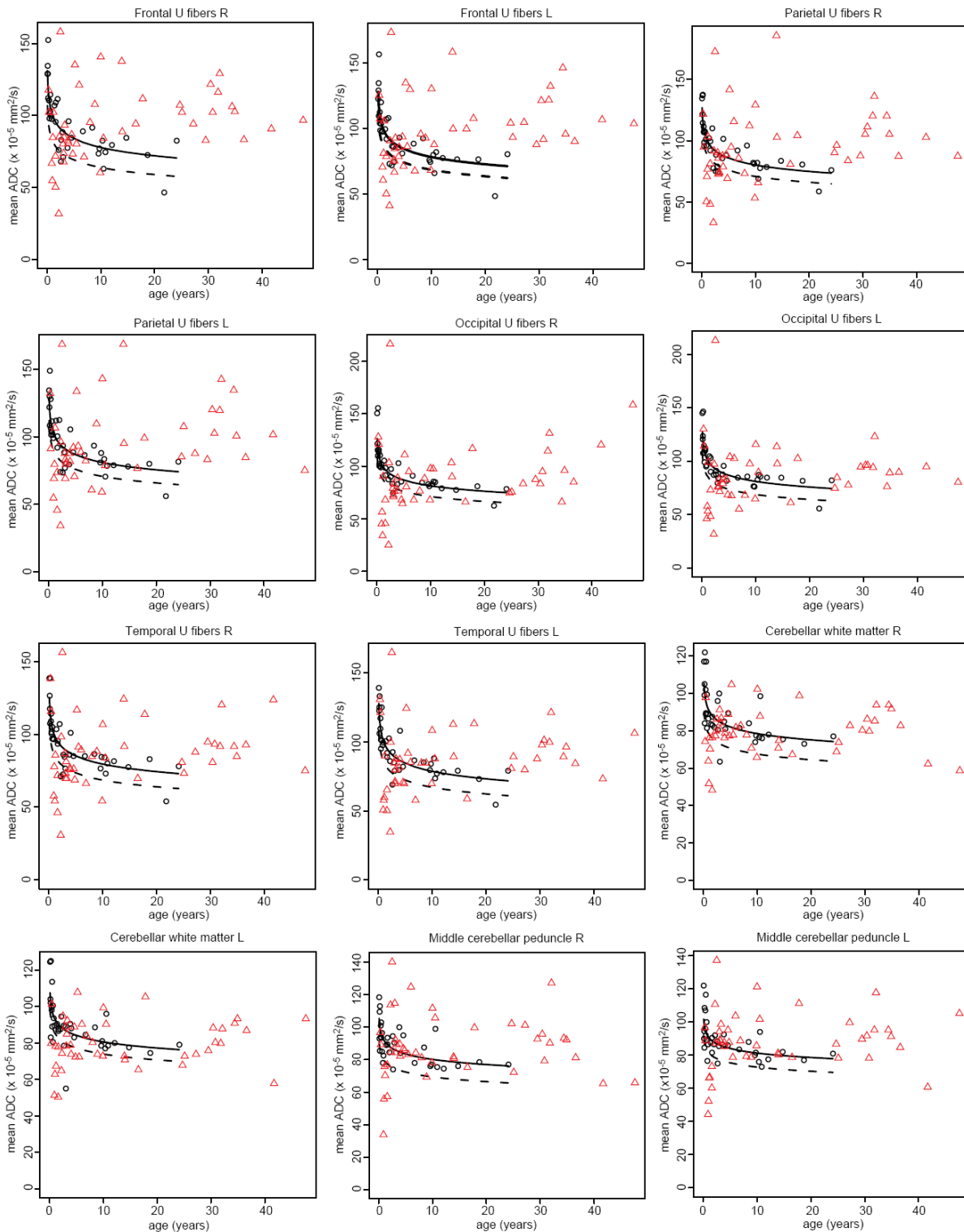
This supplementary material has been provided by the authors to give readers additional information about their work.

eTable. Number of patients with restricted diffusion per hemisphere

structure	right hemisphere	left hemisphere	patients
	n*	n	n**
frontal U fibers	7	11	12
parietal U fibers	12	11	14
occipital U fibers	13	13	18
temporal U fibers	12	11	14
cerebellar white matter	6	18	18
middle cerebellar peduncle	5	7	8
pyramidal tracts	5	7	8
genu of corpus callosum	-	-	8
splenium of corpus callosum	-	-	9
posterior limb of internal capsule	6	9	10

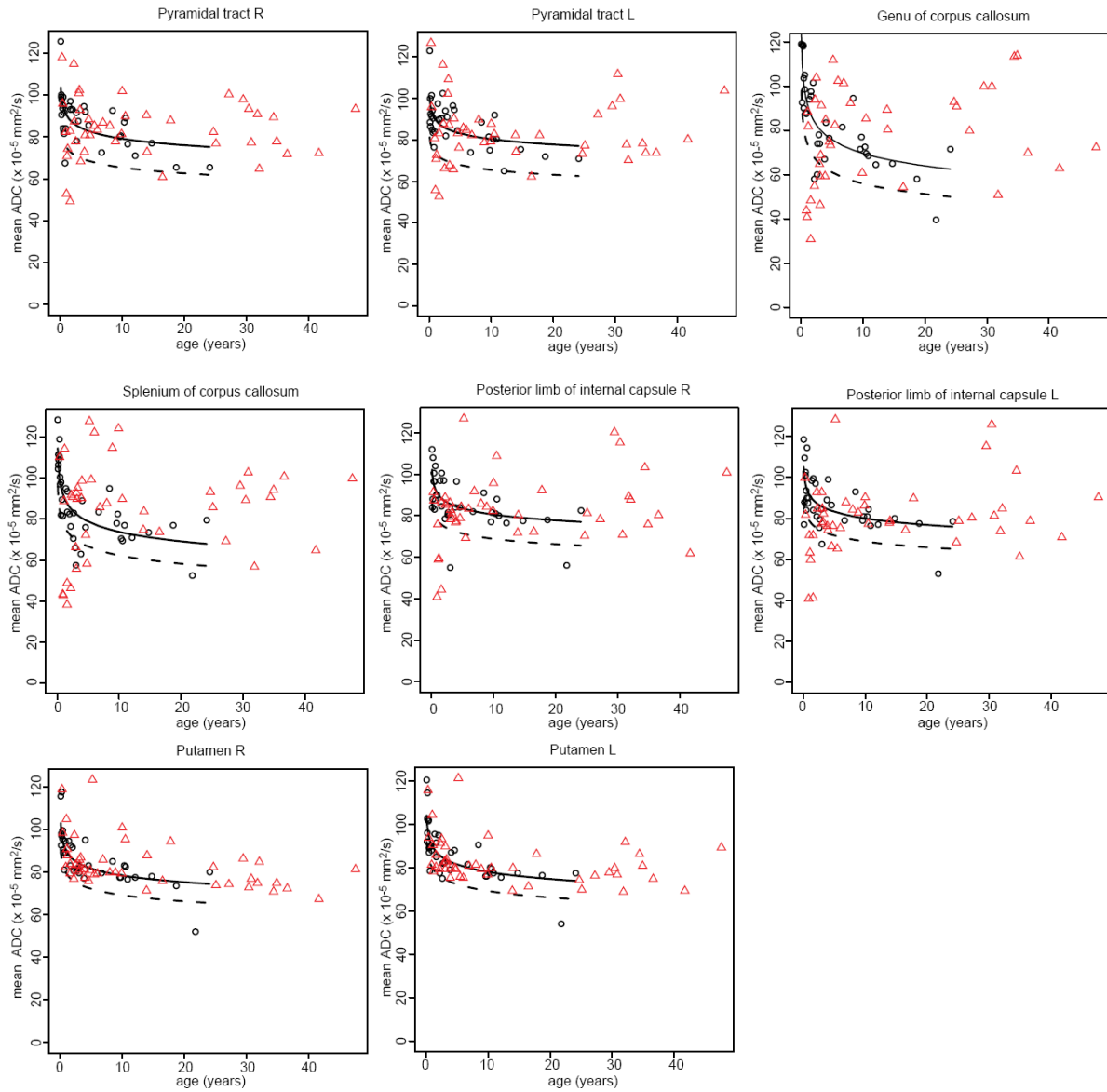
*total number of patients showing restricted diffusion in the structure in this hemisphere **total number of patients showing restriction in the right and/or the left hemisphere

Figure e-1. ADC values of controls and patients



Legend. Marks reflect ADC values (average of both investigators) of patient (red triangles) at first MRI and control persons (black circles) by age. Fifty (black line) and five percent prediction line (black striped line) of control values. See table e-1 for total numbers of patients with restricted diffusion per structure.

Figure e-2. ADC values of controls and patients



Legend. Marks reflect ADC values (average of both investigators) of patient (red triangles) at first MRI and control persons (black circles) by age. Fifty (black line) and five percent prediction line (black striped line) of control values. See table e-1 for total numbers of patients with restricted diffusion per structure.