

Supplementary Online Content

Reitz C, Cheng R, Rogaeva E, et al. Meta-analysis of the Association Between Variants in *SORL1* and Alzheimer Disease. *Arch Neurol*. 2011;68(1):pages

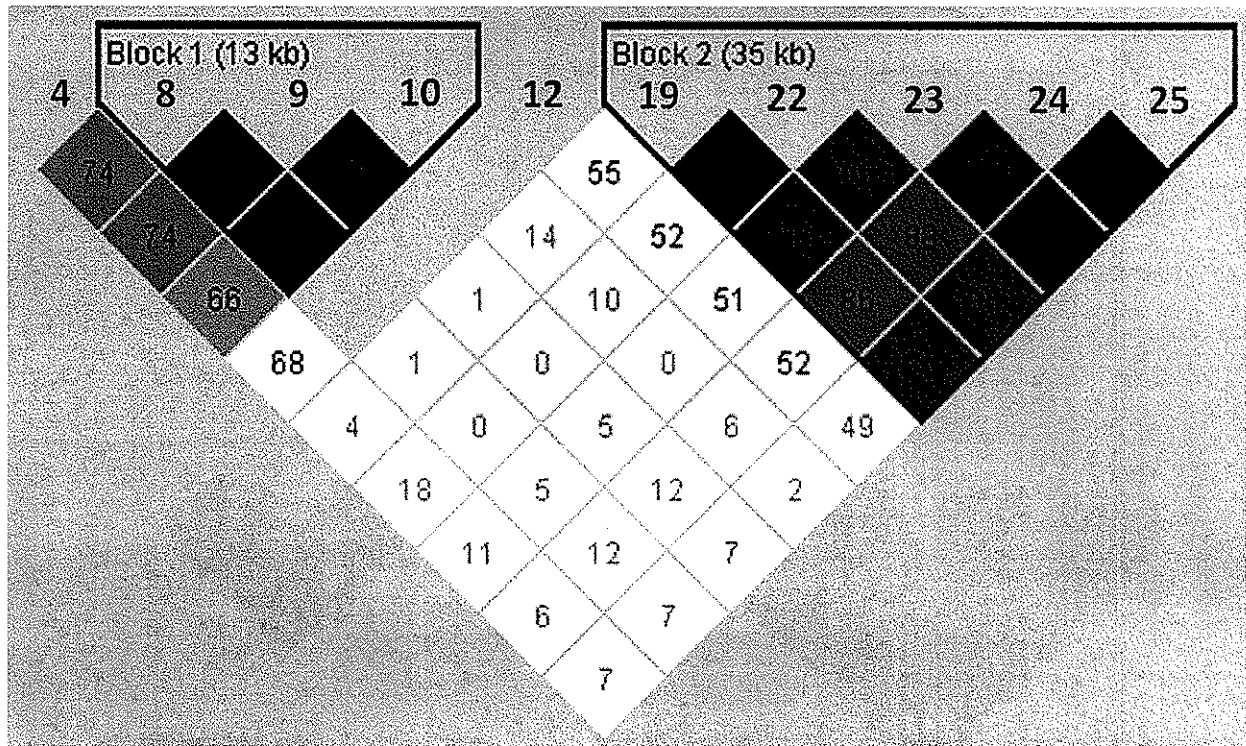
eFigure 1. Linkage disequilibrium pattern in whites (HapMap).

eFigure 2. Linkage disequilibrium pattern in Asians (HapMap).

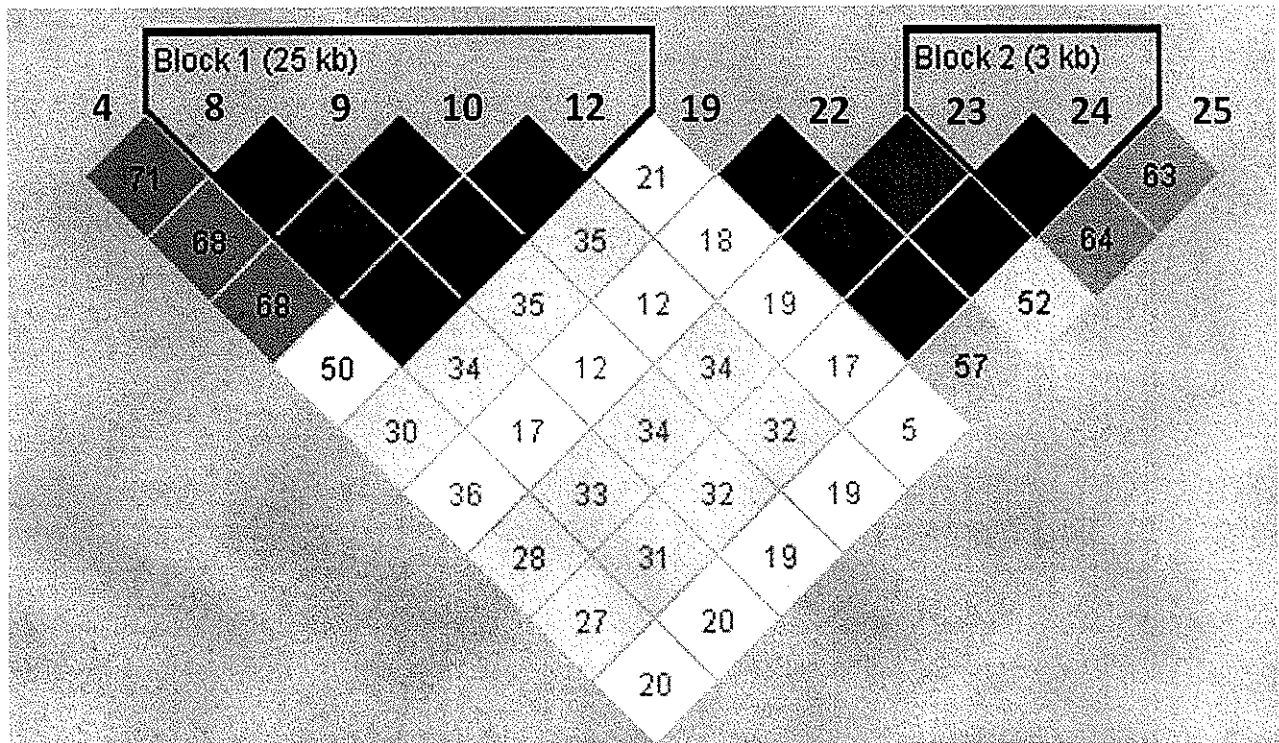
eTable. Results of individual white studies for SNP 8 through 10 (allelic association analyses). * indicates SNP not genotyped.

This supplementary material has been provided by the authors to give readers additional information about their work.

eFigure 1.



eFigure 2.



eTable. Results of Individual White Studies for SNPs 8 through 10 (Allelic Association Analyses)

Study Area	OR (95% CI)		
	SNP 8	SNP 9	SNP 10
Belgium	1.12 (0.94-1.31)	1.08 (0.91-1.28)	1.09 (0.91-1.29)
Canada	1.46 (1.06-2.01)	1.37 (1.02-1.86)	1.32 (0.98-1.77)
France	1.18 (0.91-1.51)	1.18 (0.92-1.52)	1.17 (0.91-1.50)
Germany (Bonn)	*	*	*
Germany (Munich)	*	0.94 (0.78-1.21)	*
Italy	1.13 (0.91-1.40)	1.14 (0.92-1.41)	1.22 (0.98-1.51)
Sweden	1.09 (0.98-1.21)	1.09 (0.99-1.21)	1.08 (0.98-1.20)
The Netherlands	1.04 (0.91-1.18)	1.04 (0.91-1.19)	1.04 (0.91-1.18)
US (Mayo [Autopsy])	1.20 (0.98-1.45)	1.10 (0.97-1.34)	*
US (Mayo [Jacksonville])	1.13 (0.94-1.34)	1.12 (0.94-1.34)	*
US (Mayo [Rochester])	0.97 (0.83-1.13)	0.96 (0.82-1.13)	*
US (Miami/Nashville)	*	0.99 (0.86-1.15)	*
US (New York [Autopsy])	1.73 (1.11-2.68)	1.76 (1.10-2.81)	1.33 (0.83-2.11)
US (New York [Clinical])	1.49 (0.80-2.79)	1.34 (0.69-2.58)	1.01 (0.53-1.91)
US (Pittsburgh)	1.04 (0.92-1.18)	1.02 (0.89-1.15)	1.04 (0.91-1.18)
US (Translational Genomics Research Institute)	0.92 (0.80-1.07)	*	*
UK	*	1.03 (0.94-1.13)	*
Current meta-analysis	1.08 (1.03-1.13)	1.06 (1.02-1.10)	1.08 1.03-1.13

Abbreviations: *, SNP not genotyped; CI, confidence interval; OR, odds ratio.