

## Supplementary Online Content

Ip MS, Domalpally A, Hopkins JJ, Wong P, Ehrlich JS. Long-term effects of ranibizumab on diabetic retinopathy severity and progression. *Arch Ophthalmol*. Published online May 14, 2012. doi:10.1001/archophthalmol.2012.1043.

**eTable.** Baseline fundus photograph characteristics of the fellow eye.

**eFigure 1.** Change from baseline in ETDRS diabetic retinopathy severity level in the study and fellow eyes at month 12.

**eFigure 2.** Change from baseline in ETDRS diabetic retinopathy severity in the study eye at month 12 by baseline severity level.

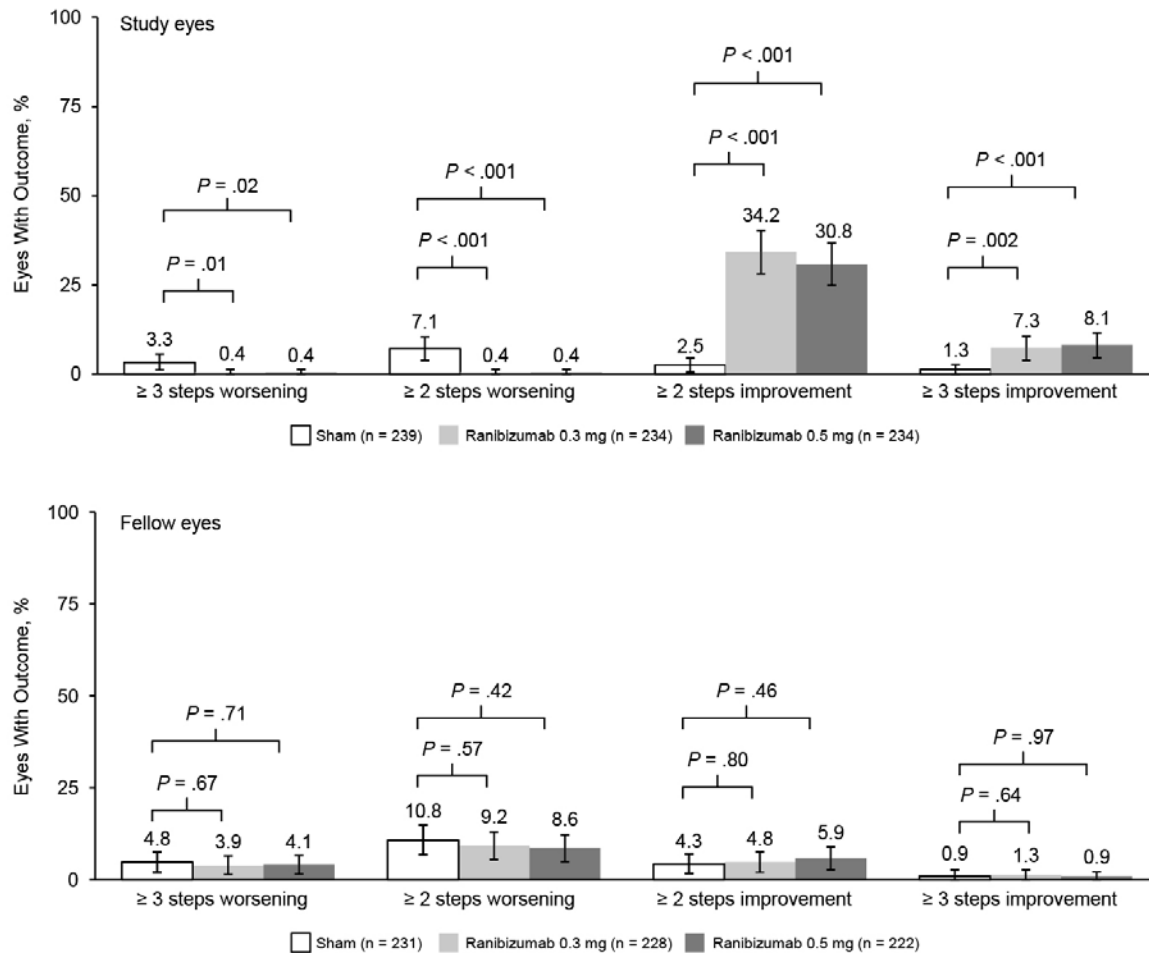
This supplementary material has been provided by the authors to give readers additional information about their work.

**eTable**  
**Baseline Fundus Photograph Characteristics of the Fellow Eye**

Characteristic, n (%)	Pooled Randomized Subjects (RIDE and RISE)		
	Sham (N = 251) <sup>a</sup>	Ranibizumab	
		0.3 mg (N = 244) <sup>a</sup>	0.5 mg (N = 238) <sup>a</sup>
Focal and/or grid photocoagulation for macular edema			
None	47 (18.7)	35 (14.3)	39 (16.4)
Questionable	36 (14.3)	42 (17.2)	37 (15.5)
Definite	159 (63.3)	159 (65.2)	154 (64.7)
Cannot grade	9 (3.6)	8 (3.3)	8 (3.4)
Panretinal photocoagulation			
None	172 (68.5)	162 (66.4)	150 (63.0)
Questionable	3 (1.2)	11 (4.5)	8 (3.4)
Partial scatter or local PC for NV	6 (2.4)	5 (2.0)	6 (2.5)
Complete scatter (+/- local)	54 (21.5)	60 (24.6)	62 (26.1)
Cannot grade	16 (6.4)	6 (2.5)	12 (5.0)
Retinal thickening at center of macula			
None	26 (10.4)	21 (8.6)	31 (13.0)
Questionable	21 (8.4)	24 (9.8)	21 (8.8)
Definite, < 1X reference	7 (2.8)	12 (4.9)	11 (4.6)
Definite, < 2X reference	147 (58.6)	132 (54.1)	122 (51.3)
Definite ≥ 2X reference	12 (4.8)	19 (7.8)	19 (8.0)
Cannot grade	38 (15.1)	36 (14.8)	34 (14.3)
ETDRS DR severity level			
1 – DR severity level 10, 12, (DR absent)	3 (1.2)	2 (0.8)	2 (0.8)
2 – DR severity level 14A-14C, 14Z, 15, 20 (DR questionable, microaneurysms only)	7 (2.8)	5 (2.0)	10 (4.2)
3 – DR severity level 35A-35F (mild NPDR)	46 (18.3)	41 (16.8)	38 (16.0)
4 – DR severity level 43A-43B (moderate NPDR)	45 (17.9)	34 (13.9)	33 (13.9)
5 – DR severity level 47A-47D (moderately severe NPDR)	53 (21.1)	62 (25.4)	55 (23.1)
6 – DR severity level 53A-53E (severe NPDR)	6 (2.4)	7 (2.9)	6 (2.5)
7 – DR severity level 60, 61A, 61B (mild PDR)	55 (21.9)	61 (25.0)	64 (26.9)
8 – DR severity level 65A-65C (moderate PDR)	9 (3.6)	10 (4.1)	8 (3.4)
9 – DR severity level 71A-71D (high-risk PDR)	4 (1.6)	6 (2.5)	4 (1.7)
10 – DR severity level 75 (high-risk PDR)	1 (0.4)	0	0
12 – DR severity level 85A-85B (advanced PDR: posterior fundus obscured, or center of macula detach)	2 (0.8)	0	2 (0.8)
90 – DR severity level 90 (cannot grade)	20 (8.0)	16 (6.6)	16 (6.7)

Abbreviations: DR, diabetic retinopathy; ETDRS, Early Treatment Diabetic Retinopathy Study; NPDR, nonproliferative DR; NV, new vessels; PC, photocoagulation; PDR, proliferative DR.

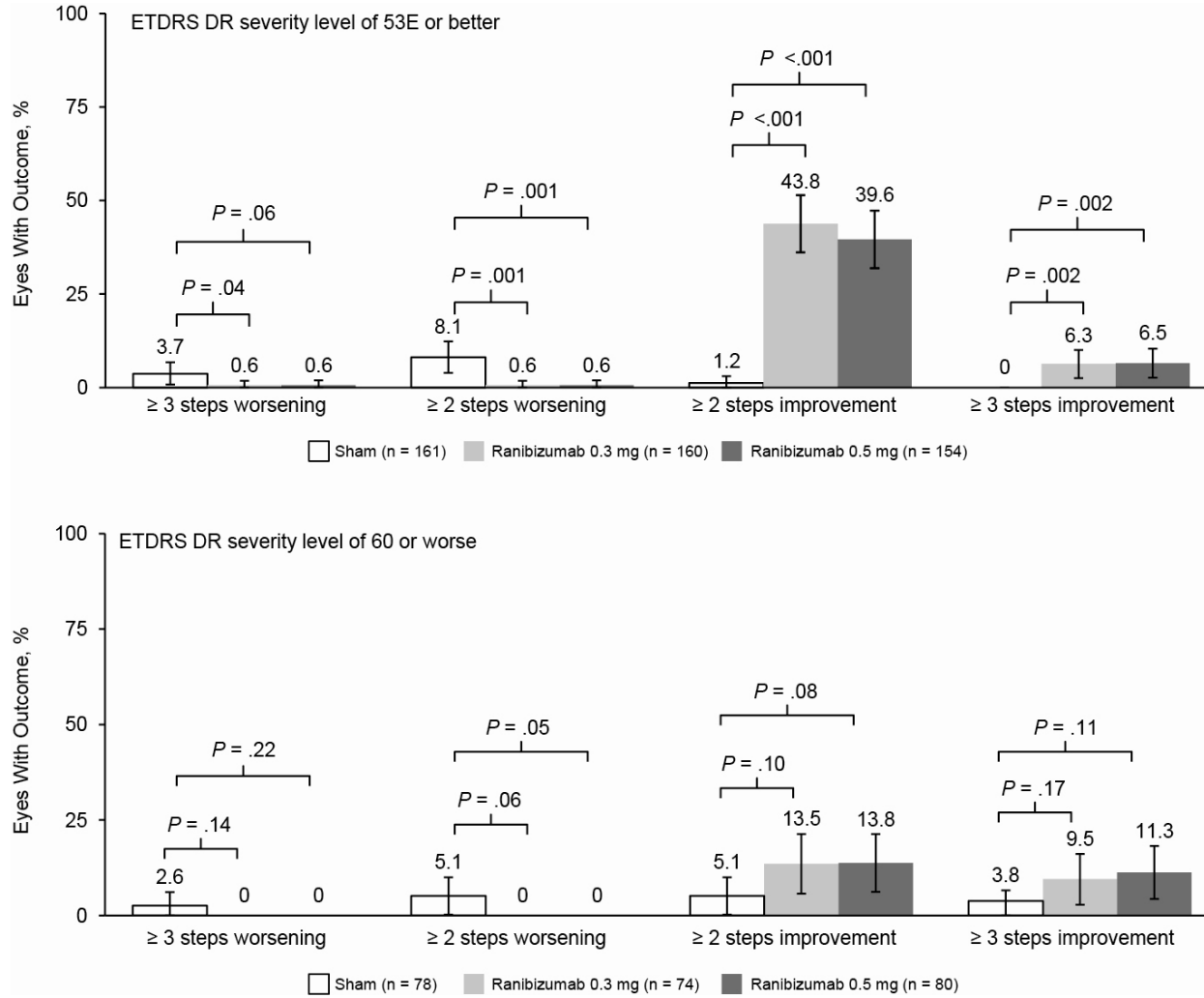
<sup>a</sup>Randomized subjects with baseline fundus photography characteristics of the fellow eye.



**eFigure 1. Change from baseline in ETDRS diabetic retinopathy severity level in the study and fellow eyes at month 12**

Vertical bars are 95% confidence intervals (unadjusted).

Abbreviations: DME, diabetic macular edema; ETDRS, Early Treatment Diabetic Retinopathy Study.



**eFigure 2. Change from baseline in ETDRS diabetic retinopathy severity in the study eye at month 12 by baseline severity level.**

Vertical bars are 95% confidence intervals (unadjusted).

Abbreviations: DME, diabetic macular edema; DR, diabetic retinopathy. ETDRS, Early Treatment Diabetic Retinopathy Study.