

Supplementary Online Content

Klein R, Myers CE, Meuer SM, et al. Risk alleles in *CFH* and *ARMS2* and the long-term natural history of age-related macular degeneration: the Beaver Dam Eye Study. *Arch Ophthalmol*. Published online November 9, 2012. doi:10.1001/jamaophthalmol.2013.713.

eFigure 1. The Beaver Dam five-step severity scale for age-related macular degeneration

eFigure 2. Number of individuals included in analyses at each pair of consecutive Beaver Dam Eye Study examinations

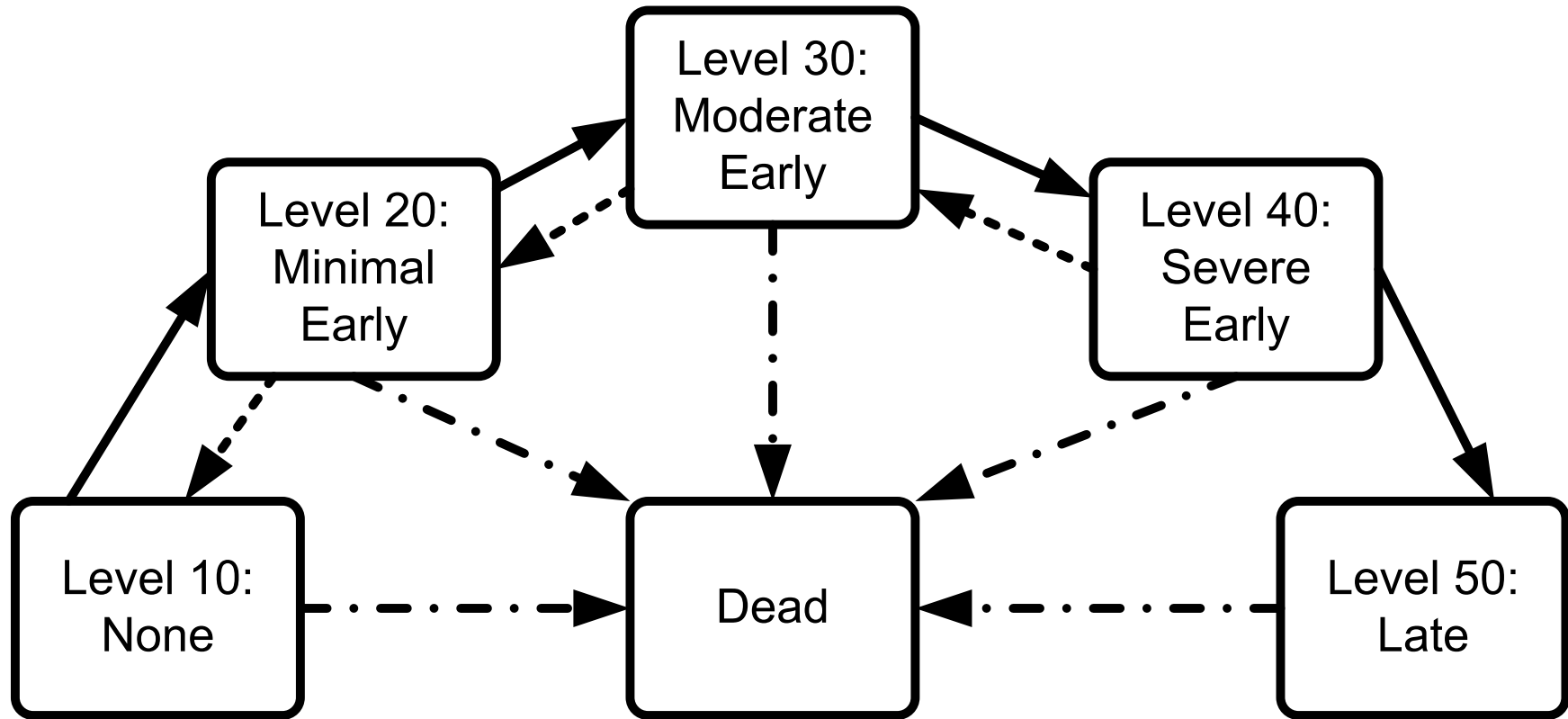
eFigure 3. Pigmentary abnormality scale describing increasing severity of retinal pigmentary abnormalities

eFigure 4. Drusen size scale describing categories of increasing drusen size

eFigure 5. Drusen type scale describing increasing severity of type of drusen

This supplementary material has been provided by the authors to give readers additional information about their work.

eFigure 1. The Beaver Dam five-step severity scale for age-related macular degeneration.



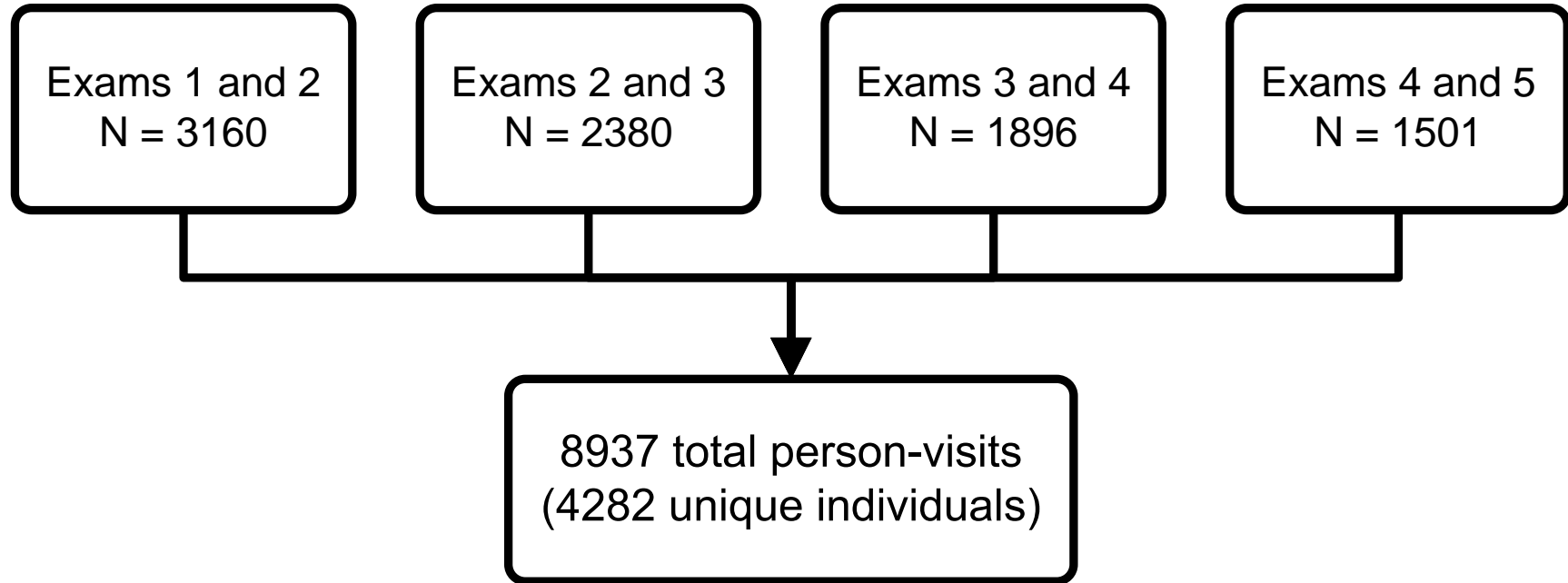
— Progression

- - - - Regression

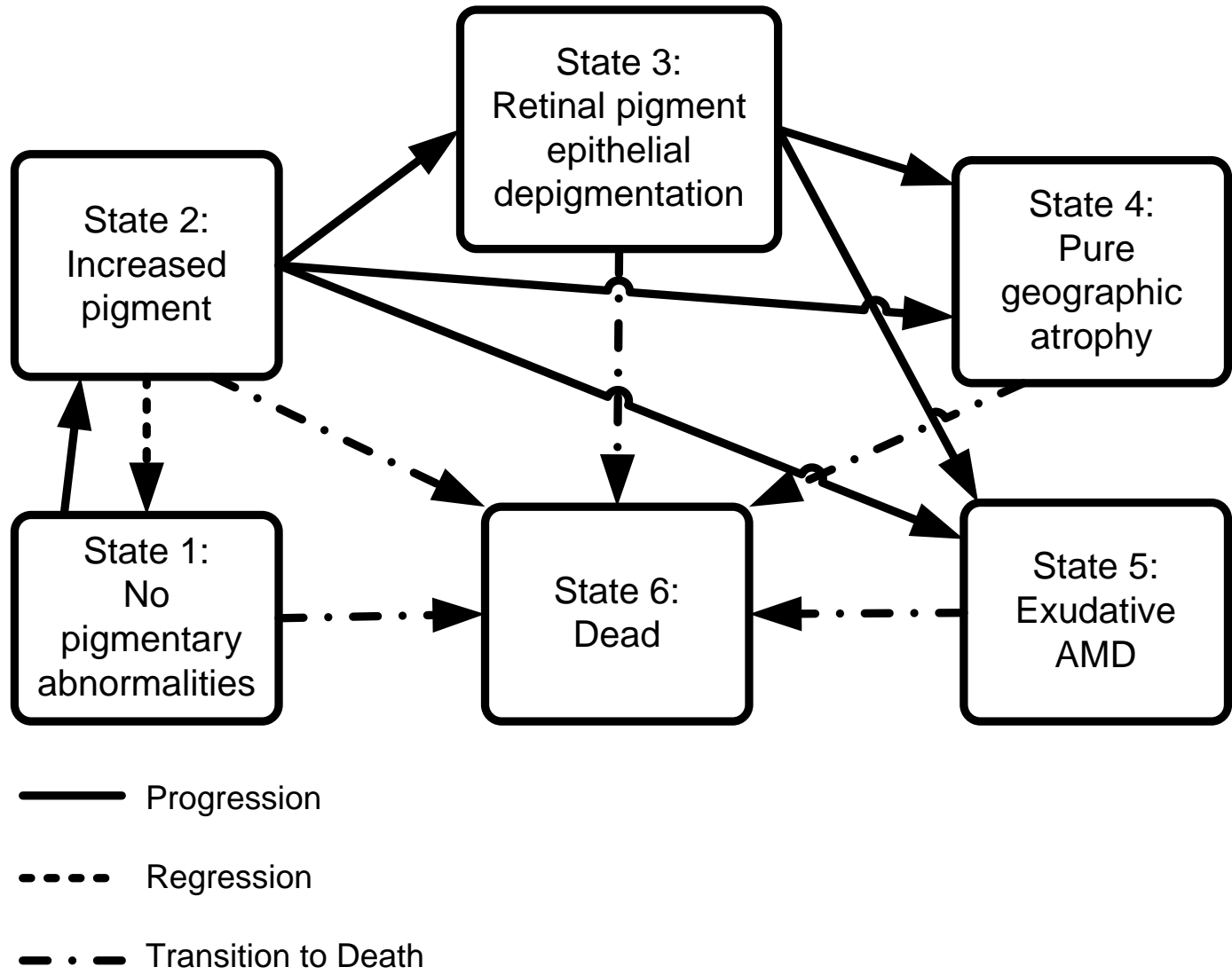
- . - Transition to Death

Arrows indicate possible transitions along the scale.

eFigure 2. Number of individuals included in analyses at each pair of consecutive Beaver Dam Eye Study examinations.

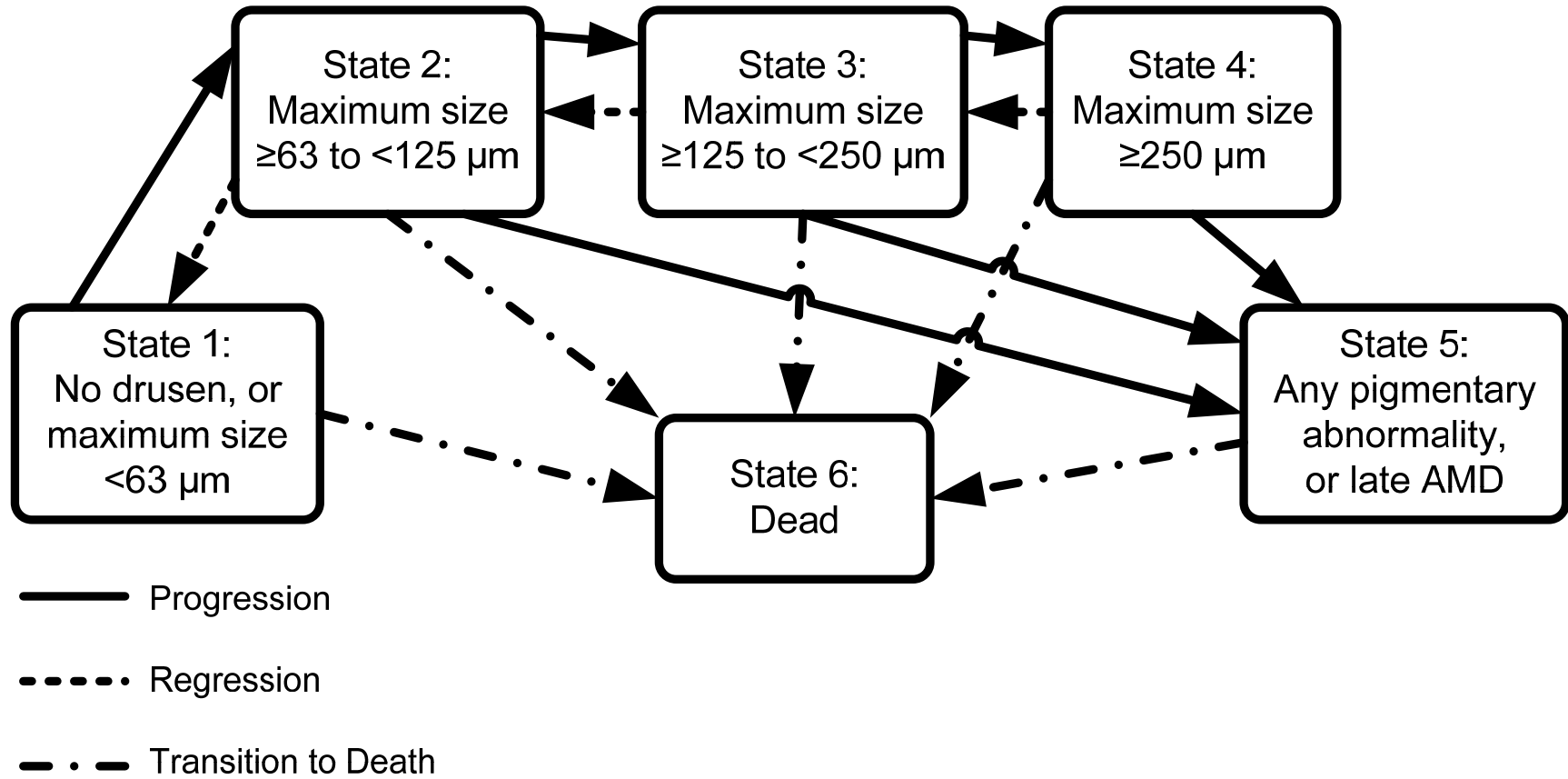


eFigure 3. Pigmentary abnormality scale describing increasing severity of retinal pigmentary abnormalities.



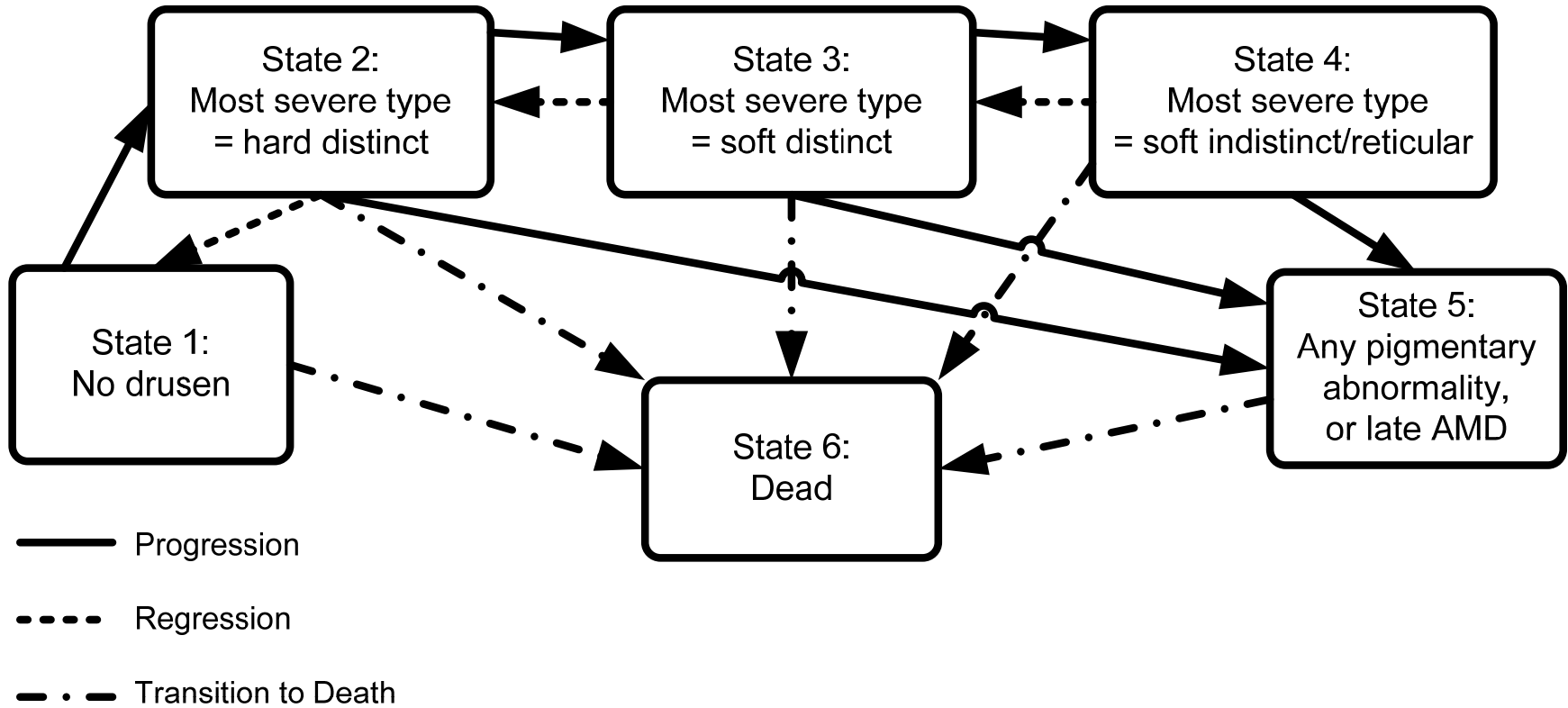
Arrows indicate possible transitions along the scale. AMD, age-related macular degeneration.

eFigure 4. Drusen size scale describing categories of increasing drusen size.



Arrows indicate possible transitions along the scale. AMD, age-related macular degeneration.

eFigure 5. Drusen type scale describing increasing severity of type of drusen.



Arrows indicate possible transitions along the scale. AMD, age-related macular degeneration.