

## Supplementary Online Content

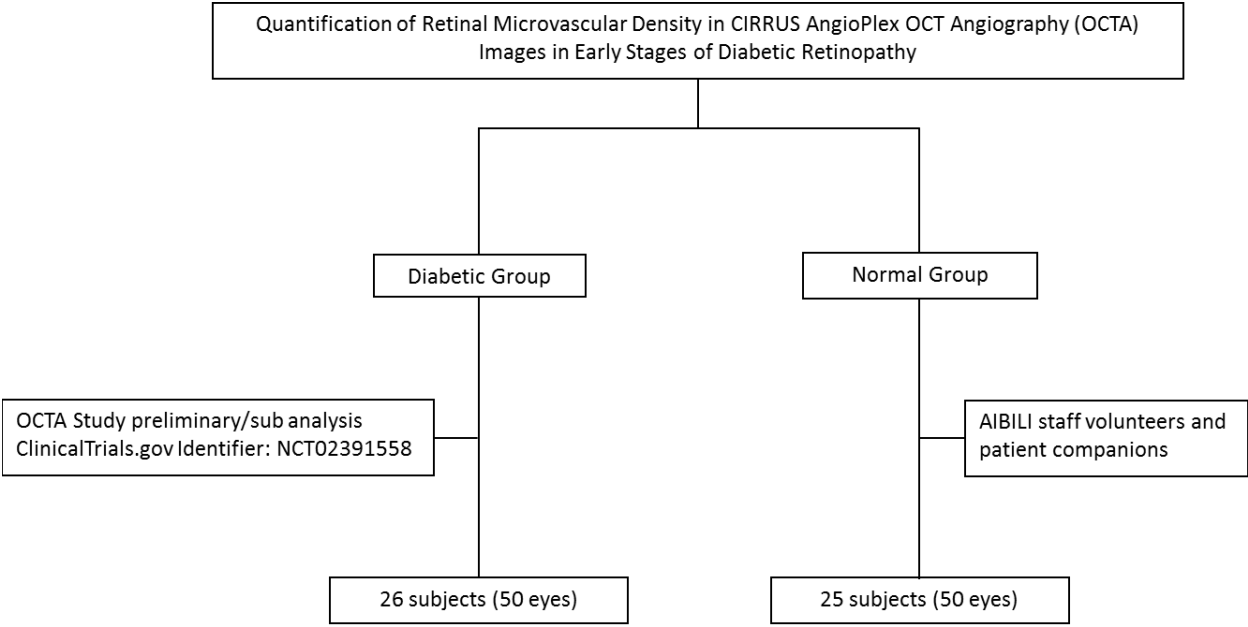
Durbin MK, An L, Shemonski ND, et al. Quantification of retinal microvascular density in optical coherence tomographic angiography images in diabetic retinopathy. *JAMA Ophthalmol*. Published online March 16, 2017.  
doi:10.1001/jamaophthalmol.2017.0080

**eFigure.** CONSORT Flow Diagram for Clinical Study

**eTable.** Descriptive Statistics for Density Measurements Based on the DRL With and Without Correcting for Decorrelation Tails, in Both Groups

This supplementary material has been provided by the authors to give readers additional information about their work.

**eFigure.** CONSORT Flow Diagram for Clinical Study



**eTable.** Descriptive Statistics for Density Measurements Based on the DRL With and Without Correcting for Decorrelation Tails, in Both Groups

|                        |               | Perfusion<br>Density (unitless) in DRL |                      |  | Vessel<br>Density (mm <sup>-1</sup> ) in DRL |                      |   |
|------------------------|---------------|--|----------------------|--|--|----------------------|---|
|                        |               | Without tail<br>removal                | With tail<br>removal | <i>P</i> Value for with<br>and without tail<br>removal | Without tail<br>removal                      | With tail<br>removal | <i>P</i> Value for<br>with and<br>without tail<br>removal |
| Normal<br>Eye<br>Group | <b>Mean</b>   | 0.340                                  | 0.337                | .74  | 18.4   | 17.7                 | .03*  |
|                        | <b>Sd</b>     | 0.034                                  | 0.034                |  | 1.9  | 1.9                  |   |
|                        | <b>Min</b>    | 0.242                                  | 0.234                |  | 13.5   | 11.8                 |   |
|                        | <b>Max</b>    | 0.388                                  | 0.380                |  | 21.2   | 20.5                 |   |
|                        | <b>Median</b> | 0.343                                  | 0.346                |  | 18.6   | 18.1                 |   |
|                        | <b>P25</b>    | 0.323                                  | 0.323                |  | 17.4   | 16.7                 |   |
|                        | <b>P75</b>    | 0.366                                  | 0.363                |  | 20.0   | 18.9                 |   |
| Diabetic<br>Group      | <b>Mean</b>   | 0.322                                  | 0.320                | .67  | 17.1   | 16.4                 | .048*   |
|                        | <b>Sd</b>     | 0.034                                  | 0.033                |  | 1.9  | 1.9                  |   |
|                        | <b>Min</b>    | 0.226                                  | 0.224                |  | 11.9   | 11.3                 |   |
|                        | <b>Max</b>    | 0.374                                  | 0.376                |  | 20.3   | 19.6                 |   |
|                        | <b>Median</b> | 0.319                                  | 0.325                |  | 16.9   | 16.2                 |   |
|                        | <b>P25</b>    | 0.296                                  | 0.293                |  | 15.5   | 15.0                 |   |
|                        | <b>P75</b>    | 0.352                                  | 0.347                |  | 18.8   | 17.9                 |   |
| <i>P</i> Value         |               | .007*                                  | .009*                |  | <.001*                                       | <.001*               |   |