

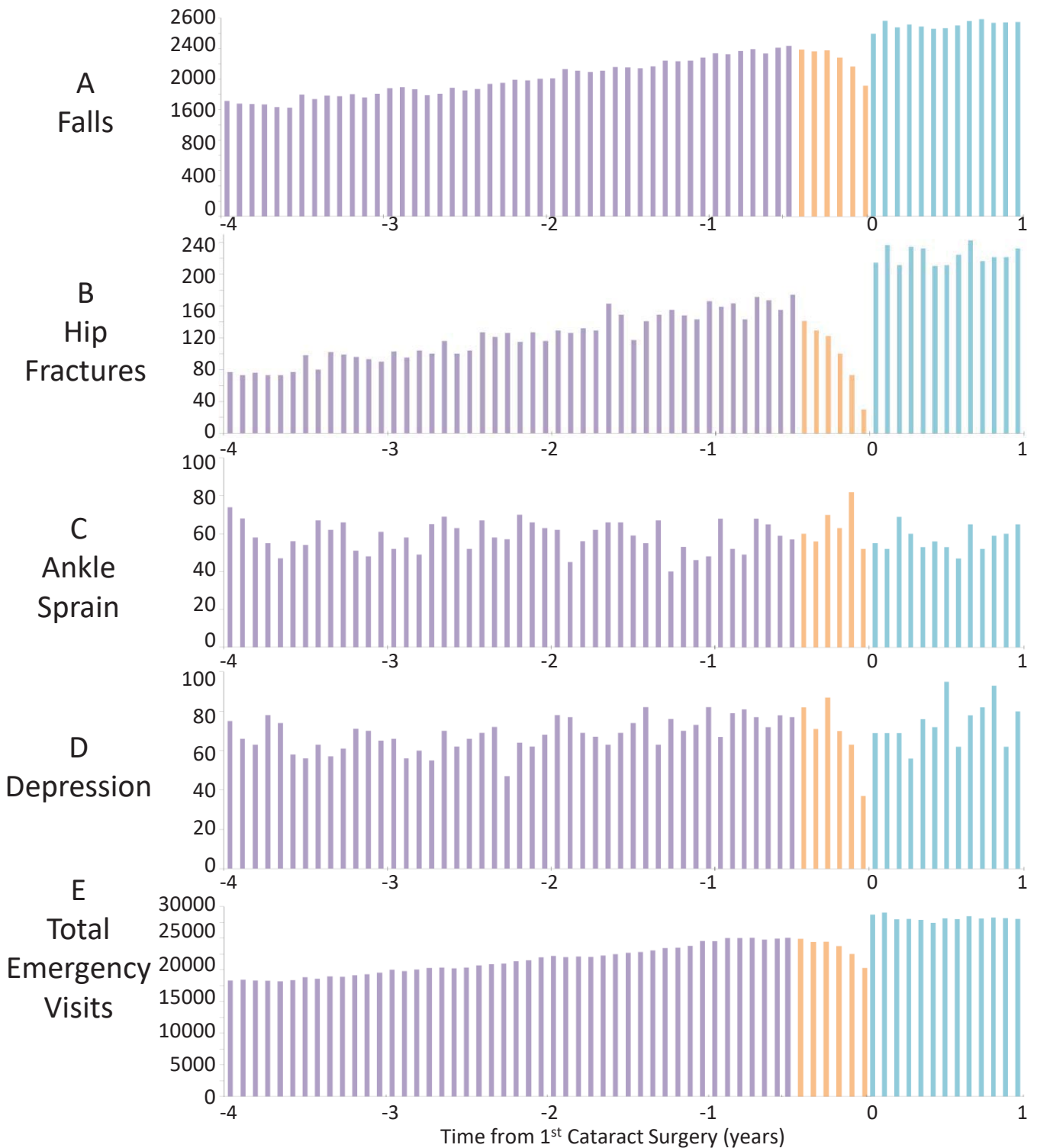
Supplementary Online Content

Schlenker MB, Thiruchelvam D, Redelmeier DA. Association of Cataract Surgery With Traffic Crashes. *JAMA Ophthalmol*. Published online June 28, 2018. doi:10.1001/jamaophthalmol.2018.2510

eFigure. Falls, Hip Fractures, Ankle Sprains, Depression, and Emergency Visits

This supplementary material has been provided by the authors to give readers additional information about their work.

SUPPLEMENTARY APPENDIX eFIGURE 1. Falls, Hip Fractures, Ankle Sprains, Depression, and Emergency Visits



X axis divided into 28 day segments. Time zero defined as the patient's first cataract surgery. Y axis shows the rate of emergency department visits for panel A) falls, B) hip fractures, C) ankle sprains, D) depression, and E) total emergency visits. Induction interval denoted in orange color is excluded from analysis due to potential selection bias (depressed particularly in panel A B, and E). Comparing the Baseline interval to the Subsequent interval, taking into account any time/aging trends (which were strong for A, B, and E) there was no change in the risk of each outcome following cataract surgery.