

Supplementary Online Content

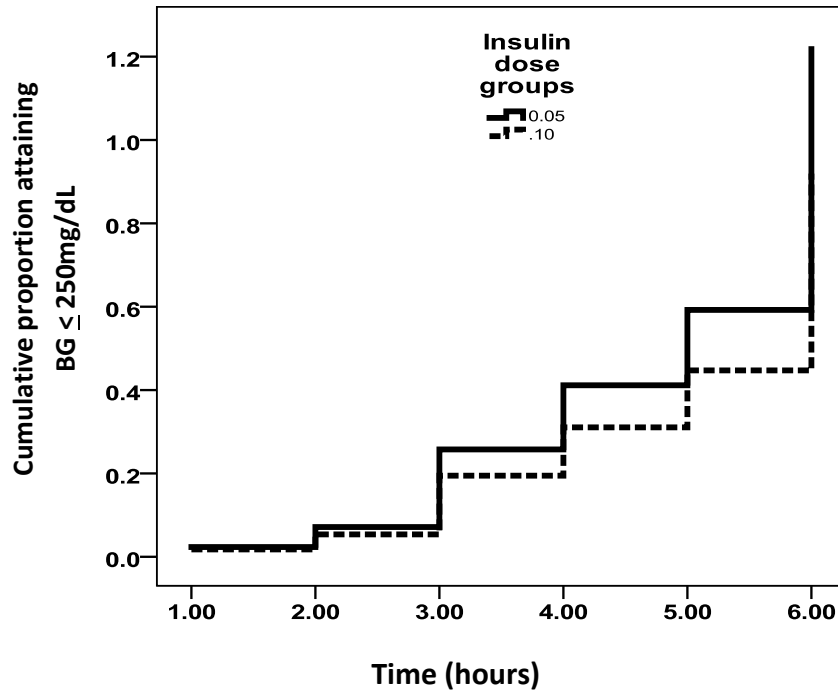
Nallasamy K, Jayashree M, Singhi S, Bansal A. Low-dose vs standard-dose insulin in pediatric diabetic ketoacidosis: a randomized clinical trial. *JAMA Pediatr*. Published online September 29, 2014.
doi:10.1001/jamapediatrics.2014.1211.

eFigure 1. Hazard Curves Plot for Blood Glucose Decrease Until 250 mg/dL or Less

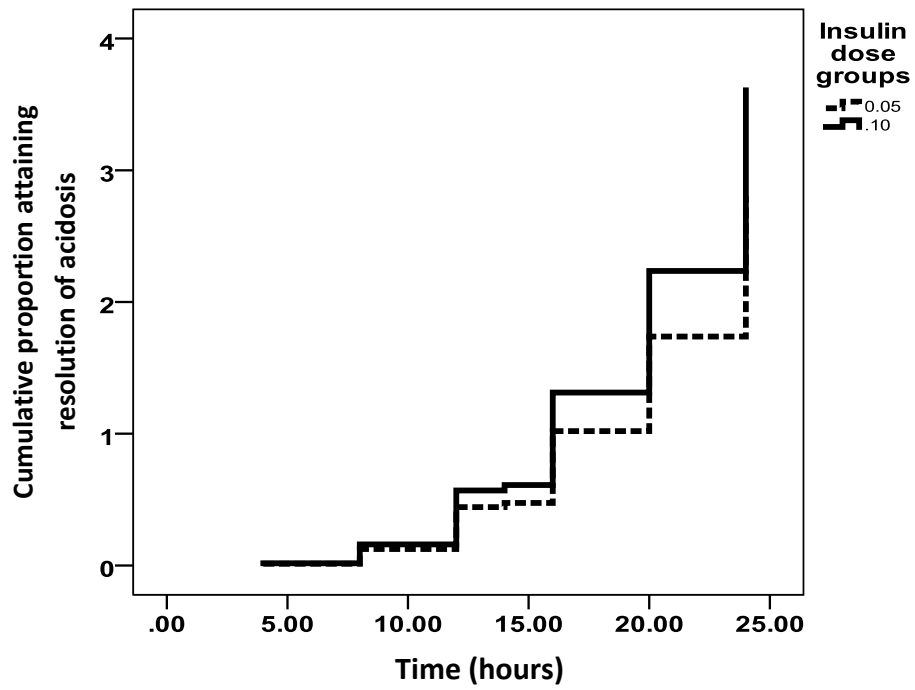
eFigure 2. Hazard Curves Plot for Resolution of Acidosis

eTable. Comparison of Outcome Variables in Malnourished Children

This supplementary material has been provided by the authors to give readers additional information about their work.



eFigure 1. Hazard curves plot showing cumulative incidence of achieving blood glucose of ≤ 250 mg/dL at each time point stratified by insulin dose groups



eFigure 2. Hazard curves plot showing cumulative incidence of achieving resolution of acidosis since start of insulin infusion to 24 hours of study period

eTable. Comparison of outcome variables in malnourished children

	Low dose group (n= 7)	Standard dose group (n =8)
Time to reach BG \leq 250mg/dl (hours)	6.4 (2.8)	5.9 (2.5)
Rate of BG fall to \leq 250mg/dl (mg/dL/h)	45.7	51.4
Time to resolution of acidosis (hours)	14.9 (5.0)	14.3 (6.4)
Hypokalemia (n)	2 (28%)	7 (88%)
Hypoglycemia (n)	0 (0%)	2 (25%)