

Supplementary Online Content

Roest AM, de Jonge P, Williams CD, de Vries YA, Schoevers RA, Turner EH. Reporting bias in clinical trials investigating the efficacy of second-generation antidepressants in the treatment of anxiety disorders: a report of 2 meta-analyses. *JAMA Psychiatry*. Published online March 25, 2015. doi:10.1001/jamapsychiatry.2015.15.

eTable 1. Number of Trials Reviewed by the FDA for Approved SSRIs and SNRIs

eTable 2. Spin: Conclusion FDA Review Versus Conclusion in Matching Journal Article

eFigure 1. Flow Diagram

eFigure 2. Forest Plots for GAD, SAD, and PTSD

This supplementary material has been provided by the authors to give readers additional information about their work.

eTable 1 Number of trials reviewed by the FDA for approved SSRIs and SNRIs

	Drug	GAD	PD	SAD	PTSD	OCD	Total
SSRIs	escitalopram	3	—	—	—	—	3
	paroxetine	3	4	3	3	3	16
	paroxetine CR	—	3	1	—	—	4
	fluoxetine	—	*	—	—	3	3
	sertraline	—	4	3	4	4	15
	fluvoxamine	—	—	—	—	2	2
	fluvoxamine CR	—	—	2	—	1	3
SNRIs	duloxetine	3	—	—	—	—	3
	venlafaxine ER	2	4	2	—	—	8
Number of indications per disorder		4	4	5	2	5	20
Total trials per disorder		11	15	11	7	13	57

FDA= Food and Drug Administration; GAD= generalized anxiety disorder; OCD= obsessive compulsive disorder; PD= panic disorder; PTSD= posttraumatic stress disorder; SNRIs= serotonin norepinephrine reuptake inhibitors; SSRIs = selective serotonin reuptake inhibitors

“—” indicates drug-indication combination not approved by FDA (off-label indication)

* Unable to obtain drug approval package for present study (see text)

eTable 2. Spin: Conclusion FDA review versus conclusion in matching journal article

Indication	FDA ^a	Literature ^b
Venlafaxine ER for PD	391 “The results of study 391 ^c do not provide adequate evidence of the anti-panic efficacy of venlafaxine ER versus placebo over 10 weeks of treatment”	Bradwejn, 2005 “Venlafaxine ER seems to be effective and well tolerated in the short-term treatment of PD”
Fluoxetine for OCD	E079 “This trial failed to show significant fluoxetine-placebo differences on any of the scales. A few contrasts were marginal, with p-values between 0.05 and 0.10, but considering the number of scales and number of tests done, I attach no importance to them.”	Montgomery, 1993 “This study supports the growing evidence for the safety and efficacy of fluoxetine in the treatment of OCD.”
Sertraline for OCD	237/248 “Although the plots of group means over time appear to show that sertraline beats placebo, differences between group means were inconsistent among the various time points, with significance appearing somewhat early in the study and frequently disappearing towards week 8. It would be difficult to characterize these results as positive, and at best we might call them supportive. Calling it a failed study may be more accurate.”	Chouinard, 1990 “Results of the Y-BOCS total score, the NIMH score, and the global severity and improvement scores demonstrated a statistically significant superiority of sertraline compared with placebo.”

PD= panic disorder; OCD= obsessive compulsive disorder

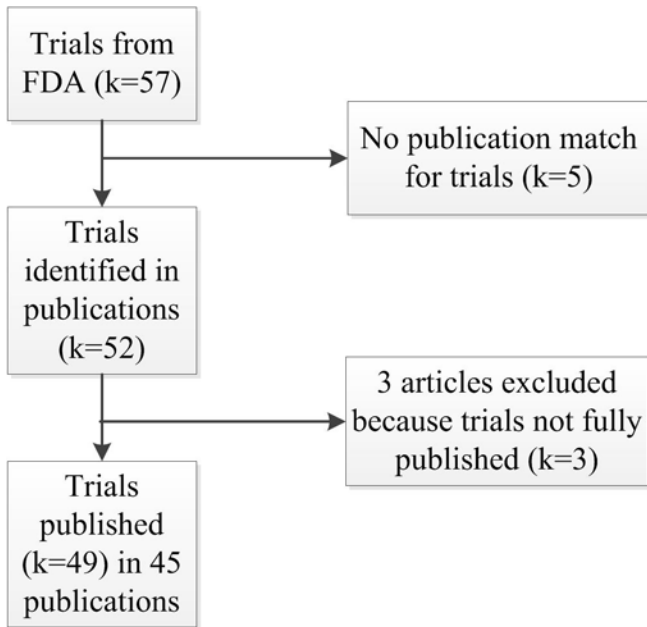
^a Conclusions FDA are extracted from the medical review (trial 391) or the statistical review (trial E079; trial 237/248)

^b Conclusions journal articles are extracted from article abstract

^c Number 353 was changed to 391 since there appears to be a typographical error in the FDA medical review (conclusion regarding trial 353 is included on another page of the review).

eFigure 1 Flow diagram

Flow diagram of trials reviewed by the FDA and matching journal articles



FDA= Food and Drug Administration

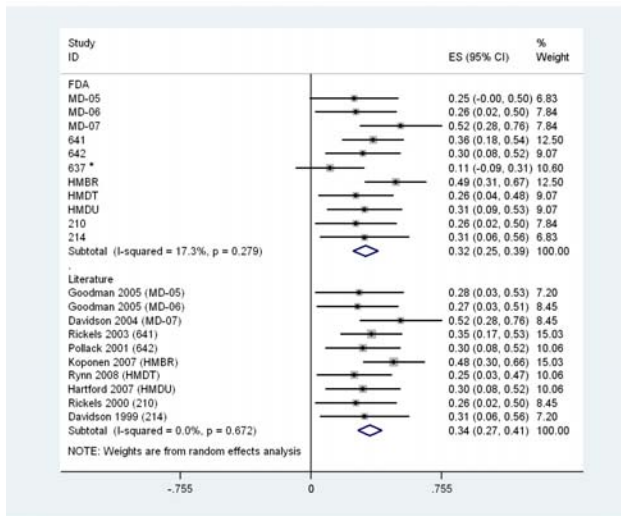
eFigure 2 Forest plots for GAD, SAD, and PTSD

Forest plots of effect size values (Hedges's g) for GAD, SAD and PTSD separate for results according to FDA and according to scientific literature.

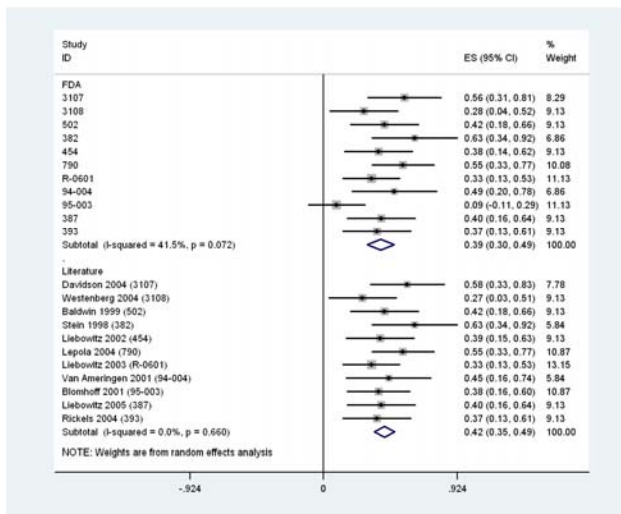
FDA= Food and Drug Administration; GAD= generalized anxiety disorder; SAD= social anxiety disorder; PTSD= posttraumatic stress disorder

* not published

GENERALIZED ANXIETY DISORDER



SOCIAL ANXIETY DISORDER



POSTTRAUMATIC STRESS DISORDER

