

Supplementary Online Content

Olfson M, King M, Schoenbaum M. Treatment of young people with antipsychotic medications in the United States. *JAMA Psychiatry*.
Published online July 1, 2015. doi:10.1001/jamapsychiatry.2015.0500.

eTable 1. Classification of First- and Second-Generation Antipsychotics

eTable 2. *ICD-9-CM* Codes Used to Define Mental Disorder Groups and *CPT* Codes Used to Define Psychotherapy

eFigure 1. Percentage of Male Population With Any Antipsychotic Medication Use by Sex and Age, United States

eFigure 2. Percentage of Female Population With Any Antipsychotic Medication Use by Sex and Age, United States

This supplementary material has been provided by the authors to give readers additional information about their work

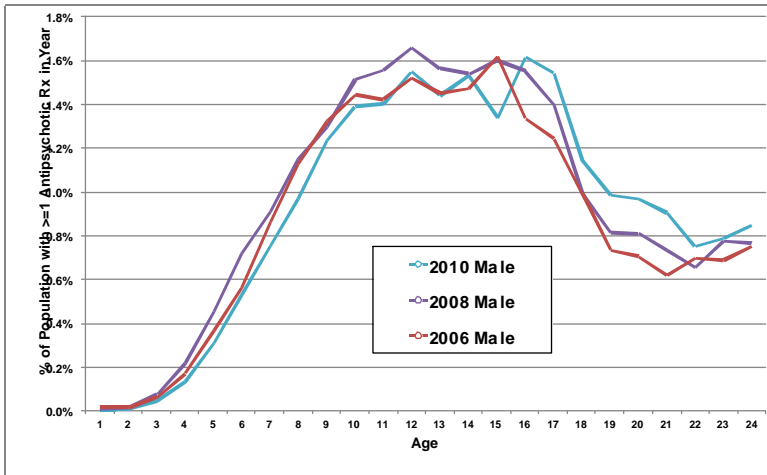
eTable 1. Classification of First- and Second-Generation Antipsychotics

First-Generation Agents	Second-Generation Agents
Chlorpromazine	Aripiprazole
Fluphenazine	Asenapine
Haloperidol	Clozapine
Loxapine	lloperidone
Molindone	Lurasidone
Perphenazine	Olanzapine
Pimozide	Paliperidone
Thioridazine	Quetiapine
Thiothixene	Risperidone
Trifluoperazine	Ziprasidone

eTable 2. ICD-9-CM codes used to define mental disorder groups and CPT codes used to define psychotherapy

Mental Disorder Group	ICD-9-CM Codes
Any mental disorder	290-319
Schizophrenia	295.xx
Bipolar disorder	296.0x,296.1x, 296.4x,296.5x,296.6x,296.7x,296.8x,301.13
Autism/mental retardation	299.xx, 317.xx, 318.xx, 319.xx
ADHD	314.xx
Disruptive behavior disorders	312.0x, 312.1x, 312.2x, 312.3x, 312.4x, 312.81, 312.82, 312.89, 312.9x, 313.81
Depression disorders	296.2x, 296.3x, 298.0x, 300.4x,311.xx
Anxiety disorders	300.0x, 300.2x, 309.21, 309.81, 308.3x, 293.84
Substance use disorders	291.xx, 292.xx, 303.xx, 304.xx, 305.xx, 648.3x, 655.5x, 760.7x, 965.0x, 967.xx, 980.0x
Adjustment disorders	309.0x, 309.24, 309.3x, 309.4x, 309.9x, 308.0x, 308.1x, 308.2x, 308.4x, 308.9x
Other mental disorders	290-319, not defined above.
Psychotherapy	CPT Codes
Psychotherapy Services	90804-90819, 90821-29, 90832, 90834, 90837, 90839, 90840, 90845-90847, 90849, 90853, 90857, 90875, 90876, 97770

eFigure 1. Percentage of male population with any antipsychotic medication use by sex and age, United States



eFigure 2. Percentage of female population with any antipsychotic medication use by sex and age, United States

