

Supplementary Online Content

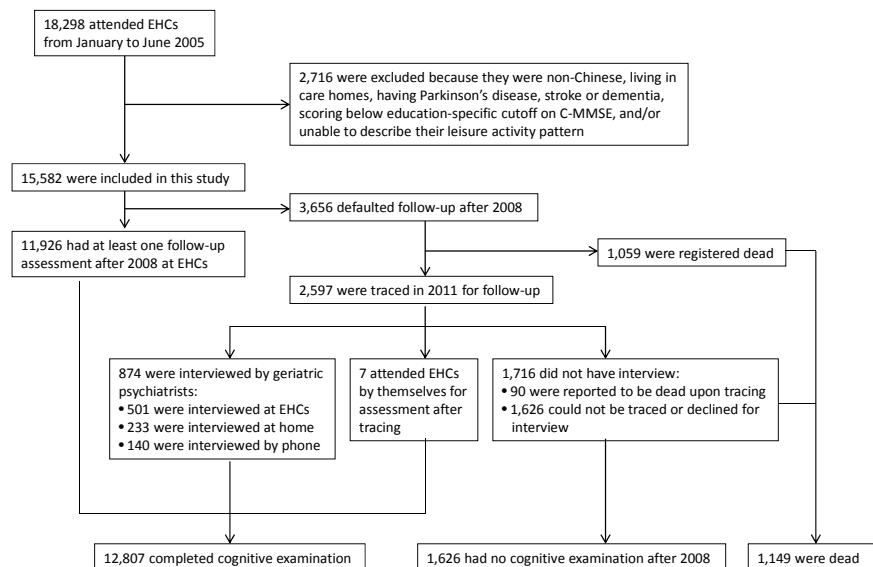
Lee ATC, Richards M, Chan WC, Chiu HFK, Lee RSY, Lam LCW. Association of daily intellectual activities with lower risk of incident dementia among older Chinese adults. *JAMA Psychiatry*. Published online May 30, 2018.
doi:10.1001/jamapsychiatry.2018.0657

eFigure 1. Flow Diagram of Inclusion and Follow-up of Participants in this Study

eFigure 2. Distribution of Total Number of Follow-up vs Age at Baseline

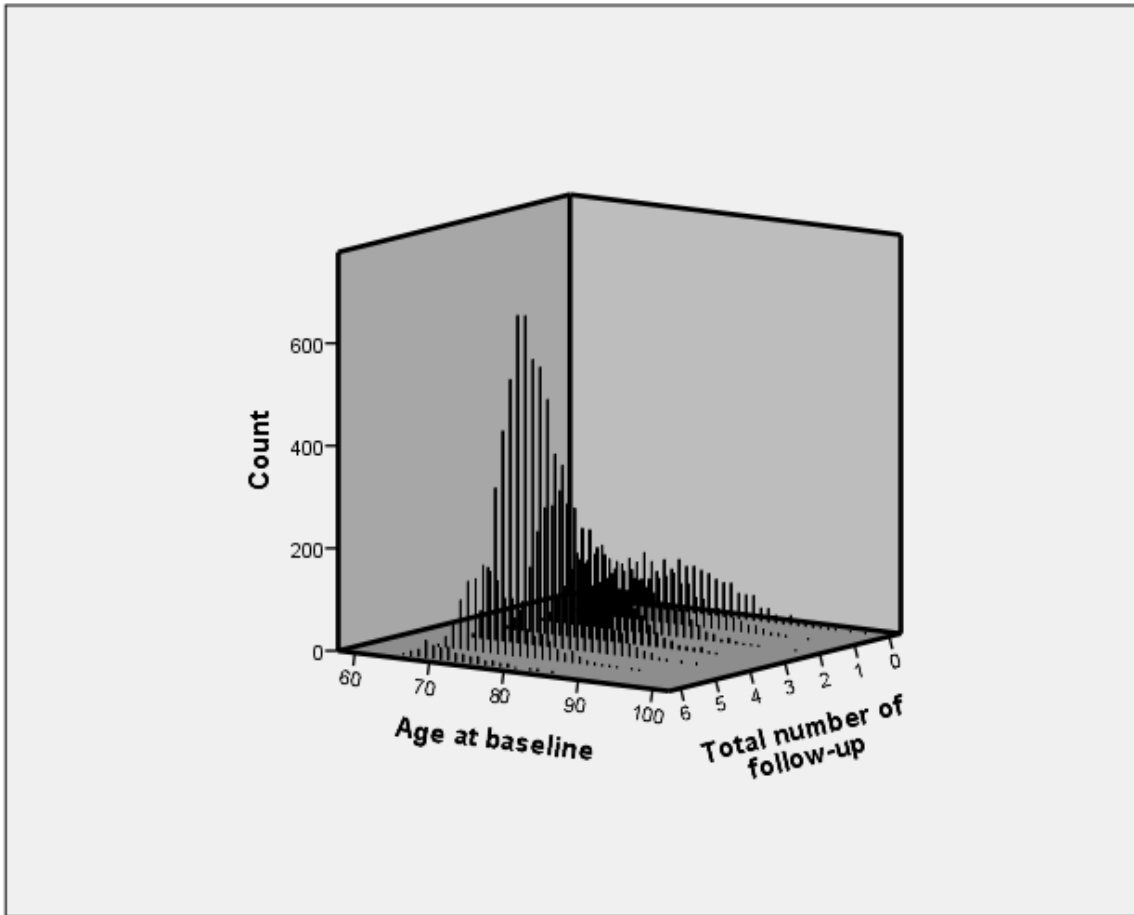
eFigure 3. Distribution of Years of Follow-up vs Age at Baseline

This supplementary material has been provided by the authors to give readers additional information about their work.

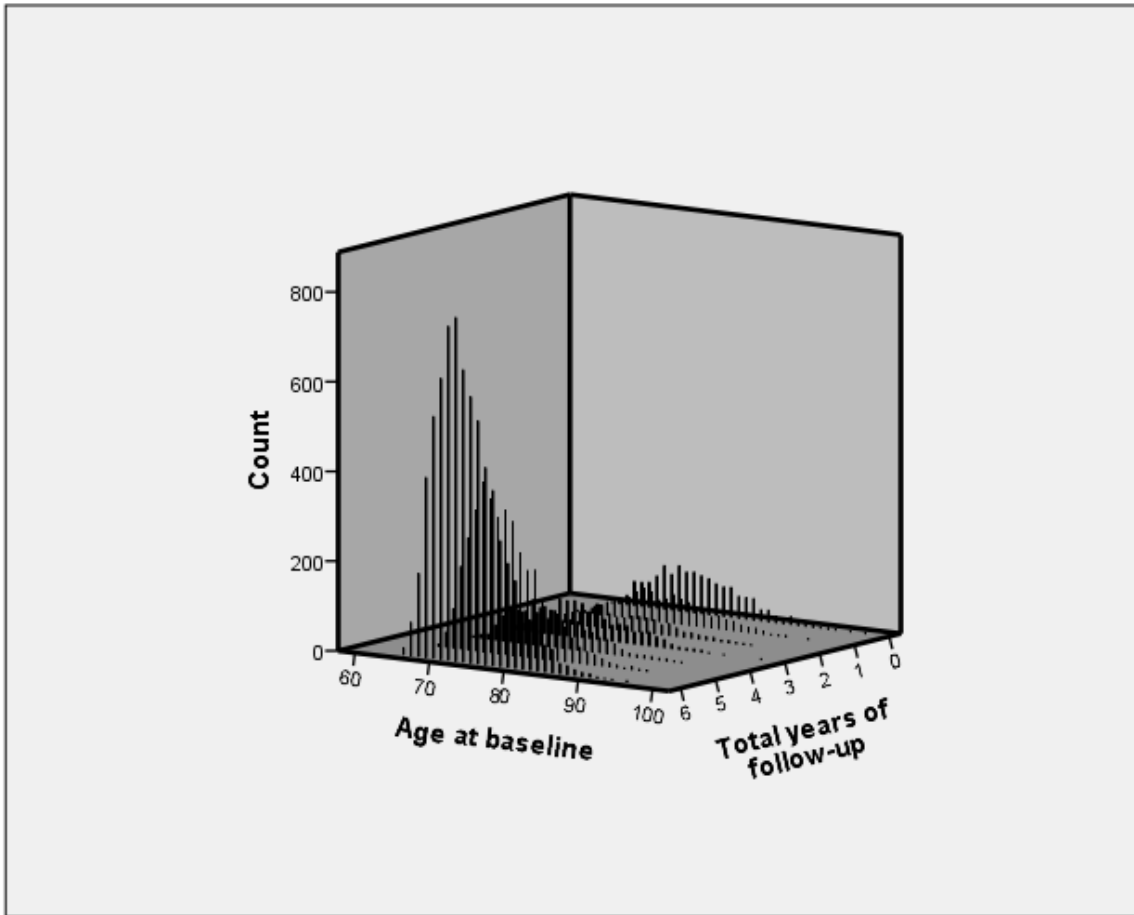


eFigure 1. Flow Diagram of Inclusion and Follow-up of Participants in this Study

EHCs, Elderly Health Centres; C-MMSE, Cantonese version of the Mini-mental State Examination



eFigure 2. Distribution of Total Number of Follow-up vs Age at Baseline



eFigure 3. Distribution of Years of Follow-up vs Age at Baseline