

## Supplementary Online Content

Mclsaac DI, Bryson GL, van Walraven C. Association of frailty and 1-year postoperative mortality following major elective noncardiac surgery: a population-based cohort study. *JAMA Surg*. Published online January 20, 2015. doi:10.1001/jamasurg.2015.5085.

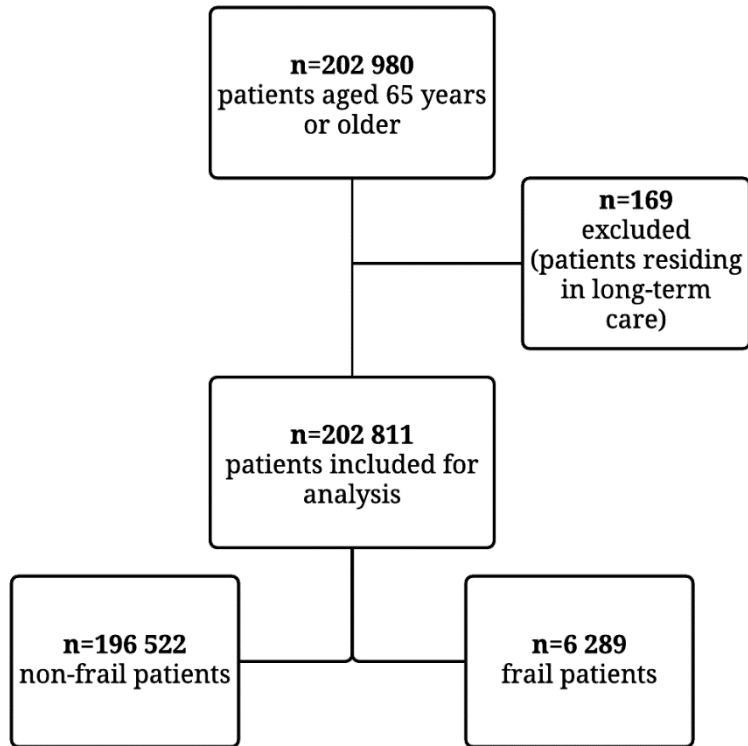
**eFigure 1.** Flow Diagram Demonstrating Cohort Creation

**eFigure 2.** Kaplan Meier Survival Curves for 1 Year Mortality

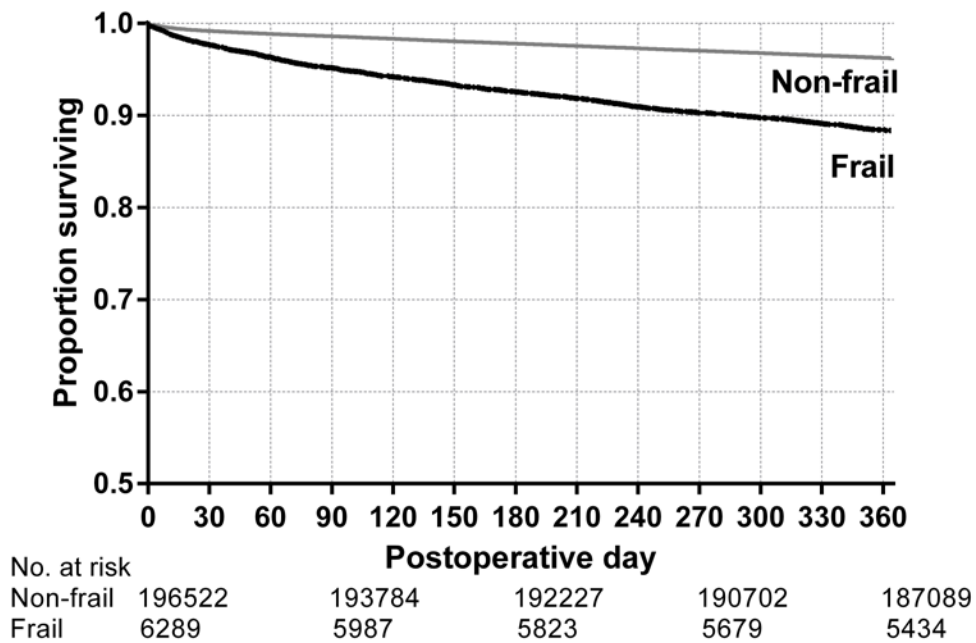
**eTable.** Frailty-Defining Diagnoses in Johns Hopkins ACG Frailty Indicator

This supplementary material has been provided by the authors to give readers additional information about their work.

**eFigure 1.** Flow Diagram Demonstrating Cohort Creation



**eFigure 2.** Kaplan Meier Survival Curves for 1 Year Mortality



**eTable.** Frailty-Defining Diagnoses in Johns Hopkins ACG Frailty Indicator

<b>Frailty Concept Diagnoses (Examples)</b>	
Malnutrition	Nutritional Marasmus Other severe protein-calorie malnutrition
Dementia	Senile dementia with delusional or depressive features Senile dementia with delirium
Impaired Vision	Profound impairment, both eyes Moderate or severe impairment, better eye/lesser eye: profound
Decubitus Ulcer	Decubitus Ulcer
Incontinence of Urine	Incontinence without sensory awareness Continuous leakage
Loss of Weight	Abnormal loss of weight and underweight Feeding difficulties and mismanagement Incontinence of Feces Incontinence of feces Obesity (morbid) Morbid obesity
Poverty	Lack Of Housing Inadequate Housing Inadequate material resources
Barriers to Access of Care	No Med Facility For Care No Med Facilities Necessary
Difficulty in Walking	Difficulty in walking Abnormality of gait
Fall	Fall On Stairs Or Steps Fall From Wheelchair